



# PERSONNEL TIE-OFF POINT

## INSTALLATION AND OPERATION INSTRUCTIONS

**Mailing Address:**  
P.O. Box 580697  
Tulsa, OK 74158-0697  
**Physical Address:**  
4707 N. Mingo Rd.  
Tulsa, OK 74117-5904

**Phone 1-800-777-2760**  
**Fax (918) 269-6688**  
<http://www.autocrane.com>

# WARNINGS

This instruction manual must be available to the user at all times. All users of this equipment must understand the instructions, operation, limitations and consequences of improper use of this equipment and be properly trained prior to use per OSHA 29 CFR 1910.66 and 1926.503 or applicable local standards.

Failure to follow warnings and instructions may result in serious personal injury or death.

Improperly assembled or damaged fall protection anchorage points and inappropriate use can result in injury or death.

Modifications to ANY of the items provided in this kit are prohibited. If any item becomes damaged or lost, contact Auto Crane for replacement parts only. The use of, or replacement with, non-approved parts may lead to injury or death.

This device meets testing regulations set forth in OSHA 1926.502.

This device is only intended for use as part of a fall protection system, including, but not limited to, a body harness, a fall arrest device, and a vertical lifeline/lanyard.

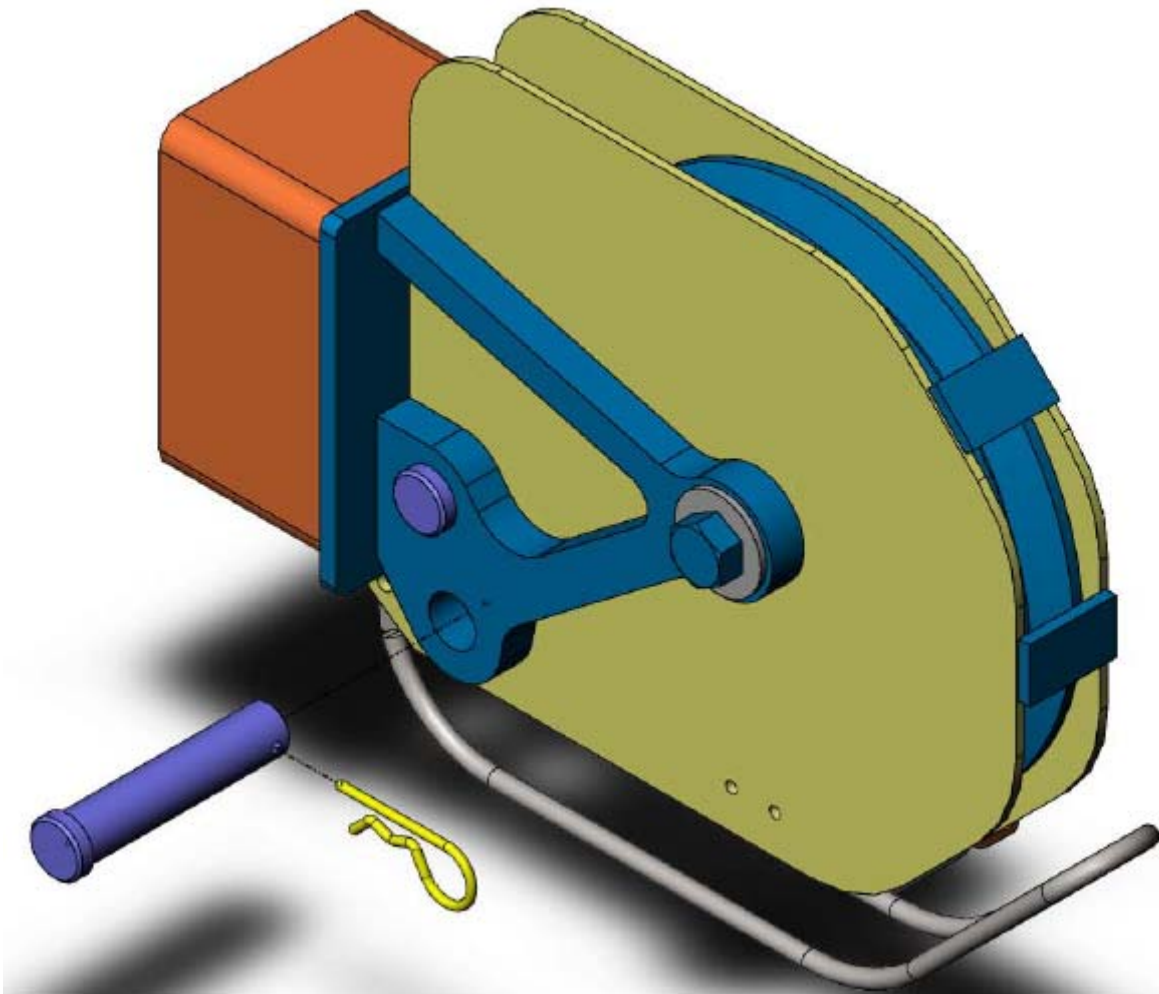
This kit is for use with Auto Crane hydraulic crane models 6406H, 8406H, HC-7, HC-8, and HC-9 ONLY.

This kit, nor any of its constituent parts, shall not be used for any other purpose other than that for which it was intended.

This kit, nor any of its constituent parts, shall not be used as part of a horizontal lifeline system.

# INSTALLATION

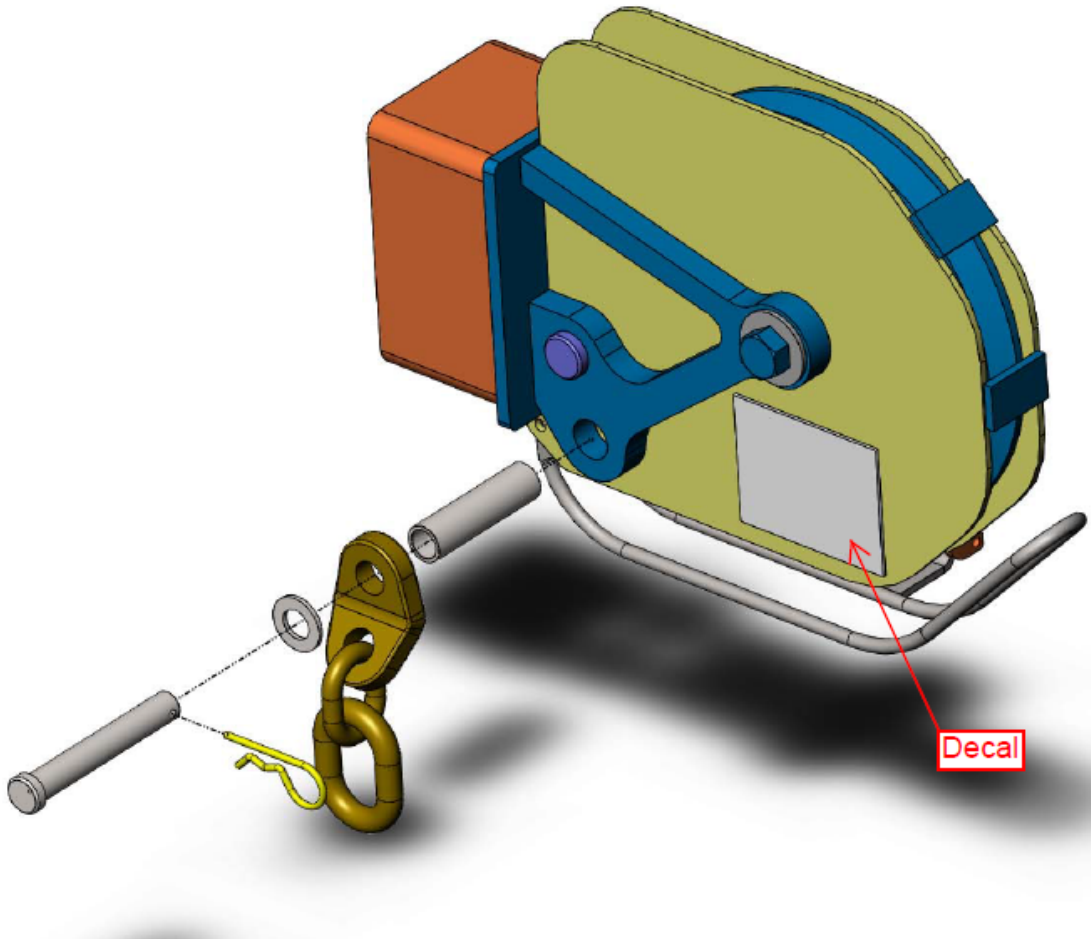
## REMOVAL OF EXISTING COMPONENTS



1. Move crane from rest, rotate and lower boom to allow for easier access to crown.
2. Remove traveling block and hook from crane.
3. Remove dead end pin from wire rope by removing hitch pin and pulling pin out of crown.

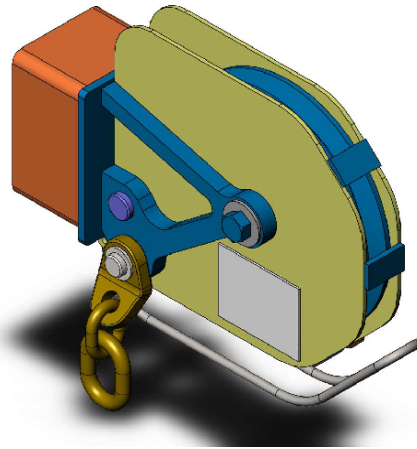
# INSTALLATION

## INSTALL NEW COMPONENTS



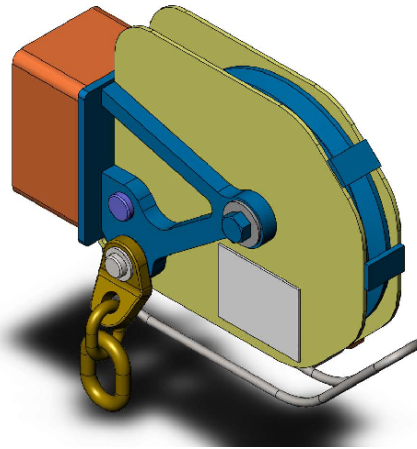
1. Install bushing into crown.
2. Place washer on pin against head of pin.
3. Place bracket on pin ensuring bracket is up against washer.
4. Insert pin, with washer and bracket, through bushing.
5. Secure pin in place with new hitch pin.
6. Attach decal supplied in kit as shown above.

# USAGE REQUIREMENTS



1. This Tie-Off Point is to be used only with ANSI/OSHA compliant personal fall arrest or restraint systems.
2. User **must** be trained in accordance with OSHA 29 CFR 1910.66 in the safe use of a personal fall arrest system and its components.
3. The user shall be equipped with a system to limit the maximum dynamic forces exerted on the user during the arrest of a fall to a maximum of 1,800 lbf (8 kN).
4. The items in this kit **must** be inspected prior to **each use** for wear, damage, and/or any other deterioration. If any items are found to be defective, system **must** be taken out of service in accordance with requirements of OSHA 29 CFR 1910.66 and 1926.502.
5. The fall protection system (including all components, swing fall, and calculating fall distance) must be formulated before using.
6. Under no circumstances is the Tie-Off Point to be used for lifting (personnel, inanimate loads, etc.).
7. A rescue plan, including means for implementation, must be in place that provides for the rapid rescue of the user in the event of a fall, or guarantees that the user is able to rescue him/herself.
8. Auto Crane recommends the hydraulic power to the crane to be turned off once crane is in position to avoid any accidental crane movement while the crane is being used in conjunction with the Tie Off Point.

## USAGE AND COMPATIBILITY LIMITATIONS



1. This Tie Off Point kit is design for a single user, with a capacity of up to 310 lbs. including tools, clothing, harness, etc.
2. The Tie Off Point must not be used in a corrosive environment.
3. Do not alter or modify any of the items included in the kit.
4. Do not use this equipment without proper training by a “competent person” as defined by OSHA 29 CFR 1926.32(f).
5. This kit shall not be used as part of a horizontal lifeline system.
6. Contact Auto Crane for any necessary replacement parts. **DO NOT** use unauthorized parts with this as severe injury, up to and including death, may occur.
7. When using Tie Off Point, ensure that the vehicle is on a level surface and that outriggers are fully deployed and the vehicle is stable per instructions found in Auto Crane crane manual.
8. When using Tie Off point, ensure that the crane is rated for a minimum of 5,000 lbs. in all positions in which it is used.
9. When crane is used as a Tie Off Point, hoist usage is prohibited.
10. Ensure usage of tie-off point is compliant with local, state and federal standards