

Auto Crane Company

9260 Broken Arrow Expressway
P.O. Box 470548 — Tulsa, Oklahoma 74147-0548
PHONE (918) 627-9475

OWNER'S MANUAL

8005H SERIES

Serial No. _____

8005H OWNER'S MANUAL

— CONTENTS —

	Page
1. INTRODUCTION — 8005H SERIES	1
2. INSTALLATION	5
3. MAINTENANCE	9
4. GENERAL ASSEMBLY	10
5. HOIST ACTUATOR	14
6. ROTATION GEAR BOX	17
7. ELECTRICAL SECTION	19
8. HYDRAULIC SECTION	21
9. RESERVOIR ASSEMBLY	24
10. GENERAL DIMENSIONS	31
11. OUTRIGGERS	33
12. WARRANTY	38



INTRODUCTION - 8005H SERIES

Auto Crane products have been engineered to provide safe, trouble-free, dependable service for many years when these products are properly used and maintained.

To assist you in obtaining the best service from your crane and to avoid untimely failure of the unit and/or the vehicle on which it is mounted, the following operating and service instructions are herein published, and it is specifically recommended that all operating and service personnel consider this manual as mandatory material for reading and study before operating or servicing Auto Crane products. It is highly recommended that crane owners, equipment managers and supervisors also read this manual.

Auto Crane has incorporated several safety features in the 8005H series for your protection. The material and electrical systems were designed to minimize weight and lengthen durability. The hydraulic components are designed for a 4:1 safety factor. Holding valves are installed to prevent the load from dropping if a hose should fail. A 10u filter is installed in the hydraulic system to remove dirt and grit that may cause premature failure. The reservoir is protected with a 15u filter in the filter cap.

For your convenience the overall dimensions of the 8005H series are included on the General Dimension Drawing. Rotation and turning radius are also listed. See page 31.

Remember that the crane adds weight to the vehicle and may change the driving and riding characteristics of the vehicle on which it is mounted unless this weight is properly provided for with appropriate overload springs. The payload of the vehicle is also reduced by the amount that the crane weighs, and as the vehicle is loaded, care should be exercised not to overload the vehicle. Exercising care in distributing the payload on the vehicle will greatly improve the driving and riding characteristics of the vehicle. A minimum G.V.W. of 14,500 lbs. is recommended for mounting the 8005H series cranes.

Auto Crane Company issues a limited warranty certificate with each unit sold. See last page for warranty policy.

It has always been Auto Crane Company policy to handle all warranty claims we receive as promptly as possible. If material or workmanship is involved, immediate corrective action is taken. It is therefore understandable that Auto Crane Company cannot assume responsibility or liability when our products have obviously been abused, mis-used,

overloaded or otherwise damaged by inexperienced persons trying to operate the equipment without even reading the manual. The Auto Crane is designed and built to be safe and efficient. Auto Crane will not assume responsibility or liability for any unit which has been modified, changed, or which has unauthorized or unapproved components installed.

Auto Crane Company maintains a crew of skilled and highly trained Service Personnel. The men in our Service Department are available to all of our customers throughout the continental limits of the United States. Many times a telephone conversation with a serviceman can solve a customer's equipment problem. When the serviceman makes a field trip, an accepted warranty claim trip is naturally paid by Auto Crane Company; however, our service rates are reasonable and, in most instances, the serviceman can repair a damaged unit on the spot, plus the Auto Crane Serviceman can train customer operators, maintenance and servicemen in the field. This training can alleviate a lot of customer expense due to inexperienced personnel, and most customers agree that the nominal service trip expense is well worth the cost because of the training benefits gained.

Auto Crane Company's extensive Research and Development Program assures our customers of the best equipment on the market, and our Engineering Staff, as well as our knowledgeable sales people are always available to our customers in solving crane and winch-type problems. When in doubt — call the Auto Crane factory.

DISTRIBUTOR ASSISTANCE:

Should you require any assistance not given in this manual, we recommend that you consult your nearest Auto Crane Distributor. Our distributors are stocked with authorized replacement parts and a service department that can solve almost any needed repair.

NOTE: THIS MANUAL SHOULD REMAIN WITH THE CRANE AT ALL TIMES.

The material herein does not imply to cover all maintenance, instructions, operations, or variations pertinent to every possible situation. If additional information is required, please refer to the Auto Crane Company at the following telephone number: 918 - 438-2760. The information contained in this manual was in effect at the time of printing. Auto Crane Company reserves the right to update this material at any time without prior notice or obligation.

- IMPORTANT -

SAFETY TIPS AND PRECAUTIONS

1. Make certain the vehicle meets minimum chassis requirements. (These requirements do not guarantee unit stability.)
2. Make certain the crane is installed per factory specifications. Contact your local Distributor or the Auto Crane factory if any questions arise.
3. Keep the vehicle in as level a position as possible while loading or unloading.
4. ALWAYS set the vehicle emergency brake before beginning crane operations.
5. ALWAYS use outriggers (jacklegs) from vehicle to the ground during crane operation. Insure that they are firmly positioned on solid footings.
6. All load ratings are based on crane capacity, NOT unit stability.
7. ALWAYS comply with load chart capacities (centerline of rotation to hoist hook).
8. NEVER OPERATE THE CRANE NEAR ELECTRICAL POWER LINES. Auto Crane Company recommends that a crane never be moved any closer to a power line (including telephone lines) than 20 feet at any point.
9. Keep objects and personnel clear of crane path during operation.
10. Keep hoist cable pulled tight at all times.
11. NEVER un-reel last wrap of cable from drum.
12. NEVER wrap cable around load.
13. REMEMBER — in lifting a heavy load, the weight can create enough tipping moment to overturn the vehicle.
14. NEVER attempt to lift or drag a load from the side — the boom can fail far below its rated capacity.
15. Oil gears as required.
16. A friction brake holds the load when power is off. This brake may need to be adjusted periodically. Never adjust the brake tighter than required to hold the load.
17. NEVER weld, modify, or use unauthorized components on any Auto Crane unit. This will void any warranty or liability. Also failure of the crane may result.
18. An important item which an operator should consider and use properly is the hoist hook. It should be checked on a 30-day basis for distortion or cracks.
19. NEVER place a chain link on the tip of the hook and try to lift a load with the hoist.
20. NEVER use a sling bar or anything larger than the hook throat which could prevent the hook from closing with the block, thus negating the safety feature.
21. In using a safety hook, ALWAYS insure that the hook throat is closed before lifting a load. Proper attention and common sense applied to the use of the hoist hook and various slings will prevent possible damage to material being hoisted and may prevent injury to personnel.
22. NEVER hold any pendant Select switch on that will negate safe operating conditions.
23. ALWAYS store outriggers (jacklegs) before road travel.

OPERATION OF UNIT

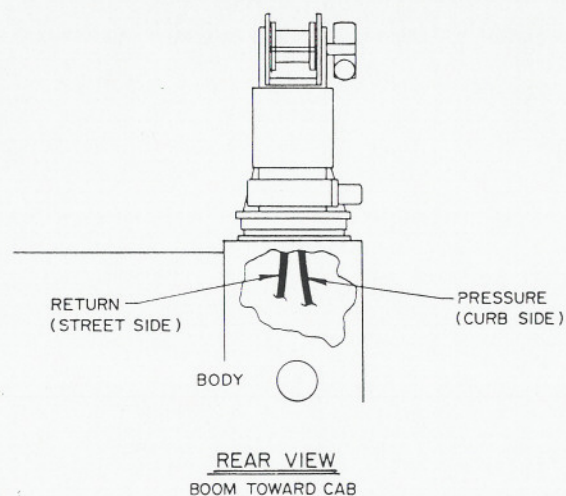
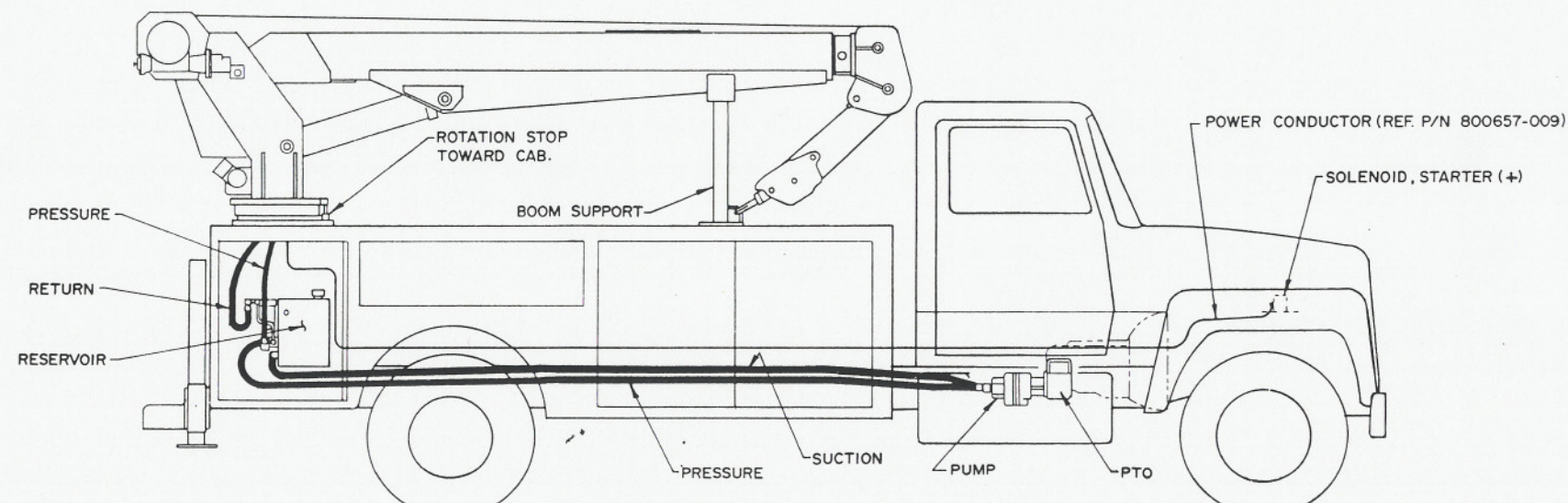
1. Make sure this manual has been thoroughly read by all crane operating personnel.
2. A routine inspection of the crane should be mandatory before each operating day. Any defects should be corrected immediately.
3. At a job site the vehicle should be positioned so that the crane can adequately reach the load within the rated capacity (centerline of rotation to hoist hook).
4. Keep the vehicle as level as possible during operation.
5. Engage emergency brake and turn ignition off with transmission left in gear or in park (for automatic transmissions). This is for Auto Crane units requiring only battery operation. For larger Auto Crane units requiring battery and hydraulic operation, engage emergency brake and place gear select in neutral; press clutch and pull PTO knob in gear; release clutch and set throttle control to proper RPM. (See hydraulic section.) **WARNING: DO NOT SET THROTTLE ABOVE REQUIRED SPEED – POSSIBLE DAMAGE MAY RESULT.**
6. Always use outriggers (jacklegs) from the truck to the ground. Be sure these are firm and adequately positioned.
7. Then, remove pendant control from cab (on smaller units) and plug into receptacle on crane. Crane is now ready for operation. On Auto Crane's larger units, remove pendant control from guard and unwrap cable from boom. Crane is now ready for operation.
8. Always boom up before rotating so that the boom will clear the required boom support.
9. When extending the boom always maintain clearance between the boom crown and the traveling block or hoist hook.
10. Always observe safe and practical operation to avoid possible accidents. Refer to Safety Tips and Precautions.
11. After completing lifting operations, return the boom to stowed position on the boom support. Avoid unneeded pressure on the boom support.
12. Store pendant control in proper location (in cab or on crane).
13. Return outriggers (jacklegs) to stowed position. Make sure they are pinned in place or jacklegs are returned to compartment.
14. Check work area for any tools or equipment not stored.
15. Press clutch and disengage PTO. Release throttle control and emergency brake.
16. Report any unusual occurrence during crane operation that may indicate required maintenance or repair.

MOUNTING AND INSTALLATION – 8005H

1. Vehicle should meet minimum GVW rating of 14,500.
 2. Make sure compartment or crane mount is adequately reinforced.
 3. A 13-1/2" Dia. hole should be cut out of mounting location (centered with mounting bolts. Ref: ENG 150, page 31) for access of lower ring gear bolts and hydraulic connections.
 4. Mounting bolts (015104 - Screw, Hx. 7/8 N.F. X 5" G5, 4 required) to be torqued to 440 ft.lbs. (dry).
 5. Power Conductor (P/N 800657-009, Drawing AW-017) to be uncoiled from bottom of crane and routed to positive pole on starter solenoid (REF. AW-017, page 5).
 6. REF: For the following instructions see Drawing AW-480150, page 24. Hydraulic hoses from reservoir to crane to be installed by customer at desired lengths. Hose P/N 551228-001 (size 8), Item 11. Reusable Fitting P/N 551227 (Size 10-8, 2 req'd for return line), Item 12 and Reusable Fitting P/N 360266 (Size 8-8, 2 req'd for pressure line), Item 23.
 7. Also to be installed by customer (at desired lengths) are the Pressure Hose (Item 13, P/N 360274-001, size 12) and Suction Hose (Item 14, P/N 360275-001, size 16) from the Reservoir to the Hydraulic Pump (REF: 480018, page 23). Reusable Fittings (Item 20, P/N 360269, size 10-12) and Hose Adapter (Item 21, P/N 360273) are used. -
- NOTE: If no pressure received at reservoir, alternate hose connections at pump.
8. When crane is not in operation, a boom support should always be used. Traveling block should be connected to hook loop. See illustration Drawing AW-017, page 5.
 9. Always use cable loops on boom and pendant guard to store pendant assembly.
 10. Crane should receive 8 G.P.M. at 2000 p.s.i.

FIXTURE NO.	FINISH NO.

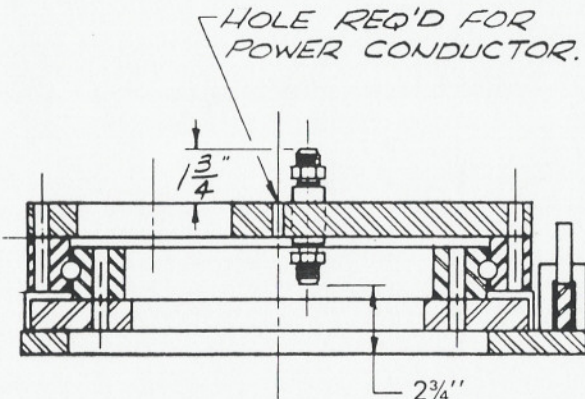
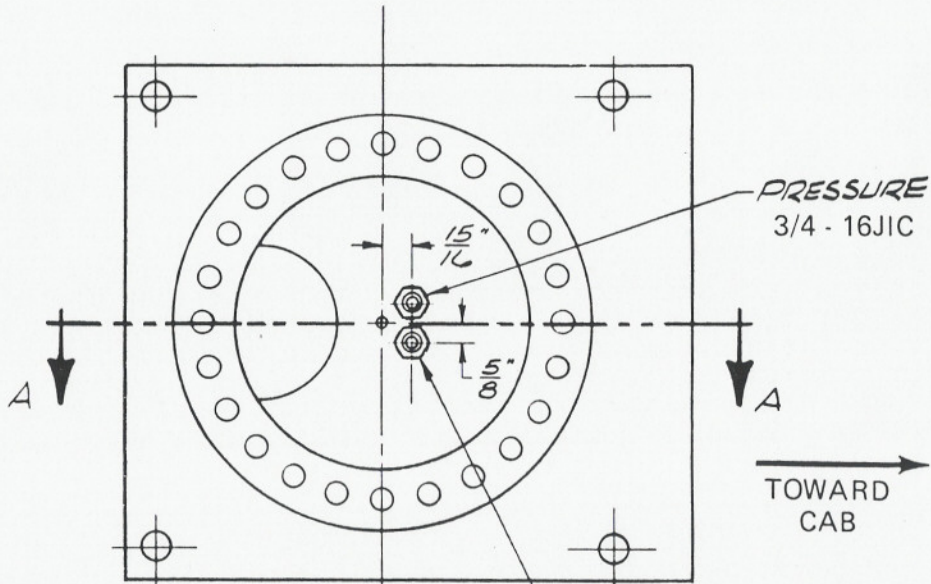
CHG	REVISIONS		
LTR	DESCRIPTION	DATE	APP'D



NOTES:

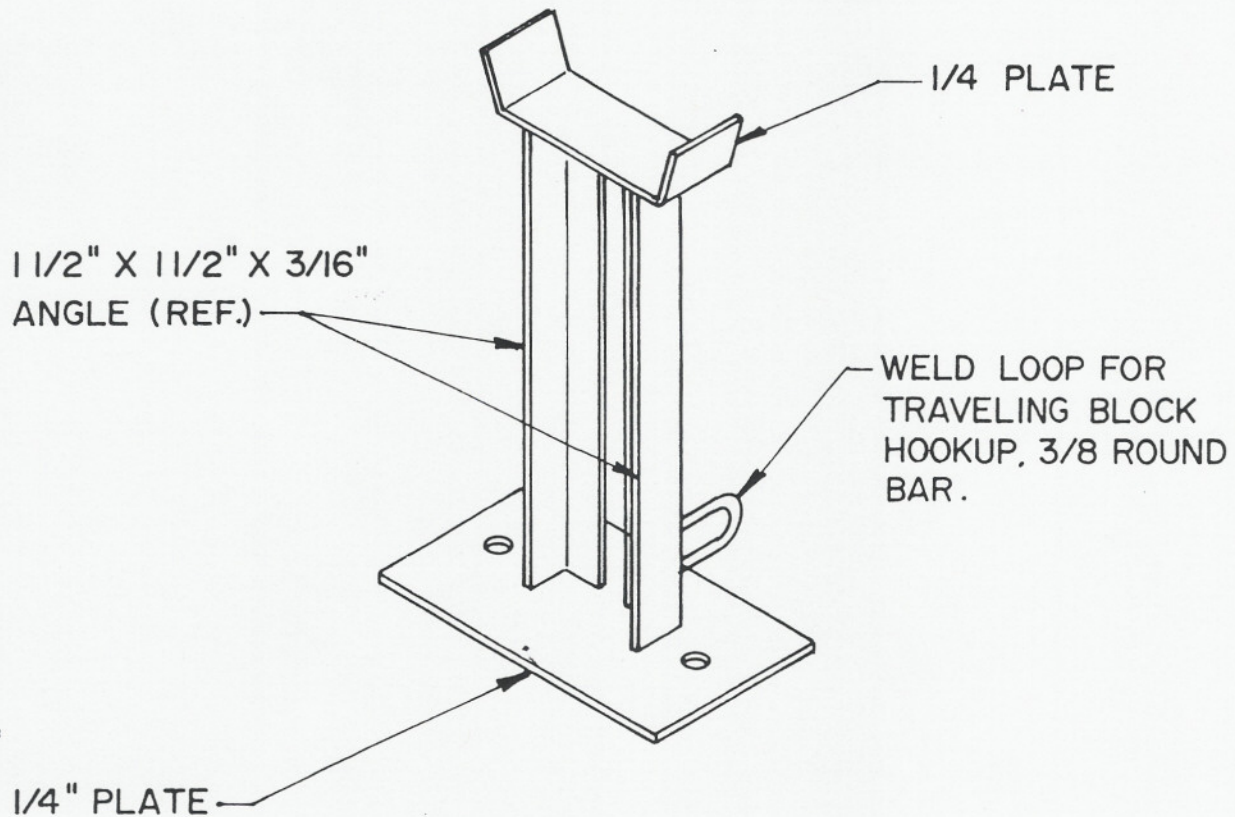
- SEE PAGE 4 FOR FURTHER INSTRUCTIONS.
- THE INSTALLATION ABOVE SHOWN IN SOLID LINE FORM FOR CLARITY.
- THE PRESSURE AND RETURN HOSES FROM THE RESERVOIR TO THE CRANE SHOULD BE AS LONG AS POSSIBLE TO ALLOW FOR ROTATION.

QUANTITY	ITEM	D/S	PART NO.	DESCRIPTION
LIST OF MATERIAL				
UNLESS OTHERWISE NOTED ALL DIMENSIONS ARE IN INCHES. TOLERANCES UNLESS OTHERWISE SPECIFIED:				
ANGLES ± 1/2° .XX ± .40				
FRACTIONAL ± 1/16 .XXX ± .010				
REMOVE ALL BURRS AND SHARP EDGES. DO NOT SCALE THIS DRAWING.				
TOLERANCES NOT SHOWN ABOVE ARE PER ANSI Y14.5 - 1973				
THIS PRINT IS THE PROPERTY OF AUTO CRANE CO. AND MUST NOT BE USED IN ANY MANNER DETRIMENTAL TO THEIR INTERESTS				
NEXT ASS'Y		DRAWN BY <i>Armstrong</i>		
		DATE 9-6-84		
		CHK'D BY		
		DATE		
		ENG. BY		
		DATE		
		SCALE		
		SIZE		
		DRAWING NO.		
		REVISION		
		WEIGHT		
		SHEET <u>1</u> OF <u>1</u>		

FIXTURE NO.	FINISH NO.	CHG LTR	REVISIONS DESCRIPTION	DATE	APP'D																																				
 <p style="text-align: center;"><u>SECTION "A-A"</u></p>		 <p style="text-align: center;"><u>BOTTOM VIEW</u></p>																																							
<p>UNLESS OTHERWISE NOTED ALL DIMENSIONS ARE IN INCHES. TOLERANCES UNLESS OTHERWISE SPECIFIED.</p> <p>ANGLES $\pm 1/2^\circ$.XX $\pm .40$</p> <p>FRACTIONAL $\pm 1/16$.XXX $\pm .010$</p> <p>REMOVE ALL BURRS AND SHARP EDGES. DO NOT SCALE THIS DRAWING.</p> <p>TOLERANCES NOT SHOWN ABOVE ARE PER ANSI Y14.5 - 1973</p> <p>THIS PRINT IS THE PROPERTY OF AUTO CRANE CO. AND MUST NOT BE USED IN ANY MANNER DETRIMENTAL TO THEIR INTERESTS.</p>		<table border="1" style="width: 100%; border-collapse: collapse;"> <thead> <tr> <th style="width: 10%;">ITEM</th> <th style="width: 10%;">D/S</th> <th style="width: 20%;">PART NO.</th> <th style="width: 60%;">DESCRIPTION</th> </tr> </thead> <tbody> <tr> <td colspan="4" style="text-align: center;">LIST OF MATERIAL</td> </tr> <tr> <td colspan="4" style="text-align: center;">AUTO CRANE COMPANY</td> </tr> <tr> <td colspan="4" style="text-align: center;">P.O. BOX 45548 • TULSA, OKLAHOMA 74145</td> </tr> <tr> <td colspan="4" style="text-align: center;">9260 BROKEN ARROW EXPRESSWAY • 918-627-9475</td> </tr> <tr> <td colspan="4" style="text-align: center;">TITLE BASE ASSEMBLY - 8005H</td> </tr> <tr> <td colspan="2">SCALE</td> <td>SIZE B</td> <td>DRAWING NO. AW-019</td> </tr> <tr> <td colspan="2">WEIGHT</td> <td colspan="2">REVISION</td> </tr> <tr> <td colspan="2">SHEET <u>1</u> OF <u>1</u></td> <td colspan="2"></td> </tr> </tbody> </table>				ITEM	D/S	PART NO.	DESCRIPTION	LIST OF MATERIAL				AUTO CRANE COMPANY				P.O. BOX 45548 • TULSA, OKLAHOMA 74145				9260 BROKEN ARROW EXPRESSWAY • 918-627-9475				TITLE BASE ASSEMBLY - 8005H				SCALE		SIZE B	DRAWING NO. AW-019	WEIGHT		REVISION		SHEET <u>1</u> OF <u>1</u>			
ITEM	D/S	PART NO.	DESCRIPTION																																						
LIST OF MATERIAL																																									
AUTO CRANE COMPANY																																									
P.O. BOX 45548 • TULSA, OKLAHOMA 74145																																									
9260 BROKEN ARROW EXPRESSWAY • 918-627-9475																																									
TITLE BASE ASSEMBLY - 8005H																																									
SCALE		SIZE B	DRAWING NO. AW-019																																						
WEIGHT		REVISION																																							
SHEET <u>1</u> OF <u>1</u>																																									

AUTO CRANE'S SUGGESTED BOOM SUPPORT

LEAVE $\frac{3}{4}$ " CLEARANCE ON EACH SIDE OF BOOM.



BOOM SUPPORT IS REQUIRED.

AUTO CRANE COMPANY

P.O. BOX 45548 • TULSA, OKLAHOMA 74145
9260 BROKEN ARROW EXPRESSWAY • 918-627-9475

WIRE LINE LUBRICATION

Lubrication of the wire line serves two important purposes: (1) helps to prevent corrosion; (2) lubricates the cable strands to reduce wear due to flexing and abrasion caused by contact with the sheaves, rollers and cable on the drum.

PREPARATION:

Remove rust and foreign matter with a wire brush and wipe clean. Be sure cable is dry.

APPLICATION:

Two methods are illustrated in figures 1 and 2. A light weight motor oil may be used, as in figure 1; or a heavier lubricant such as grease gun lubricant, as in figure 2.

Illustrated in figure 1 is one easy and effective method of applying lubrication. Dip the brush into the lubricant and apply. In some cases a rag or piece of sheepskin is dipped in the lubricant and used to swab the lubricant on to the rope.

Another simple method is shown in figure 2. Leather gloves are preferred to canvas because of greater protection and less penetration of the grease.



Fig. 1

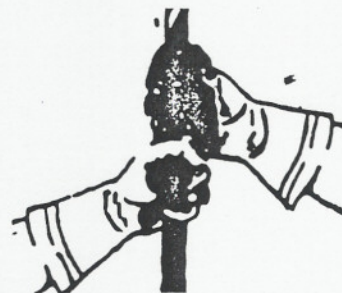


Fig. 2

"LIFE OF WIRE LINE"

So many variable factors can cause the deterioration of wire line cable that it is not possible to determine a definite life expectancy.

Some of these factors are:

1. Load being handled.
2. Corrosive conditions.
3. Maintenance of the unit.
 - a. Keep the sheaves turning freely.
 - b. Maintain tension on cable to insure proper spooling.
 - c. Lubricate line. (See above)
 - d. Avoid kinks in cable.
 - e. Avoid abrasive action and contact with sharp corners.
4. Frequency of use.

Auto Crane units, with 8000 pound ratings, use 3/8 inch diameter galvanized preformed 7 x 19 aircraft cable which, when new, has a minimum strength of 14,400 pounds. It is recommended when 4,000 pound loads are exceeded to use a two-part line with a traveling block. It can be seen that there is a safety factor of 3.6 to 1 when the cable is new.

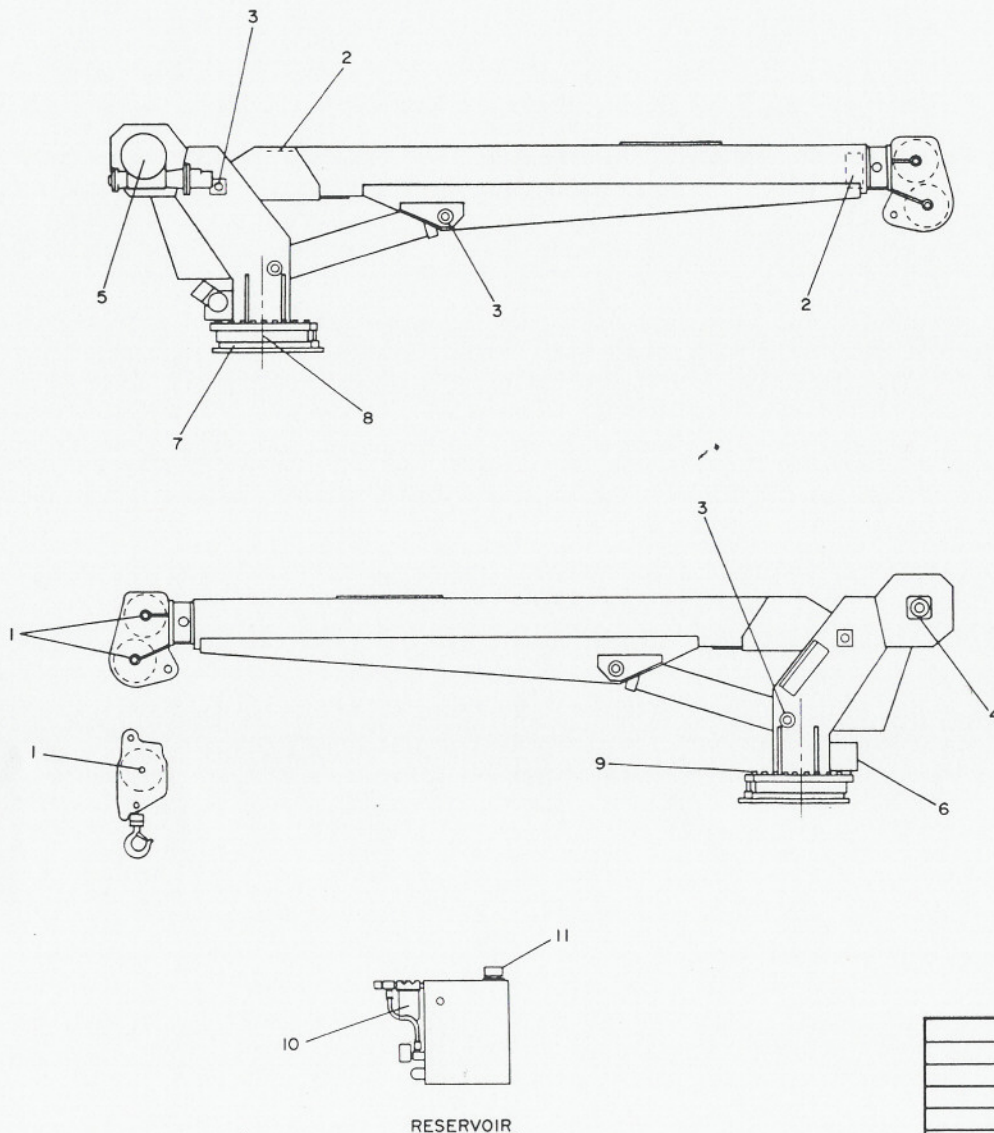
Keeping the above factor of safety in mind and knowing the kind of loads that will be handled, the user can determine by inspection of the cable as to when it should be replaced.

Items to look for while inspecting the cables are:

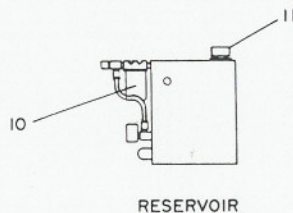
1. Broken strands.
2. Kinks and flattened sections.
3. Corrosion and abrasion.

FIXTURE NO.	FINISH NO.

CHG LTR	REVISIONS		DATE	APP'D
	DESCRIPTION			



1. SHEAVE ROLLER BEARINGS: SEALED TYPE. NO LUBE REQUIRED.
2. BOOM PADS: IF REPLACED, GREASE UPON INSTALLATION USE CHASSIS LUBRICANT.
3. GREASE ZERK: PIVOT POINTS, LUBE ONCE A WEEK. USE MOBILPLEX EP-2 OR EQUIVALENT.
(CYLINDER CROSSTUBE @ BOOM)
(CYLINDER CROSSTUBE @ PEDESTAL)
(BOOM PIVOT)
4. HOIST ROLLER BEARINGS: SEALED TYPE. NO LUBE REQUIRED.
5. HOIST ACTUATOR: MAINTAIN LUBE AT PLUG. USE EXTREME PRESSURE GEAR LUBE (E.P. 80-90). SPUR GEAR TO USE 30 WT. OIL. REPLACE LUBE EVERY SIX MONTHS.
6. ROTATION GEAR BOX: PACK GREASE THRU COVER AS REQUIRED TO MAINTAIN 5 LBS. (EPO-901 MULTIFAK OR EQUIVALENT).
7. RING GEAR: LUBE EVERY 3 MONTHS AT PINION. USE MOBILTAC LL OR EQUIVALENT.
8. RING GEAR RACE: LUBE EVERY 3 MONTHS AT ZERK. USE MOBILPLEX EP-2 OR EQUIVALENT.
9. BOLTS: RING GEAR - PEDESTAL BASE. REQUIRED TORQUE OF BOLTS IF REPLACED - 150#LBS. HARDENED WASHERS REQUIRED.
NOTE: BOLTS SHOULD BE CHECKED PERIODICALLY AND RETIGHTENED TO PROPER TORQUE. THE POSSIBILITY EXISTS THAT DUE TO THE STRESSES APPLIED TO THE ROTATION SYSTEM, THE BOLTS COULD WORK LOOSE.
10. RESERVOIR FILTER: 10 MICRON SPIN ON FILTER REQUIRED. REPLACE EVERY 3 MONTHS.
11. HYDRAULIC FLUID: USE DTE-13 OR EQUAL TO KEEP LEVEL AT SIGHT GAUGE. RESERVOIR SHOULD BE FLUSHED AND NEW FLUID ADDED EVERY 2 YEARS OR IF A HYDRAULIC FAILURE OCCURS.

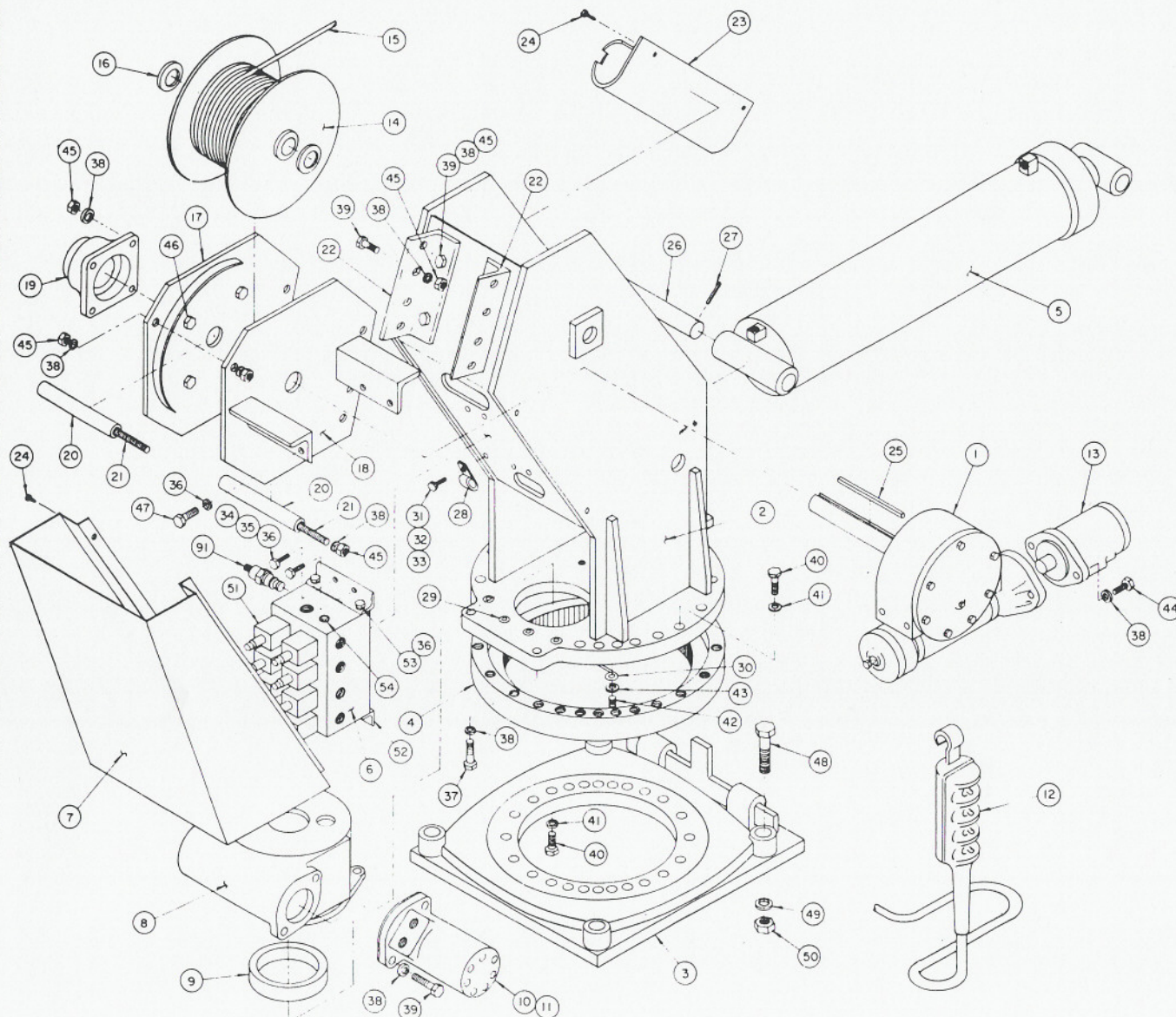


RESERVOIR

		ITEM	D/S	PART NO.	DESCRIPTION	
QUANTITY		LIST OF MATERIAL				
UNLESS OTHERWISE NOTED ALL DIMENSIONS ARE IN INCHES. TOLERANCES UNLESS OTHERWISE SPECIFIED: ANGLES ± 1/2° .XX ± .40 FRACTIONAL ± 1/16 .XXX ± .010 REMOVE ALL BURRS AND SHARP EDGES. DO NOT SCALE THIS DRAWING. TOLERANCES NOT SHOWN ABOVE ARE PER ANSI Y14.5 - 1973 THIS PRINT IS THE PROPERTY OF AUTO CRANE CO. AND MUST NOT BE USED IN ANY MANNER DETRIMENTAL TO THEIR INTERESTS.		DRAWN BY JOHN STRONG		AUTO CRANE COMPANY P.O. BOX 45548 • TULSA, OKLAHOMA 74145 926J BROKEN ARROW EXPRESSWAY • 918-627-9475		
		DATE 7-5-84				
		CHK'D BY		TITLE		
		DATE		LUBRICATION - MAINTENANCE 8005H		
		ENG. BY				
		DATE		SCALE ~	SIZE C	DRAWING NO. AW-015
NEXT ASS'Y		WEIGHT		SHEET 1 OF 1		

PICTURE NO.	FINISH NO.

CHG	REVISIONS	DATE	APPD
LTR	DESCRIPTION		



NOTES:

1. SEE SHEET 2 OF 2 FOR BOOM ASSEMBLY.
2. SEE AW-480095 FOR ELECTRICAL ASSEMBLY.
3. SEE AW-480180 FOR HYDRAULIC ASSEMBLY.
4. SEE AW-480096 FOR PENDANT ASSEMBLY.
5. SEE AW-480021 FOR DECAL KIT.

QUANTITY	ITEM D/S	PART NO.	DESCRIPTION
LIST OF MATERIAL			
UNLESS OTHERWISE NOTED ALL DIMENSIONS ARE IN INCHES			
TOLERANCES UNLESS OTHERWISE SPECIFIED			
ANGLES - 1°	XX ± .40		
FRACTIONAL - 5/16	XX ± .010		
REMOVE ALL BURRS AND SHARP EDGES DO NOT SCALE TH-S			
DRAWING TOLERANCES NOT SHOWN ABOVE ARE PER AND T14.5-1973			
THIS PRINT IS THE PROPERTY OF AUTO CRANE CO AND MUST NOT BE USED IN ANY MANNER DETRIMENTAL TO THEIR INTERESTS			
NEXT ASSY			

AUTO CRANE COMPANY

P.O. BOX 4548 • TULSA, OKLAHOMA 74116

8280 BROKEN ARROW EXPRESSWAY • 918-621-8475

GENERAL ASSEMBLY - 8005H

SCALE: 1/2" = 1' D

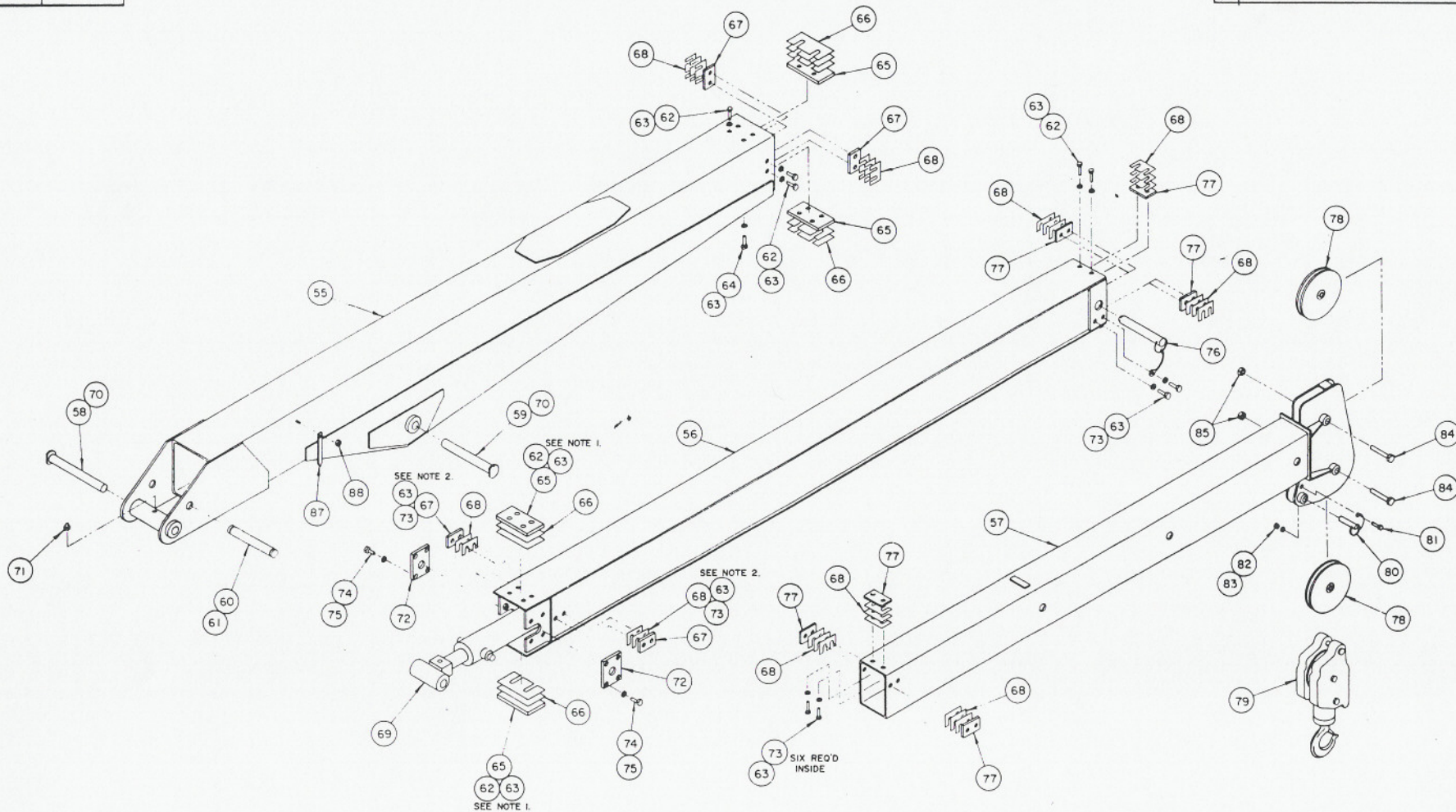
WEIGHT: 100 LBS

REVISION: 1

SHEET 1 OF 2

FIGURE NO.	FINISH NO.

CHG	REVISIONS	DATE	APPD
LTR	DESCRIPTION		



NOTES:

1. ITEMS 62 AND 63 - 4 REQ'D INSIDE OF BOOM.
2. ITEMS 63 AND 73 - 2 REQ'D INSIDE OF BOOM.

QUANTITY		ITEM	D/S	PART NO.	DESCRIPTION
UNLESS OTHERWISE NOTED ALL DIMENSIONS ARE IN INCHES. TOLERANCES UNLESS OTHERWISE SPECIFIED:					
DRAWN BY		DATE			
CHK'D BY		DATE			
DATE		DATE			
END BY		DATE			
TOLERANCES NOT SHOWN ABOVE ARE PER ANSI Y14.5-1991		DATE			
THIS PRINT IS THE PROPERTY OF AUTO CRANE CO. AND MUST NOT BE USED IN ANY MANNER DETRIMENTAL TO THEIR INTERESTS.		DATE			
NEXT ASSY		DATE			

LIST OF MATERIAL					
AUTO CRANE COMPANY					
P.O. BOX 45548 • TULSA, OKLAHOMA 74145					
9200 BROKEN ARROW EXPRESSWAY • 918-837-9435					
TITLE					
GENERAL ASSEMBLY - 8005H					
SCALE	SIZE	DRAWING NO.	REVISION	SHEET	
~	D	AW-480000	1	2	2

GENERAL ASSEMBLY 8005H - AW-480000

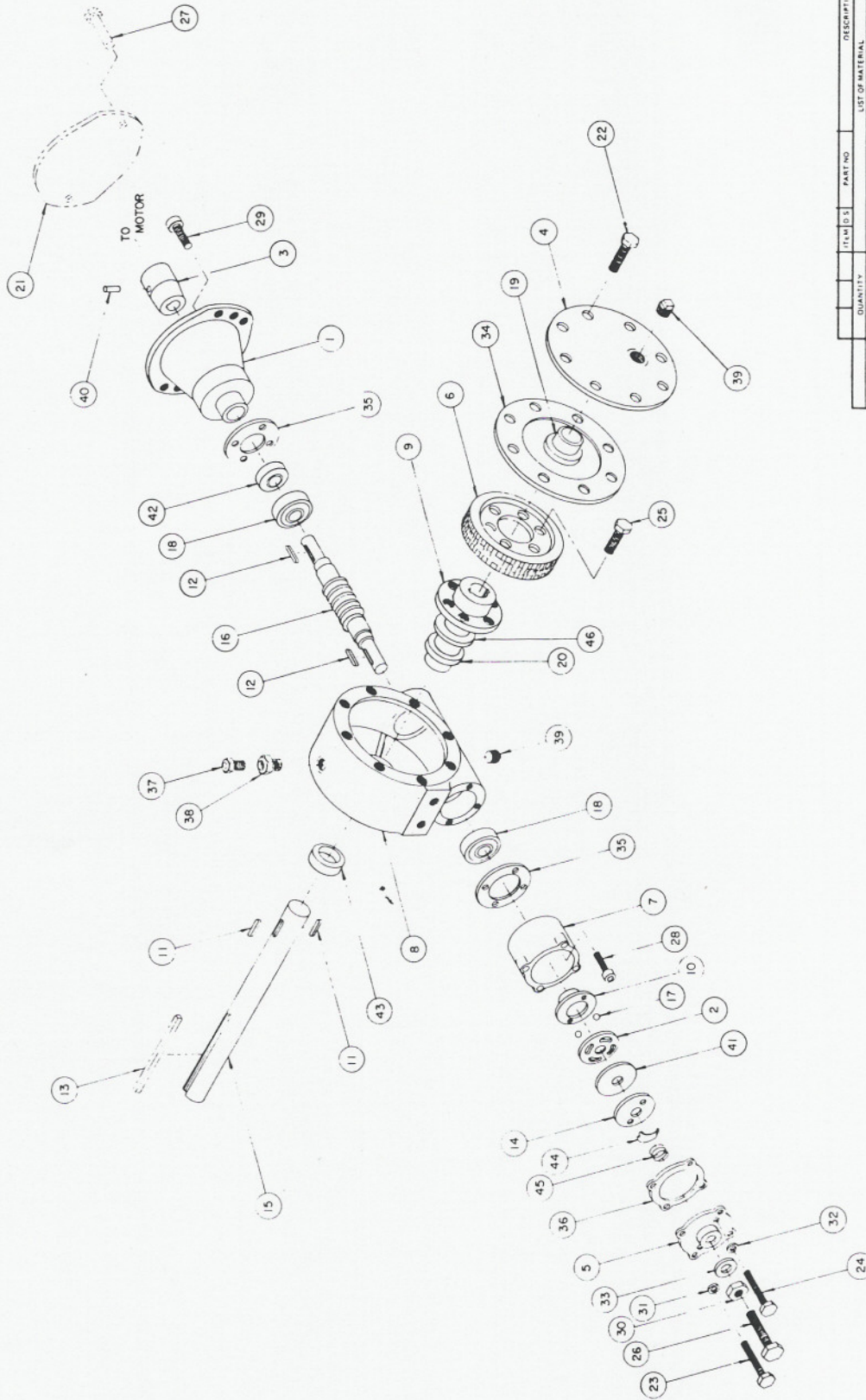
ITEM	QTY.	PART NO.	DESCRIPTION
1	1	480075	ACTUATOR, HOIST
2	1	480050	PEDESTAL WELDMENT ASS'Y
3	1	480040	BASE PLATE ASSEMBLY
4	1	360163	BEARING, ROTATION
5	1	480016	CYLINDER, BOOM
6	1	480182	MANIFOLD, CARTRIDGE
7	1	480160	COVER, VALVE
8	1	480028	GEAR BOX, ROTATION
9	1	360162	RING, ECCENTRIC
10	1	480027	MOTOR, HYD. (ROTATION)
11	1	480019	GASKET, MOTOR
12	1	480096	PENDANT ASSEMBLY
13	1	480076	MOTOR, HYD. (HOIST)
14	1	480066	DRUM, HOIST
15	1	480031	CABLE ASSEMBLY (3/8")
16	2	480073	SPACER, WINCH SHAFT
17	1	480064	SIDE PLATE - LEFT
18	1	480062	SIDE PLATE - RIGHT
19	1	480077	BEARING, 4-BOLT
20	2	480069	SPACER, TUBE
21	2	480070	ROD, SPACER
22	2	480072	BRACKET, MOUNTING
23	1	634000	GUARD, PENDANT
24	6	002615	SCREW, 1/4-20 X 3/8 S.T.
25	1	800321-001	KEY, SQ. 3/8 X 6-1/4" LG.
26	1	480127	PIN, PEDESTAL/CYLINDER
27	1	360123	PIN, SPRING
28	1	480024	MOUNT, PENDANT RETAINER
29	4	006205	SCREW, SC. HD. 5/8NC X 1-1/4 G5
30	1	360207	RETAINER, ECCENTRIC RING
31	1	005500	SCREW, HX.HD. 1/4NC X 3/4 LG.
32	1	015900	NUT, HX. 1/4 NC
33	1	020200	WASHER, SP.LK. 1/4 C.P.
34	4	008701	SCREW, HX.HD. 3/8 NC X 1" LG.
35	4	017100	NUT, HX. 3/8 NC CP
36	8	021100	WASHER, SP. LK. 3/8 CP
37	4	011608	SCREW, HX.HD. 1/2NC X 2" LG. G5
38	6	021500	WASHER, SP.LK. 1/2 CP
39	14	010201	BOLT, HX. 1/2 NC X 1-1/2" LG. G5
40	38	012199	SCREW, HX.HD. 5/8 NC X 1-3/4" LG. G5
41	38	023902	WASHER, FL. 5/8 HARDENED
42	1	007402	SCREW, HX.HD. 5/16 NC X 5/8" LG. G5
43	5	020600	WASHER, SP.LK. 5/16
44	2	012197	SCREW, SC.HD. 1/2 NC X 1-1/2" G5
45	20	017701	NUT, HX. 1/2 NC CP
46	4	011605	SCREW, HX. HD. 1/2 NC X 1-3/4" G5
47	4	008601	SCREW, HX.HD. 3/8 NC X 7/8" G5
48	4	015104	SCREW, HX.HD. 7/8 NF X 5" G5
49	4	022200	WASHER, SP.LK. 7/8
50	4	018900	NUT, HX. 7/8 NF
51	8	480184	VALVE, CARTRIDGE
52	2	480045	BRACKET, MANIFOLD
53	4	008400	SCREW, HX.HD. 3/8 NC X 3/4" LG.
54	1	000109	PLUG, PIPE 3/8

GENERAL ASSEMBLY 8005H – AW-480000

ITEM	QTY.	PART NO.	DESCRIPTION
55	1	480080	BOOM, LOWER
56	1	480100	BOOM, POWER
57	1	480110	BOOM, MANUAL
58	1	480125	PIN, PEDESTAL/BOOM
59	1	480123	PIN, BOOM/CYLINDER
60	1	480129	PIN, EXT. CYLINDER
61	2	480029	RING, RETAINING
62	18	005102	SCREW, HX.HD. 1/4 NF X 5/8" LG. CP
63	36	020200	WASHER, SP.LK. 1/4 CP
64	4	005501	SCREW, HX.HD. 1/4 NF X 3/4" LG. CP
65	4	480032	PAD, BOOM (LARGE)
66	As Req'd	480033	SHIM, LARGE (.032 THICK)
67	4	480036	PAD, BOOM (SMALL)
68	As Req'd	480037	SHIM, SMALL (.032 THICK)
69	1	480015	CYLINDER, EXTENSION
70	2	360123	PIN, SPRING
71	1	239000	ZERK, GREASE
72	2	480105	RETAINER, EXT. CYLINDER
73	14	005406	SCREW, HX. HD. 1/4 NF X 1/2" LG. CP
74	8	010201	SCREW, HX. HD. 1/2 NC X 1-1/2" LG. G5
75	8	021500	WASHER, SP.LK. 1/2 CP
76	1	480030	PIN, MANUAL BOOM
77	6	480120	PAD (STEEL)
78	2	480133	SHEAVE ASSEMBLY (Ref. Bearing P/N 240234)
79	1	480140	BLOCK, SWIVEL
80	1	201101	PIN, CROWN
81	1	008100	SCREW, HX.HD. 3/8 NF X 5/8" LG. CP
82	1	017102	NUT, HX. 3/8 NF CP
83	1	021100	WASHER, SP.LK. 3/8 CP
84	2	011506	SCREW, HX.HD. 1/2 NF X 3-1/2" LG. G5
85	2	017800	NUT, HX.LK. 1/2 NF CP
86	2	480121	SPACER .
87	2	360038	INDICATOR, ANGLE
88	2	016300	NUT, HX.LK. 1/4 NC
89	1	480021	KIT, DECAL
90	1	480020	KIT, SHIP LOOSE
91	1	480183	CARTRIDGE, FLOW REGULATOR
92	1	480012	SEAL KIT (For 480015 - Ext. Cyl.)
93	1	480013	SEAL KIT (For 480016 - Boom Cyl.)

CHC	LTA	REVISIONS		DATE	APP'D
		DESCRIPTION			

FIXTURE NO.	FINISH NO.
-------------	------------



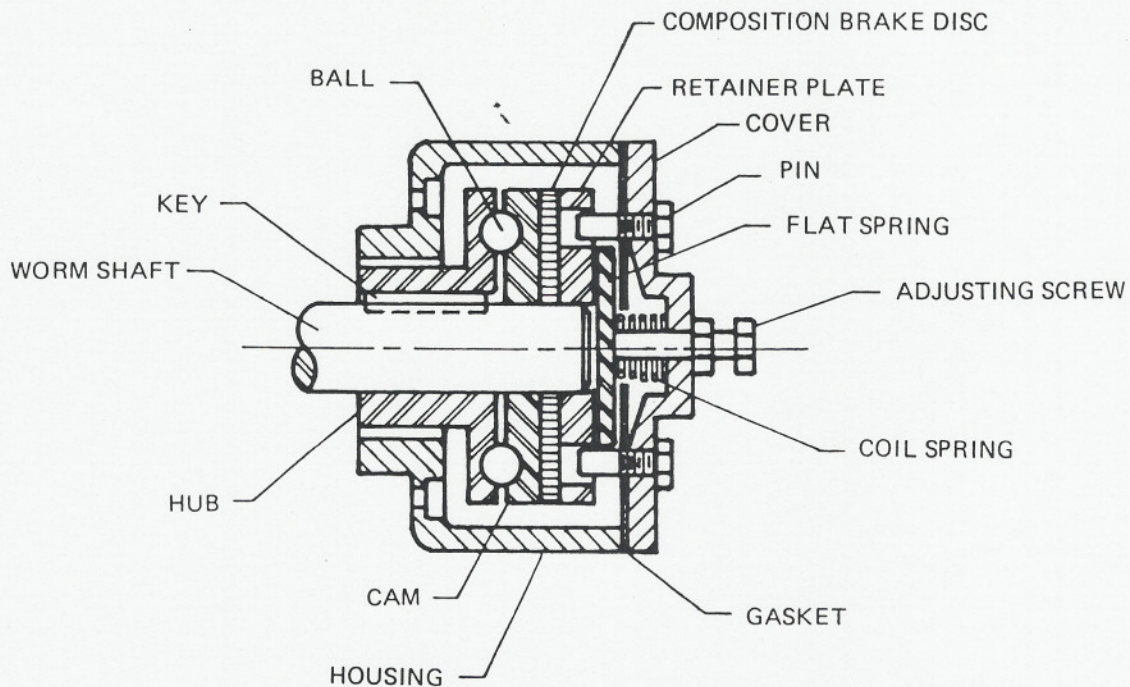
QUANTITY	ITEM	D.S.	PART NO.	DESCRIPTION
UNLESS OTHERWISE NOTED ALL DIMENSIONS ARE IN INCHES				
SPECIFIED DIMENSIONS ARE IN INCHES				
ANGLES: 1" = 1/8" 1/4" = 3/8" 3/8" = 1/2" 1/2" = 3/4" 3/4" = 1" 1" = 1 1/4" 1 1/4" = 1 3/4" 1 3/4" = 2" 2" = 2 1/4" 2 1/4" = 2 3/4" 2 3/4" = 3" 3" = 3 1/4" 3 1/4" = 3 3/4" 3 3/4" = 4" 4" = 4 1/4" 4 1/4" = 4 3/4" 4 3/4" = 5" 5" = 5 1/4" 5 1/4" = 5 3/4" 5 3/4" = 6" 6" = 6 1/4" 6 1/4" = 6 3/4" 6 3/4" = 7" 7" = 7 1/4" 7 1/4" = 7 3/4" 7 3/4" = 8" 8" = 8 1/4" 8 1/4" = 8 3/4" 8 3/4" = 9" 9" = 9 1/4" 9 1/4" = 9 3/4" 9 3/4" = 10" 10" = 10 1/4" 10 1/4" = 10 3/4" 10 3/4" = 11" 11" = 11 1/4" 11 1/4" = 11 3/4" 11 3/4" = 12" 12" = 12 1/4" 12 1/4" = 12 3/4" 12 3/4" = 13" 13" = 13 1/4" 13 1/4" = 13 3/4" 13 3/4" = 14" 14" = 14 1/4" 14 1/4" = 14 3/4" 14 3/4" = 15" 15" = 15 1/4" 15 1/4" = 15 3/4" 15 3/4" = 16" 16" = 16 1/4" 16 1/4" = 16 3/4" 16 3/4" = 17" 17" = 17 1/4" 17 1/4" = 17 3/4" 17 3/4" = 18" 18" = 18 1/4" 18 1/4" = 18 3/4" 18 3/4" = 19" 19" = 19 1/4" 19 1/4" = 19 3/4" 19 3/4" = 20" 20" = 20 1/4" 20 1/4" = 20 3/4" 20 3/4" = 21" 21" = 21 1/4" 21 1/4" = 21 3/4" 21 3/4" = 22" 22" = 22 1/4" 22 1/4" = 22 3/4" 22 3/4" = 23" 23" = 23 1/4" 23 1/4" = 23 3/4" 23 3/4" = 24" 24" = 24 1/4" 24 1/4" = 24 3/4" 24 3/4" = 25" 25" = 25 1/4" 25 1/4" = 25 3/4" 25 3/4" = 26" 26" = 26 1/4" 26 1/4" = 26 3/4" 26 3/4" = 27" 27" = 27 1/4" 27 1/4" = 27 3/4" 27 3/4" = 28" 28" = 28 1/4" 28 1/4" = 28 3/4" 28 3/4" = 29" 29" = 29 1/4" 29 1/4" = 29 3/4" 29 3/4" = 30" 30" = 30 1/4" 30 1/4" = 30 3/4" 30 3/4" = 31" 31" = 31 1/4" 31 1/4" = 31 3/4" 31 3/4" = 32" 32" = 32 1/4" 32 1/4" = 32 3/4" 32 3/4" = 33" 33" = 33 1/4" 33 1/4" = 33 3/4" 33 3/4" = 34" 34" = 34 1/4" 34 1/4" = 34 3/4" 34 3/4" = 35" 35" = 35 1/4" 35 1/4" = 35 3/4" 35 3/4" = 36" 36" = 36 1/4" 36 1/4" = 36 3/4" 36 3/4" = 37" 37" = 37 1/4" 37 1/4" = 37 3/4" 37 3/4" = 38" 38" = 38 1/4" 38 1/4" = 38 3/4" 38 3/4" = 39" 39" = 39 1/4" 39 1/4" = 39 3/4" 39 3/4" = 40" 40" = 40 1/4" 40 1/4" = 40 3/4" 40 3/4" = 41" 41" = 41 1/4" 41 1/4" = 41 3/4" 41 3/4" = 42" 42" = 42 1/4" 42 1/4" = 42 3/4" 42 3/4" = 43" 43" = 43 1/4" 43 1/4" = 43 3/4" 43 3/4" = 44" 44" = 44 1/4" 44 1/4" = 44 3/4" 44 3/4" = 45" 45" = 45 1/4" 45 1/4" = 45 3/4" 45 3/4" = 46" 46" = 46 1/4" 46 1/4" = 46 3/4" 46 3/4" = 47" 47" = 47 1/4" 47 1/4" = 47 3/4" 47 3/4" = 48" 48" = 48 1/4" 48 1/4" = 48 3/4" 48 3/4" = 49" 49" = 49 1/4" 49 1/4" = 49 3/4" 49 3/4" = 50" 50" = 50 1/4" 50 1/4" = 50 3/4" 50 3/4" = 51" 51" = 51 1/4" 51 1/4" = 51 3/4" 51 3/4" = 52" 52" = 52 1/4" 52 1/4" = 52 3/4" 52 3/4" = 53" 53" = 53 1/4" 53 1/4" = 53 3/4" 53 3/4" = 54" 54" = 54 1/4" 54 1/4" = 54 3/4" 54 3/4" = 55" 55" = 55 1/4" 55 1/4" = 55 3/4" 55 3/4" = 56" 56" = 56 1/4" 56 1/4" = 56 3/4" 56 3/4" = 57" 57" = 57 1/4" 57 1/4" = 57 3/4" 57 3/4" = 58" 58" = 58 1/4" 58 1/4" = 58 3/4" 58 3/4" = 59" 59" = 59 1/4" 59 1/4" = 59 3/4" 59 3/4" = 60" 60" = 60 1/4" 60 1/4" = 60 3/4" 60 3/4" = 61" 61" = 61 1/4" 61 1/4" = 61 3/4" 61 3/4" = 62" 62" = 62 1/4" 62 1/4" = 62 3/4" 62 3/4" = 63" 63" = 63 1/4" 63 1/4" = 63 3/4" 63 3/4" = 64" 64" = 64 1/4" 64 1/4" = 64 3/4" 64 3/4" = 65" 65" = 65 1/4" 65 1/4" = 65 3/4" 65 3/4" = 66" 66" = 66 1/4" 66 1/4" = 66 3/4" 66 3/4" = 67" 67" = 67 1/4" 67 1/4" = 67 3/4" 67 3/4" = 68" 68" = 68 1/4" 68 1/4" = 68 3/4" 68 3/4" = 69" 69" = 69 1/4" 69 1/4" = 69 3/4" 69 3/4" = 70" 70" = 70 1/4" 70 1/4" = 70 3/4" 70 3/4" = 71" 71" = 71 1/4" 71 1/4" = 71 3/4" 71 3/4" = 72" 72" = 72 1/4" 72 1/4" = 72 3/4" 72 3/4" = 73" 73" = 73 1/4" 73 1/4" = 73 3/4" 73 3/4" = 74" 74" = 74 1/4" 74 1/4" = 74 3/4" 74 3/4" = 75" 75" = 75 1/4" 75 1/4" = 75 3/4" 75 3/4" = 76" 76" = 76 1/4" 76 1/4" = 76 3/4" 76 3/4" = 77" 77" = 77 1/4" 77 1/4" = 77 3/4" 77 3/4" = 78" 78" = 78 1/4" 78 1/4" = 78 3/4" 78 3/4" = 79" 79" = 79 1/4" 79 1/4" = 79 3/4" 79 3/4" = 80" 80" = 80 1/4" 80 1/4" = 80 3/4" 80 3/4" = 81" 81" = 81 1/4" 81 1/4" = 81 3/4" 81 3/4" = 82" 82" = 82 1/4" 82 1/4" = 82 3/4" 82 3/4" = 83" 83" = 83 1/4" 83 1/4" = 83 3/4" 83 3/4" = 84" 84" = 84 1/4" 84 1/4" = 84 3/4" 84 3/4" = 85" 85" = 85 1/4" 85 1/4" = 85 3/4" 85 3/4" = 86" 86" = 86 1/4" 86 1/4" = 86 3/4" 86 3/4" = 87" 87" = 87 1/4" 87 1/4" = 87 3/4" 87 3/4" = 88" 88" = 88 1/4" 88 1/4" = 88 3/4" 88 3/4" = 89" 89" = 89 1/4" 89 1/4" = 89 3/4" 89 3/4" = 90" 90" = 90 1/4" 90 1/4" = 90 3/4" 90 3/4" = 91" 91" = 91 1/4" 91 1/4" = 91 3/4" 91 3/4" = 92" 92" = 92 1/4" 92 1/4" = 92 3/4" 92 3/4" = 93" 93" = 93 1/4" 93 1/4" = 93 3/4" 93 3/4" = 94" 94" = 94 1/4" 94 1/4" = 94 3/4" 94 3/4" = 95" 95" = 95 1/4" 95 1/4" = 95 3/4" 95 3/4" = 96" 96" = 96 1/4" 96 1/4" = 96 3/4" 96 3/4" = 97" 97" = 97 1/4" 97 1/4" = 97 3/4" 97 3/4" = 98" 98" = 98 1/4" 98 1/4" = 98 3/4" 98 3/4" = 99" 99" = 99 1/4" 99 1/4" = 99 3/4" 99 3/4" = 100" 100" = 100 1/4" 100 1/4" = 100 3/4" 100 3/4" = 101" 101" = 101 1/4" 101 1/4" = 101 3/4" 101 3/4" = 102" 102" = 102 1/4" 102 1/4" = 102 3/4" 102 3/4" = 103" 103" = 103 1/4" 103 1/4" = 103 3/4" 103 3/4" = 104" 104" = 104 1/4" 104 1/4" = 104 3/4" 104 3/4" = 105" 105" = 105 1/4" 105 1/4" = 105 3/4" 105 3/4" = 106" 106" = 106 1/4" 106 1/4" = 106 3/4" 106 3/4" = 107" 107" = 107 1/4" 107 1/4" = 107 3/4" 107 3/4" = 108" 108" = 108 1/4" 108 1/4" = 108 3/4" 108 3/4" = 109" 109" = 109 1/4" 109 1/4" = 109 3/4" 109 3/4" = 110" 110" = 110 1/4" 110 1/4" = 110 3/4" 110 3/4" = 111" 111" = 111 1/4" 111 1/4" = 111 3/4" 111 3/4" = 112" 112" = 112 1/4" 112 1/4" = 112 3/4" 112 3/4" = 113" 113" = 113 1/4" 113 1/4" = 113 3/4" 113 3/4" = 114" 114" = 114 1/4" 114 1/4" = 114 3/4" 114 3/4" = 115" 115" = 115 1/4" 115 1/4" = 115 3/4" 115 3/4" = 116" 116" = 116 1/4" 116 1/4" = 116 3/4" 116 3/4" = 117" 117" = 117 1/4" 117 1/4" = 117 3/4" 117 3/4" = 118" 118" = 118 1/4" 118 1/4" = 118 3/4" 118 3/4" = 119" 119" = 119 1/4" 119 1/4" = 119 3/4" 119 3/4" = 120" 120" = 120 1/4" 120 1/4" = 120 3/4" 120 3/4" = 121" 121" = 121 1/4" 121 1/4" = 121 3/4" 121 3/4" = 122" 122" = 122 1/4" 122 1/4" = 122 3/4" 122 3/4" = 123" 123" = 123 1/4" 123 1/4" = 123 3/4" 123 3/4" = 124" 124" = 124 1/4" 124 1/4" = 124 3/4" 124 3/4" = 125" 125" = 125 1/4" 125 1/4" = 125 3/4" 125 3/4" = 126" 126" = 126 1/4" 126 1/4" = 126 3/4" 126 3/4" = 127" 127" = 127 1/4" 127 1/4" = 127 3/4" 127 3/4" = 128" 128" = 128 1/4" 128 1/4" = 128 3/4" 128 3/4" = 129" 129" = 129 1/4" 129 1/4" = 129 3/4" 129 3/4" = 130" 130" = 130 1/4" 130 1/4" = 130 3/4" 130 3/4" = 131" 131" = 131 1/4" 131 1/4" = 131 3/4" 131 3/4" = 132" 132" = 132 1/4" 132 1/4" = 132 3/4" 132 3/4" = 133" 133" = 133 1/4" 133 1/4" = 133 3/4" 133 3/4" = 134" 134" = 134 1/4" 134 1/4" = 134 3/4" 134 3/4" = 135" 135" = 135 1/4" 135 1/4" = 135 3/4" 135 3/4" = 136" 136" = 136 1/4" 136 1/4" = 136 3/4" 136 3/4" = 137" 137" = 137 1/4" 137 1/4" = 137 3/4" 137 3/4" = 138" 138" = 138 1/4" 138 1/4" = 138 3/4" 138 3/4" = 139" 139" = 139 1/4" 139 1/4" = 139 3/4" 139 3/4" = 140" 140" = 140 1/4" 140 1/4" = 140 3/4" 140 3/4" = 141" 141" = 141 1/4" 141 1/4" = 141 3/4" 141 3/4" = 142" 142" = 142 1/4" 142 1/4" = 142 3/4" 142 3/4" = 143" 143" = 143 1/4" 143 1/4" = 143 3/4" 143 3/4" = 144" 144" = 144 1/4" 144 1/4" = 144 3/4" 144 3/4" = 145" 145" = 145 1/4" 145 1/4" = 145 3/4" 145 3/4" = 146" 146" = 146 1/4" 146 1/4" = 146 3/4" 146 3/4" = 147" 147" = 147 1/4" 147 1/4" = 147 3/4" 147 3/4" = 148" 148" = 148 1/4" 148 1/4" = 148 3/4" 148 3/4" = 149" 149" = 149 1/4" 149 1/4" = 149 3/4" 149 3/4" = 150" 150" = 150 1/4" 150 1/4" = 150 3/4" 150 3/4" = 151" 151" = 151 1/4" 151 1/4" = 151 3/4" 151 3/4" = 152" 152" = 152 1/4" 152 1/4" = 152 3/4" 152 3/4" = 153" 153" = 153 1/4" 153 1/4" = 153 3/4" 153 3/4" = 154" 154" = 154 1/4" 154 1/4" = 154 3/4" 154 3/4" = 155" 155" = 155 1/4" 155 1/4" = 155 3/4" 155 3/4" = 156" 156" = 156 1/4" 156 1/4" = 156 3/4" 156 3/4" = 157" 157" = 157 1/4" 157 1/4" = 157 3/4" 157 3/4" = 158" 158" = 158 1/4" 158 1/4" = 158 3/4" 158 3/4" = 159" 159" = 159 1/4" 159 1/4" = 159 3/4" 159 3/4" = 160" 160" = 160 1/4" 160 1/4" = 160 3/4" 160 3/4" = 161" 161" = 161 1/4" 161 1/4" = 161 3/4" 161 3/4" = 162" 162" = 162 1/4" 162 1/4" = 162 3/4" 162 3/4" = 163" 163" = 163 1/4" 163 1/4" = 163 3/4" 163 3/4" = 164" 164" = 164 1/4" 164 1/4" = 164 3/4" 164 3/4" = 165" 165" = 165 1/4" 165 1/4" = 165 3/4" 165 3/4" = 166" 166" = 166 1/4" 166 1/4" = 166 3/4" 166 3/4" = 167" 167" = 167 1/4" 167 1/4" = 167 3/4" 167 3/4" = 168" 168" = 168 1/4" 168 1/4" = 168 3/4" 168 3/4" = 169" 169" = 169 1/4" 169 1/4" = 169 3/4" 169 3/4" = 170" 170" = 170 1/4" 170 1/4" = 170 3/4" 170 3/4" = 171" 171" = 171 1/4" 171 1/4" = 171 3/4" 171 3/4" = 172" 172" = 172 1/4" 172 1/4" = 172 3/4" 172 3/4" = 173" 173" = 173 1/4" 173 1/4" = 173 3/4" 173 3/4" = 174" 174" = 174 1/4" 174 1/4" = 174 3/4" 174 3/4" = 175" 175" = 175 1/4" 175 1/4" = 175 3/4" 175 3/4" = 176" 176" = 176 1/4" 176 1/4" = 176 3/4" 176 3/4" = 177" 177" = 177 1/4" 177 1/4" = 177 3/4" 177 3/4" = 178" 178" = 178 1/4" 178 1/4" = 178 3/4" 178 3/4" = 179" 179" = 179 1/4" 179 1/4" = 179 3/4" 179 3/4" = 180" 180" = 180 1/4" 180 1/4" = 180 3/4" 180 3/4" = 181" 181" = 181 1/4" 181 1/4" = 181 3/4" 181 3/4" = 182" 182" = 182 1/4" 182 1/4" = 182 3/4" 182 3/4" = 183" 183" = 183 1/4" 183 1/4" = 183 3/4" 183 3/4" = 184" 184" = 184 1/4" 184 1/4" = 184 3/4" 184 3/4" = 185" 185" = 185 1/4" 185 1/4" = 185 3/4" 185 3/4" = 186" 186" = 186 1/4" 186 1/4" = 186 3/4" 186 3/4" = 187" 187" = 187 1/4" 187 1/4" = 187 3/4" 187 3/4" = 188" 188" = 188 1/4" 188 1/4" = 188 3/4" 188 3/4" = 189" 189" = 189 1/4" 189 1/4" = 189 3/4" 189 3/4" = 190" 190" = 190 1/4" 190 1/4" = 190 3/4" 190 3/4" = 191" 191" = 191 1/4" 191 1/4" = 191 3/4" 191 3/4" = 192" 192" = 192 1/4" 192 1/4" = 192 3/4" 192 3/4" = 193" 193" = 193 1/4" 193 1/4" = 193 3/4" 193 3/4" = 194" 194" = 194 1/4" 194 1/4" = 194 3/4" 194 3/4" = 195" 195" = 195 1/4" 195 1/4" = 195 3/4" 195 3/4" = 196" 196" = 196 1/4" 196 1/4" = 196 3/4" 196 3/4" = 197" 197" = 197 1/4" 197 1/4" = 197 3/4" 197 3/4" = 198" 198" = 198 1/4" 198 1/4" = 198 3/4" 198 3/4" = 199" 199" = 199 1/4" 199 1/4" = 199 3/4" 199 3/4" = 200" 200" = 200 1/4" 200 1/4" = 200 3/4" 200 3/4" = 201" 201" = 201 1/4" 201 1/4" = 201 3/4" 201 3/4" = 202" 202" = 202 1/4" 202 1/4" = 202 3/4" 202 3/4" = 203" 203" = 203 1/4" 203 1/4" = 203 3/4" 203 3/4" = 204" 204" = 204 1/4" 204 1/4" = 204 3/4" 204 3/4" = 205" 205" = 205 1/4" 205 1/4" = 205 3/4" 205 3/4" = 206" 206" = 206 1/4" 206 1/4" = 206 3/4" 206 3/4" = 207" 207" = 207 1/4" 207 1/4" = 207 3/4" 207 3/4" = 208" 208" = 208 1/4" 208 1/4" = 208 3/4" 208 3/4" = 209" 209" = 209 1/4" 209 1/4" = 209 3/4" 209 3/4" = 210" 210" = 210 1/4" 210 1/4" = 210 3/4" 210 3/4" = 211" 211" = 211 1/4" 211 1/4" = 211 3/4" 211 3/4" = 212" 212" = 212 1/4" 212 1/4" = 212 3/4" 212 3/4" = 213" 213" = 213 1/4" 213 1/4" = 213 3/4" 213 3/4" = 214" 214" = 214 1/4" 214 1/4" = 214 3/4" 214 3/4" = 215" 215" = 215 1/4" 215 1/4" = 215 3/4" 215 3/4" = 216" 216" = 216 1/4" 216 1/4" = 216 3/4" 216 3/4" = 217" 217" = 217 1/4" 217 1/4" = 217 3/4" 217 3/4" = 218" 218" = 218 1/4" 218 1/4" = 218 3/4" 218 3/4" = 219" 219" = 219 1/4" 219 1/4" = 219 3/4" 219 3/4" = 220" 220" = 220 1/4" 220 1/4" = 220 3/4" 220 3/4" = 221" 221" = 221 1/4" 221 1/4" = 221 3/4" 221 3/4" = 222" 222" = 222 1/4" 222 1/4" = 222 3/4" 222 3/4" = 223" 223" = 223 1/4" 223 1/4" = 223 3/4" 223 3/4" = 224" 224" = 224 1/4" 224 1/4" = 224 3/4" 224 3/4" = 225" 225" = 225 1/4" 225 1/4" = 225 3/4" 225 3/4" = 226" 226" = 226 1/4" 226 1/4" = 226 3/4" 226 3/4" = 227" 227" = 227 1/4" 227 1/4" = 227 3/4" 227 3/4" = 228" 228" = 228 1/4" 228 1/4" = 228 3/4" 228 3/4" = 229" 229" = 229 1/4" 229 1/4" = 229 3/4" 229 3/4" = 230" 230" = 230 1/4" 230 1/4" = 230 3/4" 230 3/4" = 231" 231" = 231 1/4" 231 1/4" = 231 3/4" 231 3/4" = 232" 232" = 232 1/4" 232 1/4" = 232 3/4" 232 3/4" = 233" 233" = 233 1/4" 233 1/4" = 233 3/4" 233 3/4" = 234" 234" = 234 1/4" 234 1/4" = 234 3/4" 234 3/4" = 235" 235" = 235 1/4" 235 1/4" = 235 3/4" 235 3/4" = 236" 236" = 236 1/4" 236 1/4" = 236 3/4" 236 3/4" = 237" 237" = 237 1/4" 237 1/4" = 237 3/4" 237 3/4" = 238" 238" = 238 1/4" 238 1/4" = 238 3/4" 238 3/4" = 239" 239" = 239 1/4" 239 1/4" = 239 3/4" 239 3/4" = 240" 240" = 240 1/4" 240 1/4" = 240 3/4" 240 3/4" = 241" 241" = 241 1/4" 241 1/4" = 241 3/4" 241 3/4" = 242" 242" = 242 1/4" 242 1/4" = 242 3/4" 242 3/4" = 243" 243" = 243 1/4" 243 1/4" = 243 3/4" 243 3/4" = 244" 244" = 244 1/4" 244 1/4" = 244 3/4" 244 3/4" = 245" 245" = 245 1/4" 245 1/4" = 245 3/4" 245 3/4" = 246" 246" = 246 1/4" 246 1/4" = 246 3/4" 246 3/4" = 247" 247" = 247 1/4" 247 1/4" = 247 3/4" 247 3/4" = 248" 248" = 248 1/4" 248 1/4" = 248 3/4" 248 3/4" = 249" 249" = 249 1/4" 249 1/4" = 249 3/4" 249 3/4" = 250" 250" = 250 1/4" 250 1/4" = 250 3/4" 250 3/4" = 251" 251" = 251 1/4" 251 1/4" = 251 3/4" 251 3/4" = 252" 252" = 252 1/4" 252 1/4" = 252 3/4" 252 3/4" = 253" 253" = 253 1/4" 253 1/4" = 253 3/4" 253 3/4" = 254" 254" = 254 1/4" 254 1/4" = 254 3/4" 254 3/4" = 255" 255" = 255 1/4" 255 1/4" = 255 3/4" 255 3/4" = 256" 256" = 256 1/4" 256 1/4" = 256 3/4" 256 3/4" = 257" 257" = 257 1/4" 257 1/4" = 257 3/4" 257 3/4" = 258" 258" = 258 1/4" 258 1/4" = 258 3/4" 258 3/4" = 259" 259" = 259 1/4" 259 1/4" = 259 3/4" 259 3/4" = 260" 260" = 260 1/4" 260 1/4" = 260 3/4" 260 3/4" = 261" 261" = 261 1/4" 261 1/4" = 261 3/4" 261 3/4" = 262" 262" = 262 1/4" 262 1/4" = 262 3/4" 262 3/4" = 263" 263" = 263 1/4" 263 1/4" = 263 3/4" 263 3/4" = 26				

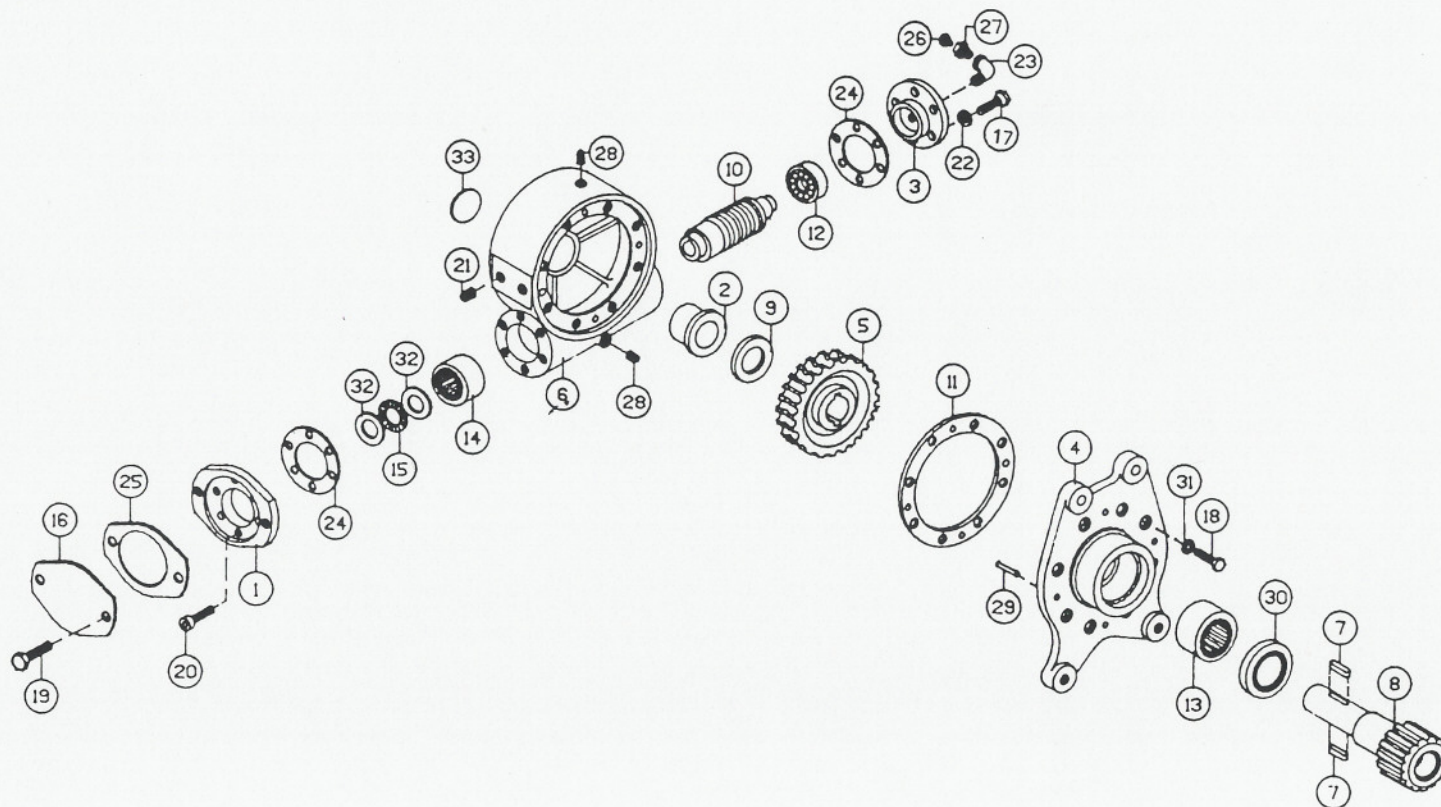
ACTUATOR, HOIST -- 8005H -- AW-480075

ITEM	QTY.	PART NO.	DESCRIPTION
1	1	360330	ADAPTER
2	1	360331	CAM PLATE
3	1	360332	COUPLING
4	1	360333	COVER, WORM GEAR
5	1	360334	COVER, WORM BRAKE
6	1	360335	GEAR, R.H.
7	1	360336	BRAKE HOUSING
8	1	360337	HOUSING, GEAR
9	1	360338	HUB, GEAR
10	1	360339	HUB, WORM BRAKE
11	2	360340	KEY, RD. ENDS
12	2	360341	KEY, RD. ENDS
13	1	(Ref) 800321-001	KEY, 3/8" (Ref. for Drum)
14	1	360342	RETAINER
15	1	480078	SHAFT
16	1	360344	WORM, R.H.
17	2	360345	BALL, POPPET
18	2	360346	BEARING, BALL
19	1	360347	BUSHING
20	1	360348	BUSHING
21	1	360349	COVER, MOTOR (Ref. For Shipping)
22	8	005500	CAPSCREW, 1/4NC X 3/4 G5
23	4	005604	CAPSCREW, 1/4NC X 1
24	2	360350	CAPSCREW, 1/4NC X 3/4 C.P.
25	6	007807	CAPSCREW, 5/16NC X 3/4 G5
26	1	360351	CAPSCREW, 3/8NC X 1-1/2 G2
27	2	(Ref) 010202	CAPSCREW, 1/2NC X 1" (For Shipping)
28	4	005610	CAPSCREW, 1/4NC X 3/4 S.HD.
29	4	360352	CAPSCREW, 1/4NC X 1-3/4 S.HD. L/W
30	1	360353	NUT, 3/8NC HX. JAM
31	4	360354	LOCKWASHER, 1/4 MED. SECT. C.P.
32	2	360355	WASHER - FLAT, 1/4 ALUM.
33	1	360356	WASHER - FLAT, 3/8 ALUM.
34	1	360357	GASKET
35	2	360358	GASKET
36	1	360359	GASKET
37	1	360360	RELIEF FITTING
38	1	360361	REDUCER
39	2	360362	PIPE PLUG
40	1	360363	SPIROL PIN
41	1	360364	PLATE, THRUST
42	1	360356	OIL SEAL
43	1	360366	OIL SEAL
44	1	360367	SPRING, FLAT
45	1	360368	SPRING
46	1	360369	THRUST WASHER

AUTOMATIC SAFETY BRAKE ASSEMBLY (OIL COOLED) HOIST

1. Winch has right hand worm and gear and spools over drum; use number one slots for brake balls.
2. Install brake hub on winch worm with key.
3. Assemble balls in cam using hard grease to hold balls in place.
4. Install cam and balls, fitting balls in slots on hub.
5. Install brake disc.
6. Install retainer.
7. Install flat spring in brake housing cover (arch down).
8. Install brake housing cover, fitting pins in slots on spring and holes in retainer.
9. Test brake by shifting winch to UP then DOWN to see if brake is working in proper rotation. If not, remove brake and locate brake balls in opposite set of slots.
10. Adjust to suit by tightening or loosening screw on outside of cover. When proper adjustment is obtained, secure screw with jam nut.





AUTO CRANE COMPANY

P.O. BOX 45548 • TULSA, OKLAHOMA 74145
9260 BROKEN ARROW EXPRESSWAY • 918-627-9475

TITLE

GEAR BOX, ROTATION - 8005H

SCALE

—

SIZE

A

DRAWING NO.

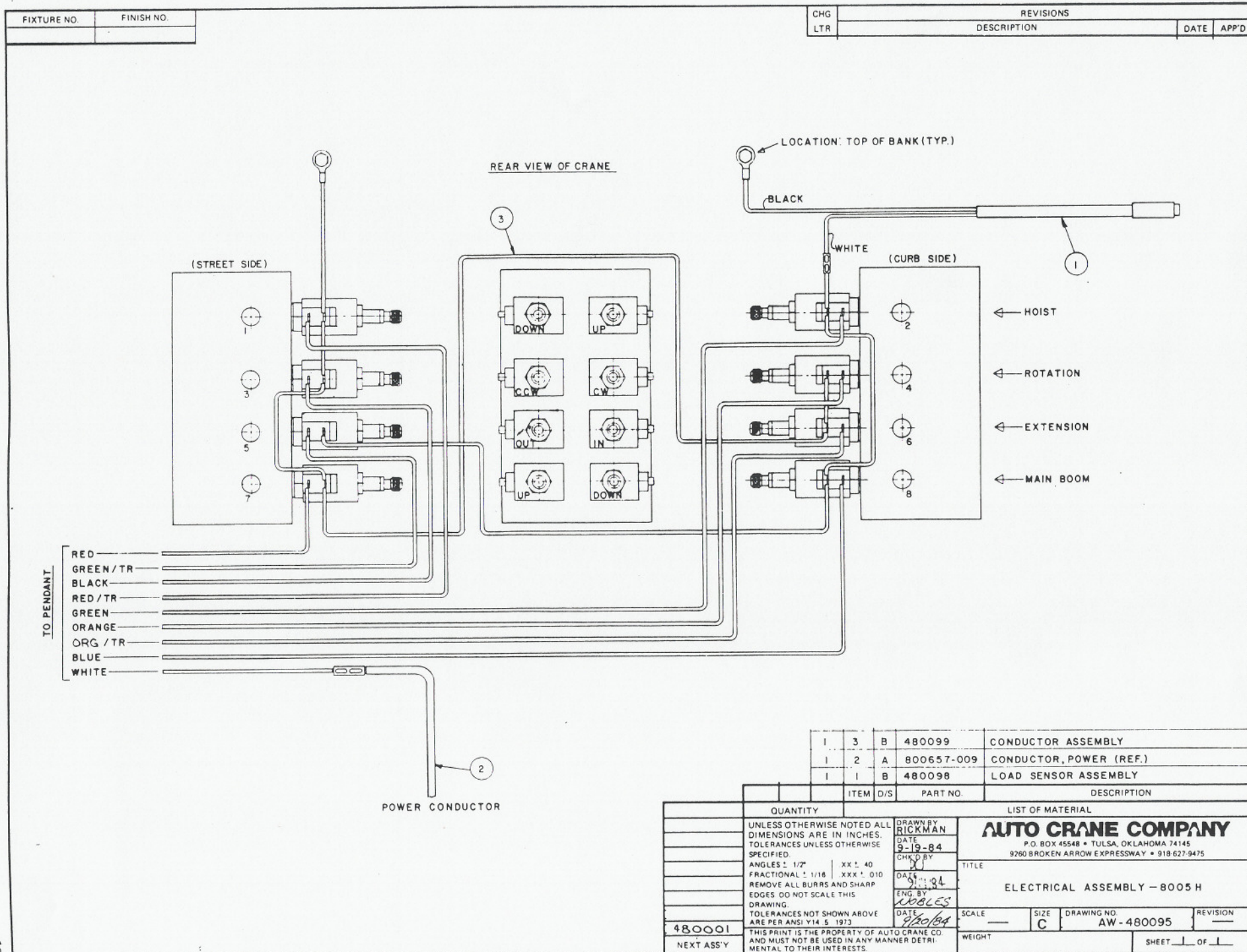
AW - 480028

REVISION

—

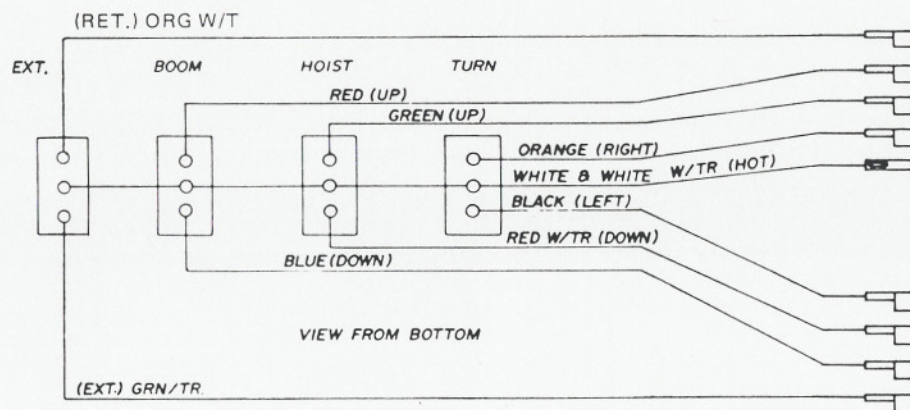
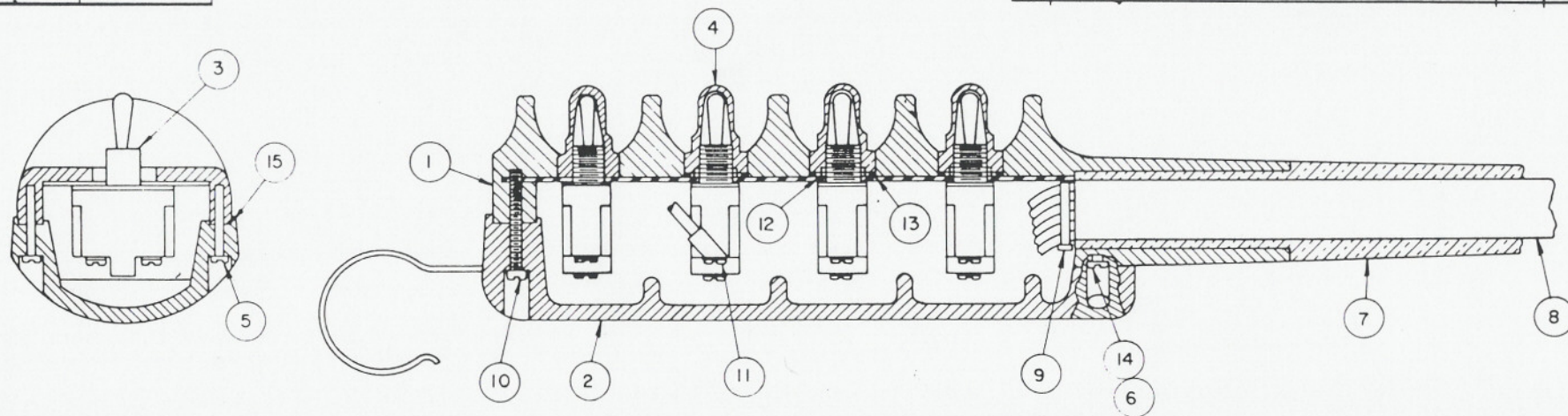
GEAR BOX, ROTATION - 8005H - AW-480028

ITEM	QTY.	PART NO.	DESCRIPTION
1	1	480240	ADAPTER
2	1	480241	BUSHING
3	1	480242	CAP, BRG.
4	1	480243	COVER
5	1	480244	GEAR, R.H.
6	1	480245	HOUSING
7	2	480246	KEY
8	1	480247	SHAFT, OUTPUT
9	1	480248	WASHER, THRUST
10	1	480249	WORM, R.H.
11	1	480250	GASKET
12	1	480251	BEARING, BALL
13	1	480252	BEARING, NEEDLE
14	1	480253	BEARING, NEEDLE
15	1	480254	BEARING, THRUST
16	1	480255	COVER
17	6	007400	CAPSCREW, 5/16-18NC X 1 LG. HX.HD.
18	8	007804	CAPSCREW, 5/16-18NC X 1-1/4 LG. HX.HD. CP
19	2	011508	CAPSCREW, 1/2-13NC X 1 LG. HX.HD.
20	6	480256	CAPSCREW, 5/16-18NC X 1 LG. HX.SOC.HD. LOC-WEL
21	4	480257	SETSCREW, 7/16-14NC X 1/2 SOC.HD.
22	6	480258	LOCKWASHER, 5/16 MED. SECT. CP
23	1	480259	ELBOW, 90 DEG.
24	2	480260	GASKET
25	1	480261	GASKET
26	1	480262	RELIEF FITTING
27	1	480263	REDUCER
28	2	480264	PIPE PLUG
29	4	480265	DOWEL PIN
30	1	480266	SEAL, OIL
31	8	480267	SEAL, WASHER
32	2	480268	THRUST WASHER
33	1	480269	PLUG, EXPANSION



FIXTURE NO	FINISH NO

CHG	REVISIONS		DATE	APP'D
LTR	DESCRIPTION			



15	21"	800580	3/4" WIDTH OKONITE RUBBER TAPE
14	4	019700	WASHER, SPLIT LOCK #8 PLATED
13	4	642100	O-RING
12	4	675271	NUT
11	15	000101	TERMINALS T & B
10	1	004700	SCREW, SLT. PAN HD. S.T. #8 X 1 1/2"
9	2	634401	TY-RAP CABLE TIE
8	1	480097	CONDUCTOR CABLE (27') STD.
7	1	633801	CABLE ADAPTER
6	2	005101	SCREW, S.T. - SLT. PAN HD #8 X 1 1/4
5	10	005001	SCREW, S.T. - SLT. PAN HD. #8 X 3/4
4	4	640302	BOOT - TOGGLE SWITCH
3	4	622000	TOGGLE SWITCH
2	1	631700	BOTTOM COVER
1	1	631602	PENDANT HOUSING

ITEM	QTY	PART NO.	DESCRIPTION
LIST OF MATERIAL			
UNLESS OTHERWISE NOTED ALL DIMENSIONS ARE IN INCHES. TOLERANCES UNLESS OTHERWISE SPECIFIED			
ANGLES ± 1/2° XX ± .40			
FRACTIONAL ± 1/16 XXX ± .010			
REMOVE ALL BURRS AND SHARP EDGES. DO NOT SCALE THIS DRAWING			
TOLERANCES NOT SHOWN ABOVE ARE PER ANSI Y14.5-1973			
THIS PRINT IS THE PROPERTY OF AUTO CRANE CO AND MUST NOT BE USED IN ANY MANNER DETRIMENTAL TO THEIR INTERESTS			
480001			
NEXT ASS'Y			

DRAWN BY
DATE
CHK'D BY
DATE
ENG BY
DATE

AUTO CRANE COMPANY
P.O. BOX 45548 • TULSA, OKLAHOMA 74145
926C BROKEN ARROW EXPRESSWAY • 918-627-9475

TITLE

PENDANT ASSEMBLY - 8005H

SCALE

SIZE

DRAWING NO

AW-480096

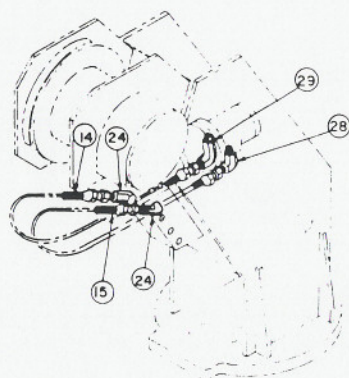
REVISION

WEIGHT

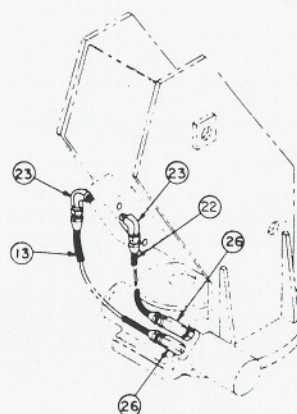
SHEET 1 OF 1

PICTURE NO.	FIGURE NO.

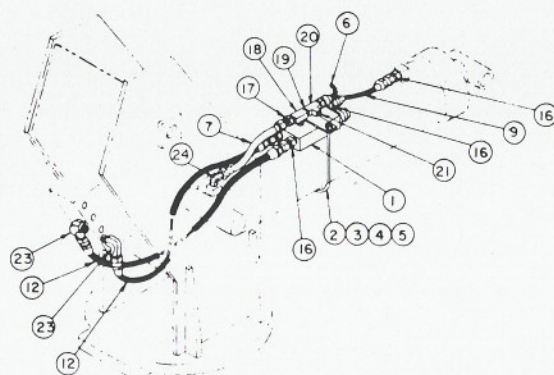
CHG	REVISIONS	DATE	APPD
LTR	DESCRIPTION		



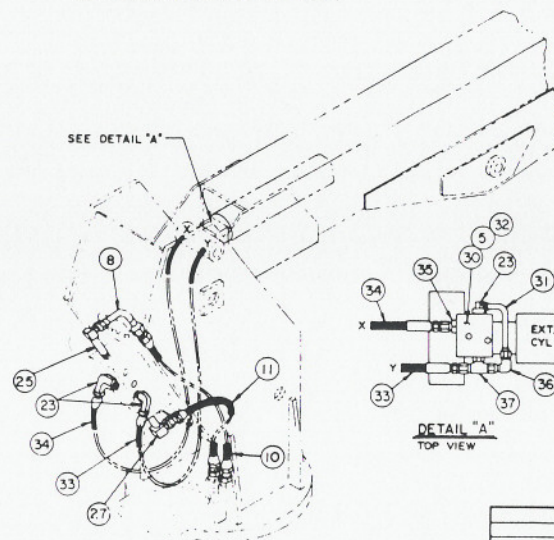
HOIST
(SPOOL - TOP)



ROTATION
(SPOOL - 2ND FROM TOP)

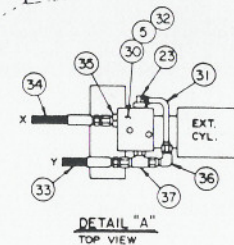


BOOM-UP
(SPOOL - BOTTOM)



(SPOOL - 3RD FROM TOP)

PRESSURE-RETURN
EXTENSION



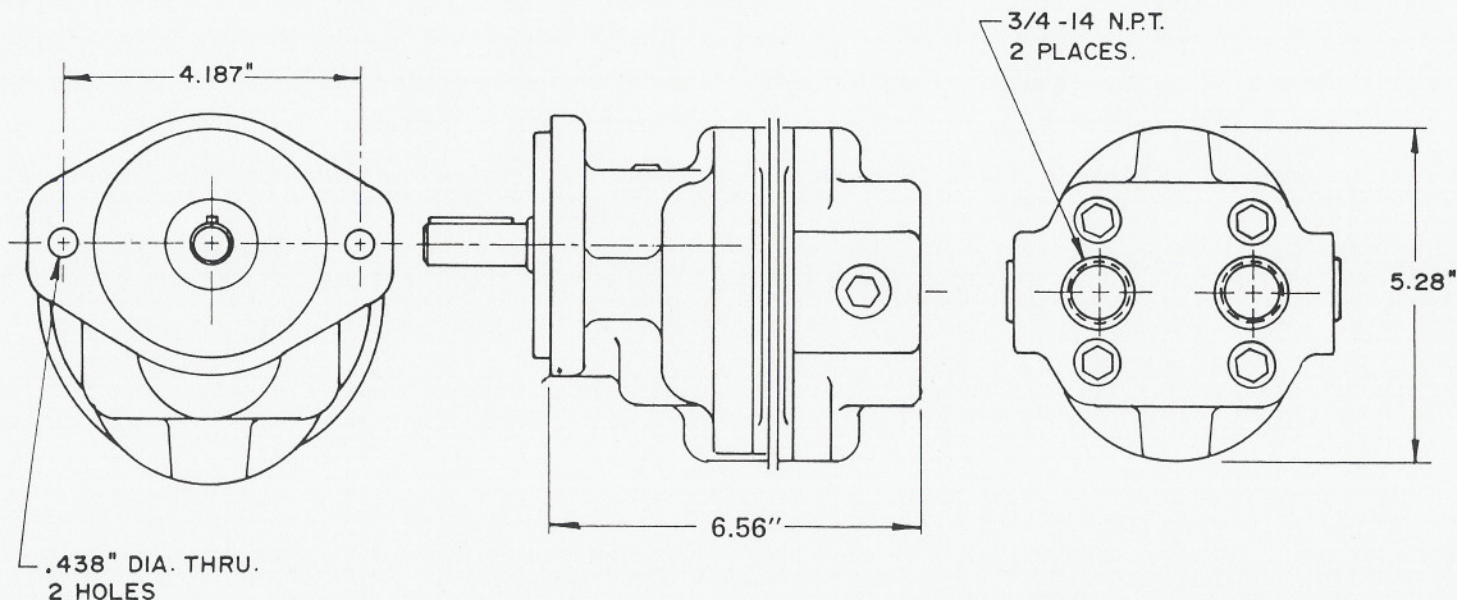
DETAIL "A"
TOP VIEW

QUANTITY	ITEM	D/S	PART NO.	DESCRIPTION
LIST OF MATERIAL				
UNLESS OTHERWISE NOTED ALL DIMENSIONS ARE IN INCHES TOLERANCES UNLESS OTHERWISE SPECIFIED				
ANGLES - 1° P. 1/16" R&T - .040				
FRACTIONAL - 1/16" R&T - .010				
REMOVE ALL BURRS AND SHARP EDGES DO NOT SCALE THIS DRAWING				
TOLERANCES NOT SHOWN ABOVE ARE PER ANSI Y14.5, 1987				
THIS PRINT IS THE PROPERTY OF AUTO CRANE CO. AND MUST NOT BE USED IN ANY MANNER DETRIMENTAL TO THEIR INTERESTS				
NEXT ASSY				
DRAWN BY: J. J. JONES				
CHECKED BY: J. J. JONES				
DATE: 10/1/78				
EXT. CYL.				
TITLE: HYDRAULIC ASSEMBLY - 8005H				
SCALE: 1" = 1"				
SIZE: D				
DRAWING NO: AW-016				
REVISION: 1				
WEIGHT: 1.00				
SHEET 1 OF 1				

HYDRAULIC ASSEMBLY - 8005H - AW-016

ITEM	QTY.	PART NO.	DESCRIPTION
1	1	480187	VALVE, COUNTERBALANCE
2	1	480146	U-BOLT
3	1	480145	CLAMP
4	2	015900	NUT, HX 1/4 NC
5	4	020200	LOCKWASHER, 1/4
6	1	480043	LOAD SENSOR (REF.)
7	1	480210	TUBE ASS'Y
8	1	480211	TUBE ASS'Y
9	1	480209	HOSE ASS'Y
10	1	480200	HOSE ASS'Y (PRESSURE)
11	1	480201	HOSE ASS'Y (RETURN)
12	2	480208	HOSE ASS'Y (BOOM-UP 31-1/2")
13	1	480205	HOSE ASS'Y (ROTATION 19-1/4")
14	1	480203	HOSE ASS'Y (HOIST 24-3/4")
15	1	480202	HOSE ASS'Y (HOIST 21-1/2")
16	4	360042	ADAPTER 3/8 P/9/16-18 JIC
17	1	360040	ADAPTER 3/8 P/ 3/4-16 JIC
18	1	360053	TEE 3/8 P. FM RUN / 3/8 P. M
19	1	200880	BUSHING 3/8 P/ 1/4 P
20	1	480193	TEE 1/4 P EXT./ 1/4 P INT.
21	1	000209	PLUG 1/4 PIPE
22	1	480204	HOSE ASS'Y (ROTATION 17-1/2")
23	7	200892	ELL 90° 3/8 P/ 9/16-18JIC
24	3	360044	ELL 90° 3/8 P/ 3/4-16 JIC STD
25	1	480190	ELL 90° 3/8 P/ 3/4-16 JIC EXT LONG
26	2	202759	ELL 90° 1/2 P/ 9/16-18JIC
27	1	480213	ELL, 90° 3/8 PIPE /3/4-16 JIC LONG
28	1	360043	ELL 90° 1/2 P/ 3/4-16JIC STD
29	1	360045	ELL 90° 1/2 P/ 3/4-16JIC MED. LONG
30	1	330412	VALVE, COUNTERBALANCE
31	1	480212	TUBE ASSEMBLY
32	2	005810	SCREW, HX.HD. 1/4NC X 1-3/4 LG-G5
33	1	480207	HOSE ASSEMBLY
34	1	480206	HOSE ASSEMBLY
35	1	200876	ADAPTER, O-RING
36	1	480194	ELL, 90° #6 JIC SWIVEL/ #6 JIC
37	1	241168	TEE, O-RING/ 37° JIC

FIXTURE NO.	FINISH NO.	CHG	REVISIONS	DATE	APP'D
		LTR	DESCRIPTION		



NOTE:
PUMP SPEED 1000 R.P.M. (STANDARD)

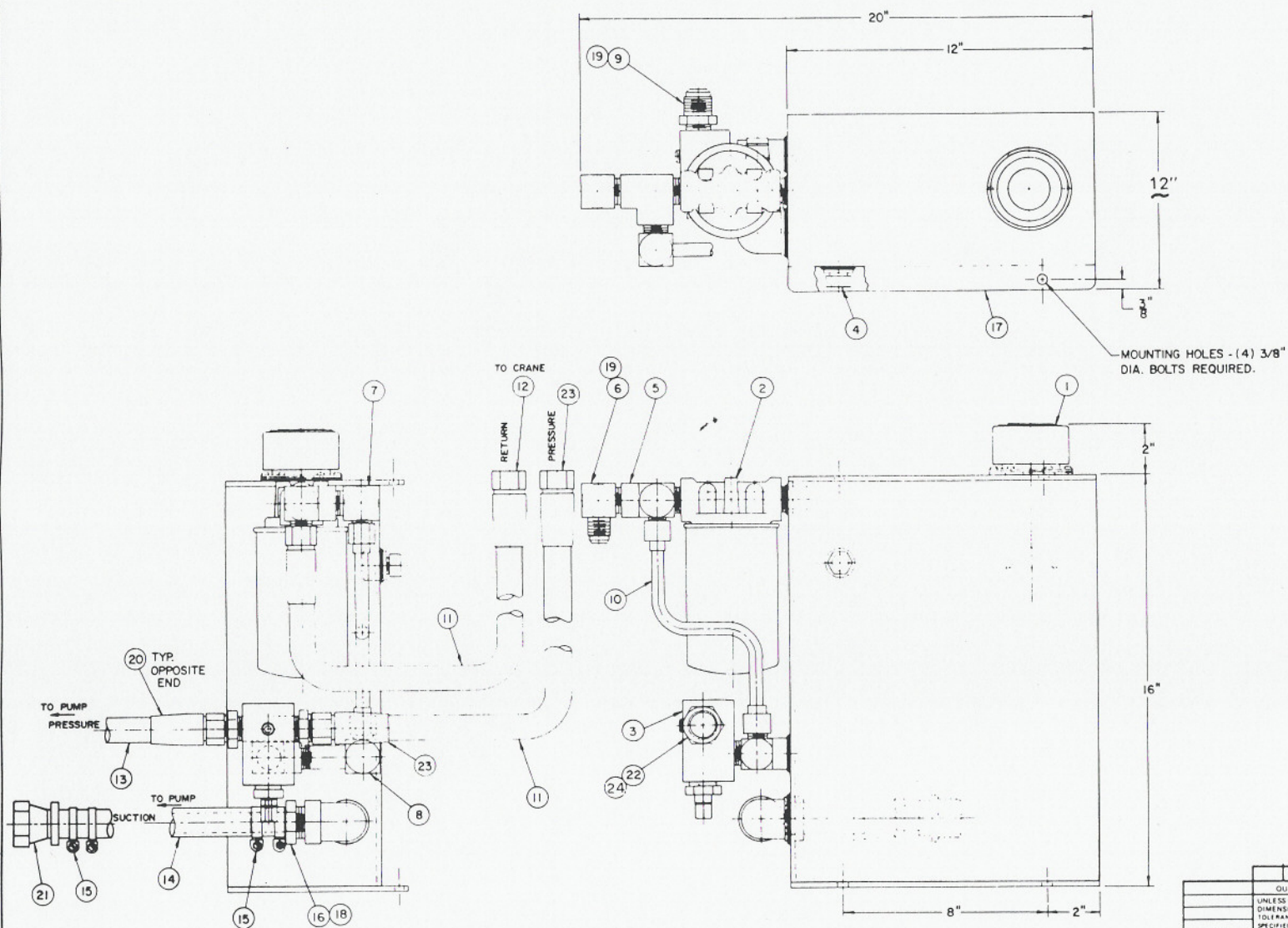
ADAPTER: SAE 2 BOLT FLANGE.
SHAFT: STRAIGHT SHAFT WITH KEY 3/4" DIA. 2-3/4" LONG
3/16" SQ. KEY 1-5/8" LONG

NOTE:
TO ORDER HYD. PUMP ASSEMBLY
USE PART NO. 480022 WHICH
CONSISTS OF ADAPTER FITTINGS
P/N 360055 AND 360056.

ITEM	D/S	PART NO.	DESCRIPTION
QUANTITY		LIST OF MATERIAL	
UNLESS OTHERWISE NOTED ALL DIMENSIONS ARE IN INCHES. TOLERANCES UNLESS OTHERWISE SPECIFIED.		DRAWN BY <i>Armstrong</i>	
ANGLES $\pm 1/2^\circ$		DATE 8-23-84	
FRACTIONAL $\pm 1/16$		CHK'D BY	
REMOVE ALL BURRS AND SHARP EDGES. DO NOT SCALE THIS DRAWING.		DATE	
TOLERANCES NOT SHOWN ABOVE ARE PER ANSI Y14.5 - 1973		ENG. BY	
THIS PRINT IS THE PROPERTY OF AUTO CRANE CO. AND MUST NOT BE USED IN ANY MANNER DETRIMENTAL TO THEIR INTERESTS.		DATE	
NEXT ASS'Y		SCALE \sim	
		SIZE B	
		DRAWING NO. AW-480018	
		REVISION	
		WEIGHT	
		SHEET 1 OF 1	

AUTO CRANE COMPANY
P.O. BOX 45548 • TULSA, OKLAHOMA 74145
9260 BROKEN ARROW EXPRESSWAY • 918-627-9475

PUMP, HYDRAULIC



NOTE:
WIDTH NOT SHOWN
PROPORTIONAL.

QUANTITY	ITEM DIS	PART NO	DESCRIPTION
<p>UNLESS OTHERWISE NOTED ALL DIMENSIONS ARE IN INCHES. TOLERANCES UNLESS OTHERWISE SPECIFIED:</p> <p>ANGLES: 1/2° RCT: 40° FRACTIONAL: 1/16" RCT: 1/16" REMOVE ALL BURRS AND SHARP EDGES DO NOT SCALE THIS DRAWING.</p> <p>TOLERANCE NOT SHOWN ABOVE ARE PER ASME Y12.9 (1987)</p> <p>FOR THE USE OF THE USER OF THIS DRAWING OF AUTO CRANE CO. AND MUST NOT BE USED IN ANY MANNER DETRIMENTAL TO THE SAFETY OF THE USER.</p>			
<p>DRW BY: <u> </u> DATE: <u> </u> TIME BY: <u> </u> DATE: <u> </u></p>		<p>LIST OF MATERIAL</p> <p>AUTO CRANE COMPANY 400 N. 10TH ST. OMAHA, NE 68102 8200 S. 10TH AVE. LINCOLN, NE 68504 TEL: 402-441-1111 FAX: 402-441-1112</p> <p>RESERVOIR ASSEMBLY 8005H</p> <p>SCALE: <u> </u> SIZE: <u> </u> OR: <u> </u> REVISION: <u> </u></p> <p>WEIGHT: <u> </u> DWG. NO. <u> </u></p>	

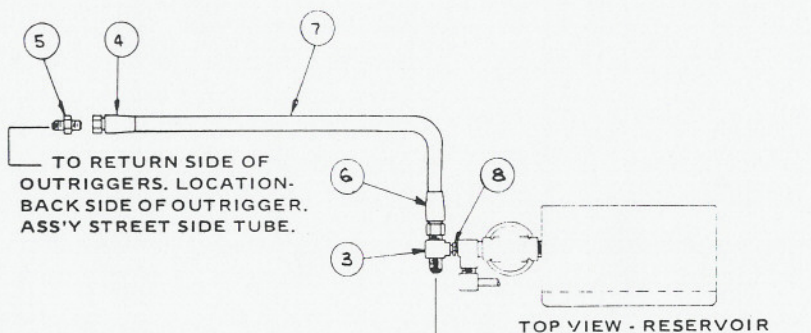
RESERVOIR ASSEMBLY - 8005H - AW-480150

ITEM	QTY.	PART NO.	DESCRIPTION
1	1	360151	FILLER ASSY., RESERVOIR
2	1	360156	FILTER, HYD. FLUID
3	1	480156	VALVE, RELIEF (MAIN PRESSURE)
4	1	360150	PLUG, RESERVOIR SIGHT
5	1	360262	TEE
6	1	360263	ELL
7	1	551222	ELL
8	1	360264	ELL
9	1	551215	ADAPTER, STRAIGHT
10	1	360267	TUBE ASSY.
11	1	551228-001	HOSE (SIZE 8) - 9 FT.
12	2	551227	FITTING, REUSABLE 10-8
13	1	360274-001	HOSE (SIZE 12) - 20 FT.
14	1	360275-001	HOSE (SIZE 16) - 20 FT.
15	4	360268	CLAMPS, HOSE
16	1	360270	ADAPTER, STRAIGHT SUCTION
17	1	480151	RESERVOIR, WELDMENT
18	1	360271	CAP, DUST (1" I.D.) PLASTIC
19	2	360272	CAP, DUST (7/8" I.D.) PLASTIC
20	2	360269	FITTING, REUSABLE 10-12
21	1	360273	ADAPTER, HOSE
22	1	360054	ADAPTER, ST. 1/2 NPT / 3/4-16 JIC
23	2	360266	FITTING, REUSABLE 8-8
24	1	360276	CAP, DUST 3/4 I.D. PLASTIC

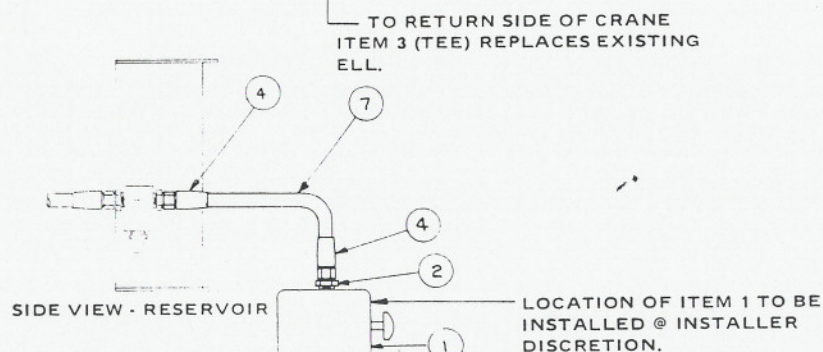
NOTE: ITEMS 11, 12, 13, 14, 15, 20, 21 AND 23 ARE SHIPPED
LOOSE FOR CUSTOMER INSTALLATION.

FIXTURE NO.	FINISH NO.

CHG LTR	REVISIONS		
	DESCRIPTION	DATE	APP'D

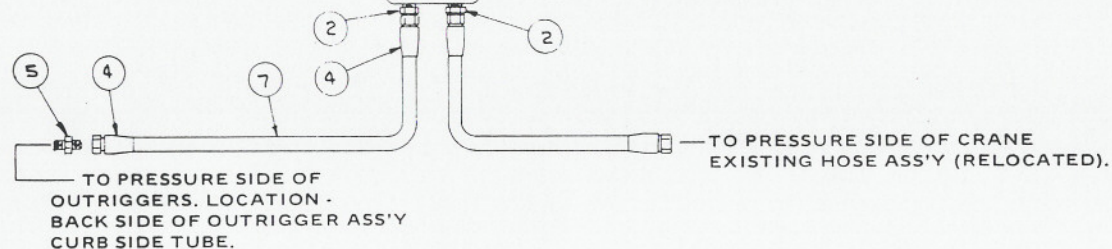


TOP VIEW - RESERVOIR



SIDE VIEW - RESERVOIR

LOCATION OF ITEM 1 TO BE
INSTALLED @ INSTALLER
DISCRETION.



TO PRESSURE SIDE OF
OUTRIGGERS. LOCATION -
BACK SIDE OF OUTRIGGER ASS'Y
CURB SIDE TUBE.

TO PRESSURE SIDE OF CRANE
EXISTING HOSE ASS'Y (RELOCATED).

8	1	480196	ADAPTOR, ST. #8 PIPE/#12 PIPE
7	1	551228-002	HOSE NO. 8 (12 FEET)
6	1	551227	FITTING, REUSABLE 10-8
5	2	480199	ADAPTOR, ST. #8JIC/#6JIC
4	4	360266	FITTING, REUSABLE 8-8
3	1	480197	TEE, #10 RUN JIC/#8 PIPE FM
2	3	360054	ADAPTOR, ST. 1/2 NPT/3/4-16 JIC
1	1	480236	VALVE SELECTOR

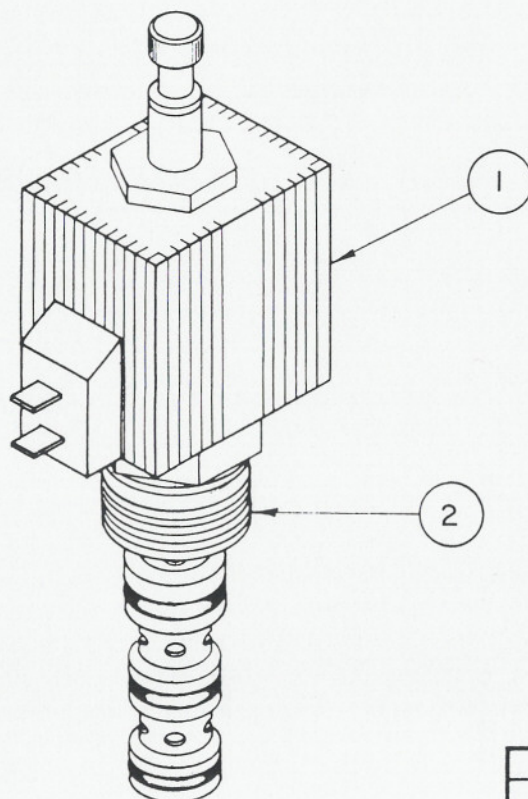
Item	Qty.	Part No.	Description
------	------	----------	-------------

LIST OF MATERIAL

UNLESS OTHERWISE NOTED ALL DIMENSIONS ARE IN INCHES. TOLERANCES UNLESS OTHERWISE SPECIFIED.		DRAWN BY K. B. BARN		AUTO CRANE COMPANY	
ANGLES ± 1/2° .XX ± .40		DATE 3-28-84		P.O. BOX 45548 • TULSA, OKLAHOMA 74145	
FRACTIONAL ± 1/16 .XXX ± .010		CHK'D BY DL		9200 BROKEN ARROW EXPRESSWAY • 918-627-9475	
REMOVE ALL BURRS AND SHARP EDGES. DO NOT SCALE THIS DRAWING.		DATE 10/1/84		TITLE KIT, OUTRIGGER INSTALLATION	
TOLERANCES NOT SHOWN ABOVE ARE PER ANSI Y14.5 - 1973		ENG. BY 1000ES		SCALE C	
THIS PRINT IS THE PROPERTY OF AUTO CRANE CO. AND MUST NOT BE USED IN ANY MANNER DETRIMENTAL TO THEIR INTERESTS.		DATE 10/1/84		DRAWING NO. AW-480235	
NEXT ASS'Y		WEIGHT		REVISION 1	
				SHEET 1 OF 1	

FIXTURE NO.	FINISH NO.

CHG	REVISIONS		
LTR	DESCRIPTION	DATE	APP'D



2	1	-	480186	SPOOL ASSEMBLY
1	1	-	480185	COIL, CARTRIDGE

ITEM	QTY	D/S	PART NO.	DESCRIPTION
------	-----	-----	----------	-------------

QUANTITY		LIST OF MATERIAL			
UNLESS OTHERWISE NOTED ALL DIMENSIONS ARE IN INCHES. TOLERANCES UNLESS OTHERWISE SPECIFIED. ANGLES $\pm 1/2^\circ$.XX $\pm .40$ FRACTIONAL $\pm 1/16$.XXX $\pm .010$ REMOVE ALL BURRS AND SHARP EDGES. DO NOT SCALE THIS DRAWING. TOLERANCES NOT SHOWN ABOVE ARE PER ANSI Y14.5 - 1973 THIS PRINT IS THE PROPERTY OF AUTO CRANE CO. AND MUST NOT BE USED IN ANY MANNER DETRIMENTAL TO THEIR INTERESTS.		DRAWN BY <i>Lightstrong</i> DATE 9-20-84 CHK'D BY DATE ENG. BY DATE		AUTO CRANE COMPANY P.O. BOX 45548 • TULSA, OKLAHOMA 74145 9260 BROKEN ARROW EXPRESSWAY • 918-627-9475	
		TITLE VALVE CARTRIDGE			
		SCALE ~	SIZE B	DRAWING NO. AW-480184	REVISION
		WEIGHT		SHEET <u>1</u> OF <u>1</u>	
		NEXT ASS'Y			

HYDRAULICS – 8005H

COUNTERBALANCE VALVE ADJUSTMENT

REF. SEE HYDRAULIC ASSEMBLY AW-016 – PAGE 21

1. With PTO disengaged and boom properly supported, remove pipe plug (Item 21, P/N 000209) shown on Boom-Up Illustration. Install a pressure gauge (0 - 2500 psi) into tee (Item 20, P/N 480193).
2. Engage PTO (Requirements: Pump speed setting 1000 R.P.M., 8 G.P.M., 2000 psi to crane). With no load on boom, boom-up to 75° (Boom-up cylinder fully extended). Activate Boom-down and note pressure reading. If pressure reading is not approximately 1300 psi, the counterbalance valve requires adjustment.
 - A. To increase the counterbalance setting, turn the adjustment screw counter-clockwise (Location: Front of Item 1, P/N 360153 - Counterbalance Valve; curb side with boom toward cab. Adjustment: Loosen nut and adjust allen head set screw).
 - B. To reduce the counterbalance setting, turn the adjustment screw clockwise.
3. Tighten nut on adjustment screw and repeat procedure if needed to obtain the proper pressure setting.
4. Disengage PTO, remove the pressure gauge and install pipe plug. Crane is now ready for operation.

NOTE:

In an emergency situation when it becomes necessary to lower the boom without flow present, the counterbalance adjustment can be turned clockwise until the boom begins to descend.

RELIEF VALVE SETTING

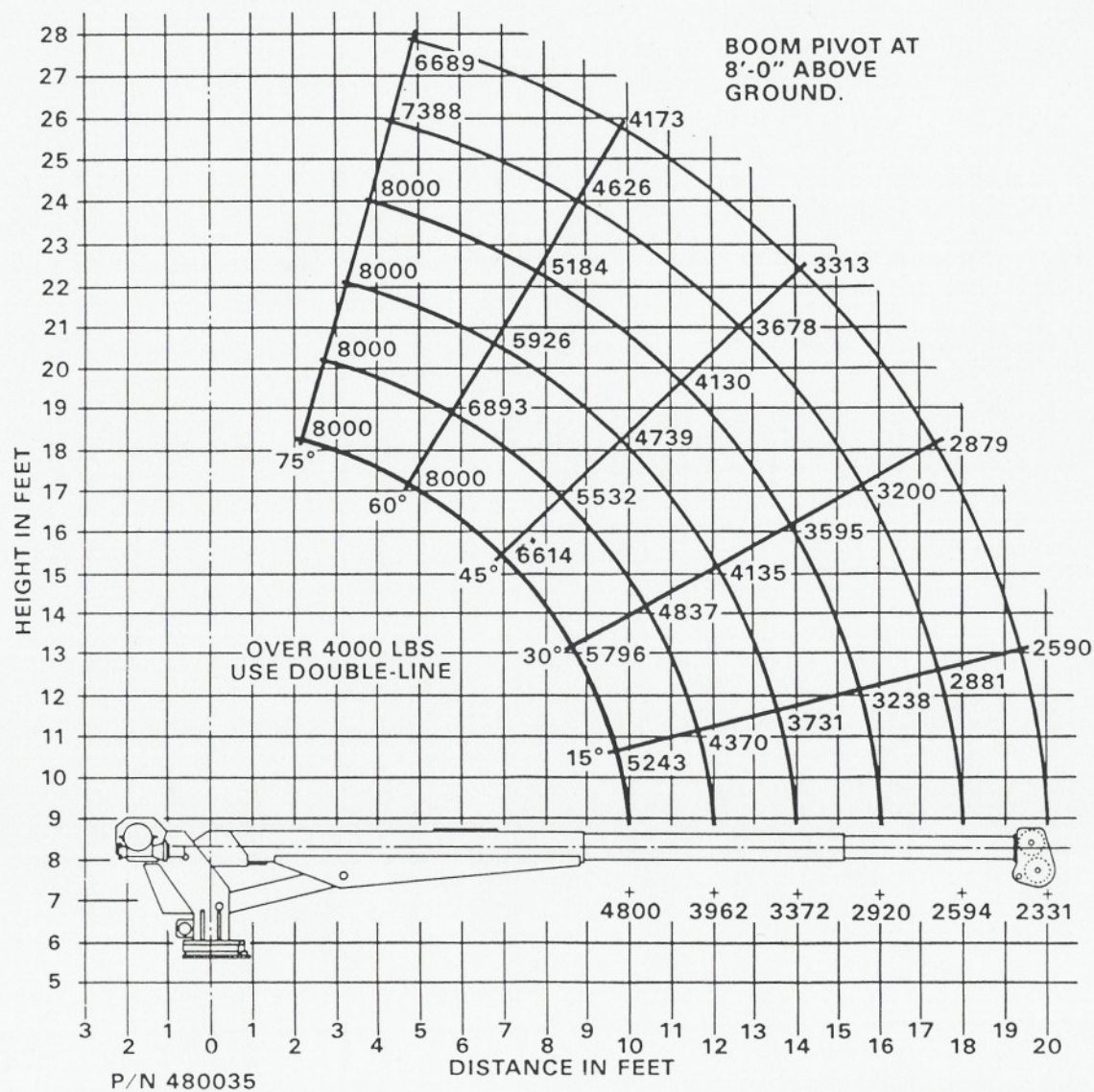
REF. SEE RESERVOIR ASSEMBLY AW-480150 – PAGE 24

1. The crane must receive 8 GPM and 2000 psi. To assure proper flow, install an in-line flow meter between the crane and the reservoir in the return hose or confirm pump (480018) speed at 1000 R.P.M. Proper pressure setting can be achieved by removing the pipe plug (P/N 000209, Item 21 of Hydraulic Assembly AW-016) from the boom cylinder and installing a 0 - 2500 psi pressure gauge. This should be done with the Boom-up cylinder fully retracted.
2. The boom can now be elevated to 75° (full extension) and the pressure on the gauge noted. If the gauge reading is not 2000 psi, adjust the pressure relief (P/N 480156, Item 3 of Reservoir Assy AW-480150) until the correct pressure is registered. Verify this setting by booming down to 60°, then booming up to full cylinder extension and the pressure checked for 2000 psi.
3. Disengage PTO. Remove gauge and re-install the pipe plug. Crane is now ready for operation.

8005H SERIES HYDRAULICS TROUBLESHOOTING

The hydraulic system of the 8005H power version is electrically operated and requires a minimum of 12V for satisfactory performance. The hydraulic pump is bi-rotational with a pressure relief setting of 2000 p.s.i. (REF.) Standard pump speed to be 1000 R.P.M. (Ref. Pump P/N 480018).

PROBLEM	SOLUTION
FLOW PRESENT BUT FUNCTION WILL NOT WORK	Remove valve cover (P/N 480160, Item 7, Page 10) to gain access to the manual override on the end of the valve cartridge (Ref. AW-480184). If the pump is operating, and pushing the manual override in does not operate the selected function, check pump pressure. If the function does operate, check for loose wire, low voltage or bad ground. If the above items check out all right, replace valve cartridge. If the problem is traced to no voltage at the valve cartridge, remove pendant and with the switch engaged check for an open circuit with an ohmmeter. If the circuit is open, check for broken wiring or bad switch.
HYDRAULIC "CHATTER"	When a hydraulic function is engaged and causes the crane to "chatter," check for loose wire, low voltage at valve cartridge, or low pump pressure.
NO FLOW OR CRANE FAILS TO MOVE WHEN OPERATED	Check to maintain adequate oil in reservoir (approx. 8 gal.) by means of sight gauge. Replace if coupling or coupling key is broken. Correct if relieve valve stuck open. Check for pressure line blockage. Make sure pump is working correctly. Also check actuator. Insure no restriction in suction line. Check valve cartridge.
Progressively disconnect fittings at test points to verify existence of flow. Rule: Pumps pump flow only; systems and their loads-resistances produce pressure, up to that limit imposed by lowest pressure limiting device exposed to pressure.	
NO PRESSURE OR TOO LOW PRESSURE	Check to maintain adequate oil in reservoir (approx. 8 gal.) by means of sight gauge. Make sure pressure gauge is functioning correctly. Possible relief hung open. Check for excessive leakage and correct. Check to insure that pressure limit switch is correctly set.
Progressively test circuit points to determine pressure existence.	
TOO HIGH FLOW	Make sure pump size is correct and pump speed is not too fast (1000 R.P.M.). Check or replace flow control. Check components for flow displacements.
TOO HIGH PRESSURE	Make sure pressure limit switch is correctly set.



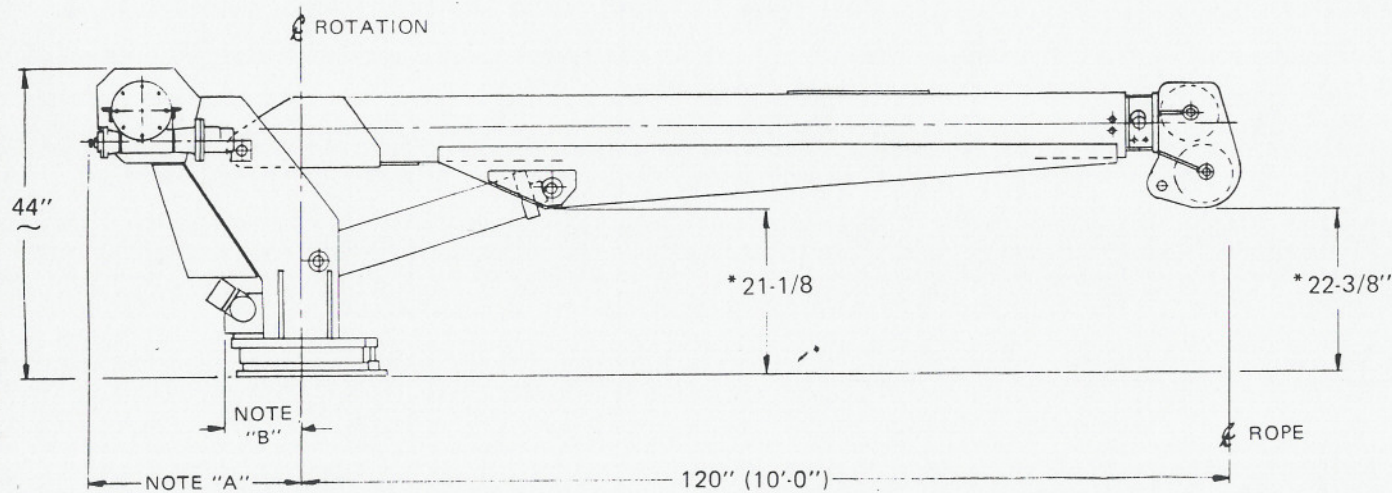
AUTO CRANE COMPANY

P.O. BOX 45548 • TULSA, OKLAHOMA 74145
9260 BROKEN ARROW EXPRESSWAY • 918-627-9475

TITLE
LOAD CHART-8005H

DWG. NO.
AW-480035

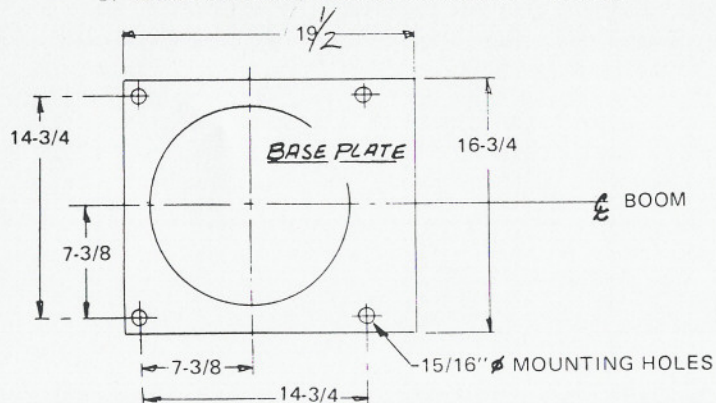
FIXTURE NO.	FINISH NO.	CHG	REVISIONS		
		LTR	DESCRIPTION	DATE	APP'D



NOTE: *DIMENSIONS GIVEN/BOOM AT HORIZONTAL.

- NOTE:
- A. MAX. TURN RADIUS @ HOIST — 28 1/4"
 - B. MAX. TURN RADIUS @ SWING DRIVE — 14-9/16"

SPECIFICATIONS:
 WEIGHT - 1500 LBS.
 OPERATING PRESSURE - 2000 PSI
 OIL FLOW — 8 GAL/MIN.



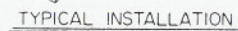
QUANTITY	ITEM	D/S	PART NO.	DESCRIPTION
LIST OF MATERIAL				
UNLESS OTHERWISE NOTED ALL DIMENSIONS ARE IN INCHES. TOLERANCES UNLESS OTHERWISE SPECIFIED.				
ANGLES ± 1/2° .XX ± .40				
FRACTIONAL ± 1/16 .XXX ± .010				
REMOVE ALL BURRS AND SHARP EDGES. DO NOT SCALE THIS DRAWING.				
TOLERANCES NOT SHOWN ABOVE ARE PER ANSI Y14.5 - 1973				
THIS PRINT IS THE PROPERTY OF AUTO CRANE CO. AND MUST NOT BE USED IN ANY MANNER DETRIMENTAL TO THEIR INTERESTS.				
NEXT ASS'Y				
DRAWN BY RICKMAN				
DATE 7-18-84				
CHK'D BY				
DATE				
ENG. BY				
DATE				
TITLE 8005-H DIMENSIONAL				
SCALE NONE				
SIZE B				
DRAWING NO. ENG. 150				
REVISION -				
WEIGHT				
SHEET 1 OF 1				



16	1	999944	INST. CHECKLIST
15	1	040632	WARNING - CYL'S INOPERATIVE
14	1	360034	DECAL-3M-LOGO
13	1	040587	DECAL, LOAD SENSOR
12	1	040634	CAUTION-8 GPM
11	2	040630	DECAL--STAY CLEAR OF LOAD
10	1	040579	DECAL-SIX WORKING RULES
9	1	040580	DECAL-MUST NOT OPERATE UNLESS
8	2	040517	DECAL-STAY CLEAR OF BOOM
7	2	040529	DECAL-ANGER-ELECTRIC
6	2	040624	DECAL-AUTO CRANE
5	8'	040620	STRIPING
4	1	480039	DECAL-ANGLE INDICATOR LEFT
3	1	480038	DECAL-ANGLE INDICATOR RIGHT
2	1	480035	LOAD CHART
1	2	480034	DECAL-3M-8005H

Item	Qty.	Part No.	Description
NTITY		LIST OF MATERIAL	
OTHERWISE NOTED ALL DIMENSIONS ARE IN INCHES. DIMENSIONS LESS UNLESS OTHERWISE NOTED		AUTO CRANE COMPANY P.O. BOX 45548 • TULSA, OKLAHOMA 74145 9280 BROKEN ARROW EXPRESSWAY • 918-627-9475	
1/2"	XX" 40	DRAWN BY RICK RAN DATE 3-6-86 CHECKED BY CHUCK D DATE 5/13/04 ENG. BY BOBBLES DATE 8/10/84	TITLE DECAL LAYOUT 8005H
AL 1/16" XXX" 010 LL BURS AND SHARP NOT SCALE THIS		SCALE ~	SIZE C
NOT SHOWN ABOVE NSI Y14 5 1973		DRAWING NO. AW-480021	REVISION -
IS THE PROPERTY OF AUTO CRANE CO NOT TO BE USED IN ANY MANNER DETRIMENTAL TO THEIR INTERESTS.		WEIGHT	SHEET 1 OF 1

CHG	REVISIONS		
LTR	DESCRIPTION	DATE	APP'D

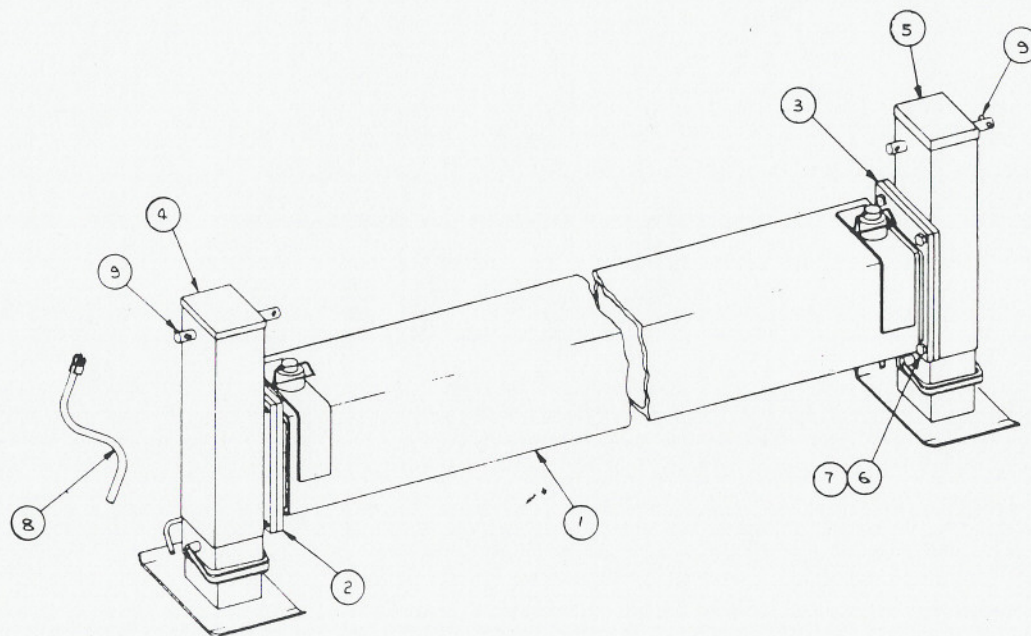


1. WELD MAIN CROSS TUBE TO FRAME EXTENSIONS AND CROSS MEMBER EXTENSIONS.
2. CAUTION: ON HYDRAULIC OUTRIGGERS (REF. P/N-480170), POSITION SO THAT THE WELD OR BRACING DOES NOT INTERFERE WITH HYDRAULIC TUBING OR HOSE HOOK-UP.

QUANTITY	ITEM D/S	PART NO.	DESCRIPTION
UNLESS OTHERWISE NOTED ALL DIMENSIONS ARE IN INCHES			
TOLERANCES UNLESS OTHERWISE SPECIFIED			
ANGLES: 1°			
FRACTIONAL: 1/16 XX-X: 0.05			
REMOVE ALL BURRS AND SHARP EDGES DO NOT SCALE THIS DRAWING			
TOLERANCES NOT SHOWN ABOVE ARE PER AND V.S. 1973			
THIS PRINT IS THE PROPERTY OF AND MUST NOT BE USED IN ANY MANNER DETRIMENTAL TO THEIR INTERESTS			
DRAWN BY		LIST OF MATERIAL	
CHECKED BY		AUTO CRANE COMPANY	
DATE		1000 1/2 BOX CAR	
DATE		8200 BROOKEN ARROW EXPRESSWAY • 910-87-8475	
TDC BY		TITLE	
SCALE		INSTALLATION - OUTRIGGERS 8005SH	
SIZE D		DRAWING NO.	
WEIGHT		AW-018	
SHEET		OF	

FIXTURE NO.	FINISH NO.

CHG LTR	REVISIONS		
	DESCRIPTION	DATE	APP'D



NOTE:
INSTALL ITEM 9 (PIN) WITH
1/2 INCH EACH SIDE OF
CRANK SHAFT.

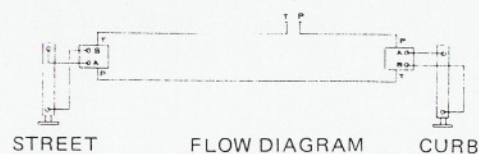
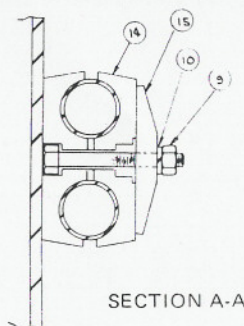
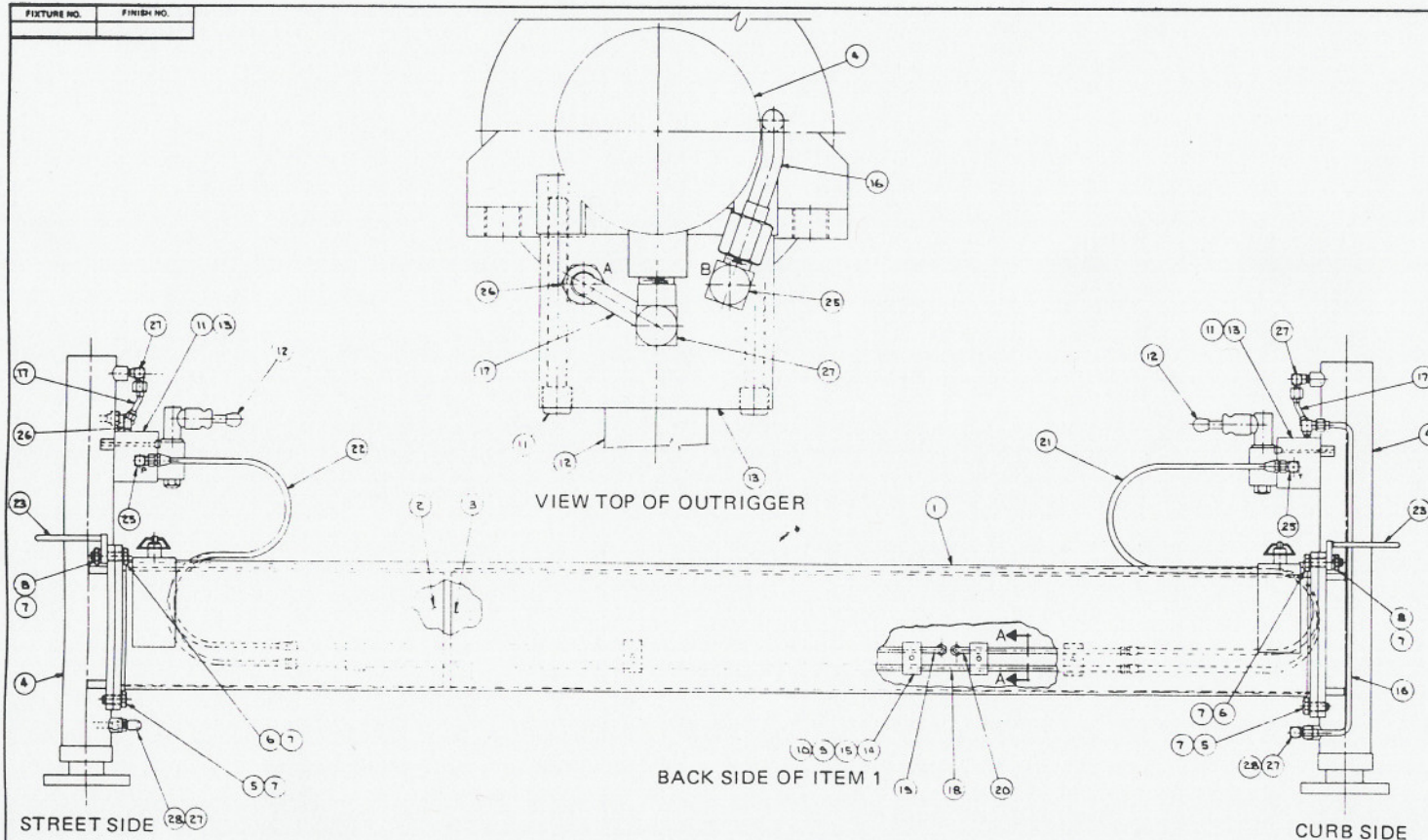
9	2	480162	PIN, ROLL 3/8 X 2" LG.
8	1	480164	HANDLE CRANK
7	8	023800	WASHER, SP.LK. 5/8
6	8	012203	SCREW HX.HD. 5/8 NF x 1-1/4" LG.
5	1	480169	OUTRIGGER, MANUAL WELDMENT(R)
4	1	480168	OUTRIGGER, MANUAL WELDMENT(L)
3	1	480176	SLIDE, CURB SIDE
2	1	480174	SLIDE, STREET SIDE
1	1	480171	MAIN CROSS TUBE ASS'Y

Item	Qty.	Part No.	Description
------	------	----------	-------------

QUANTITY	UNLESS OTHERWISE NOTED ALL DIMENSIONS ARE IN INCHES. TOLERANCES UNLESS OTHERWISE SPECIFIED:		DRAWN BY RYCKMAN		LIST OF MATERIAL	
ANGLES ± 1/2°	XX ±	DATE 9-5-84	TITLE AUTO CRANE COMPANY			
FRACTIONAL ± 1/16	XXX ± .010	CHK'D BY DC	P.O. BOX 45548 • TULSA, OKLAHOMA 74145			
REMOVE ALL BURRS AND SHARP EDGES. DO NOT SCALE THIS DRAWING.		DATE 9/10/84	9260 BROKEN ARROW EXPRESSWAY • 918-627-9475			
TOLERANCES NOT SHOWN ABOVE ARE PER ANSI Y14.5-1973		ENG. BY NOBLES	OUTRIGGER ASSEMBLY (MANUAL)			
THIS PRINT IS THE PROPERTY OF AUTO CRANE CO. AND MUST NOT BE USED IN ANY MANNER DETRIMENTAL TO THEIR INTERESTS.		DATE 9/10/84	SCALE ~	SIZE C	DRAWING NO. AW-480165	REVISION -
NEXT ASS'Y			WEIGHT		SHEET <u>1</u> OF <u>1</u>	

FIGURE NO.	FINISH NO.

CHG	REVISIONS	DATE	APPD
LTR	DESCRIPTION		



NOTE:

THIS COMPLETE ASS'Y TO BE PRESSURE CHECKED @ 2000 PSI.

- (a) MANUAL VALVE LEVER - PUSH DOWN TO EXTEND CYL.
- (b) MANUAL VALVE LEVER - PULL UP TO RETRACT CYL.

QUANTITY	ITEM DIS	PART NO.	DESCRIPTION
LIST OF MATERIAL			
UNLESS OTHERWISE NOTED ALL DIMENSIONS ARE IN INCHES. TOLERANCES UNLESS OTHERWISE SPECIFIED:			
ANGLES: 1/2"	XX 1: 40		
FRACTIONAL: 1/16	XX 1: 20		
REMOVE ALL BURRS AND SHARP EDGES. DO NOT SCALE THIS DRAWING.			
TOLERANCES NOT SHOWN ABOVE ARE PER ANSI Y14.5 - 1973			
THIS PRINT IS THE PROPERTY OF AUTO CRANE CO. AND MUST NOT BE USED IN ANY MANNER DETRIMENTAL TO THEIR INTERESTS.			
NEXT ASS'Y			

AUTO CRANE COMPANY

P.O. BOX 46048 • TULSA, OKLAHOMA 74146
8700 BROOKER AVENUE • TULSA, OKLAHOMA 74146

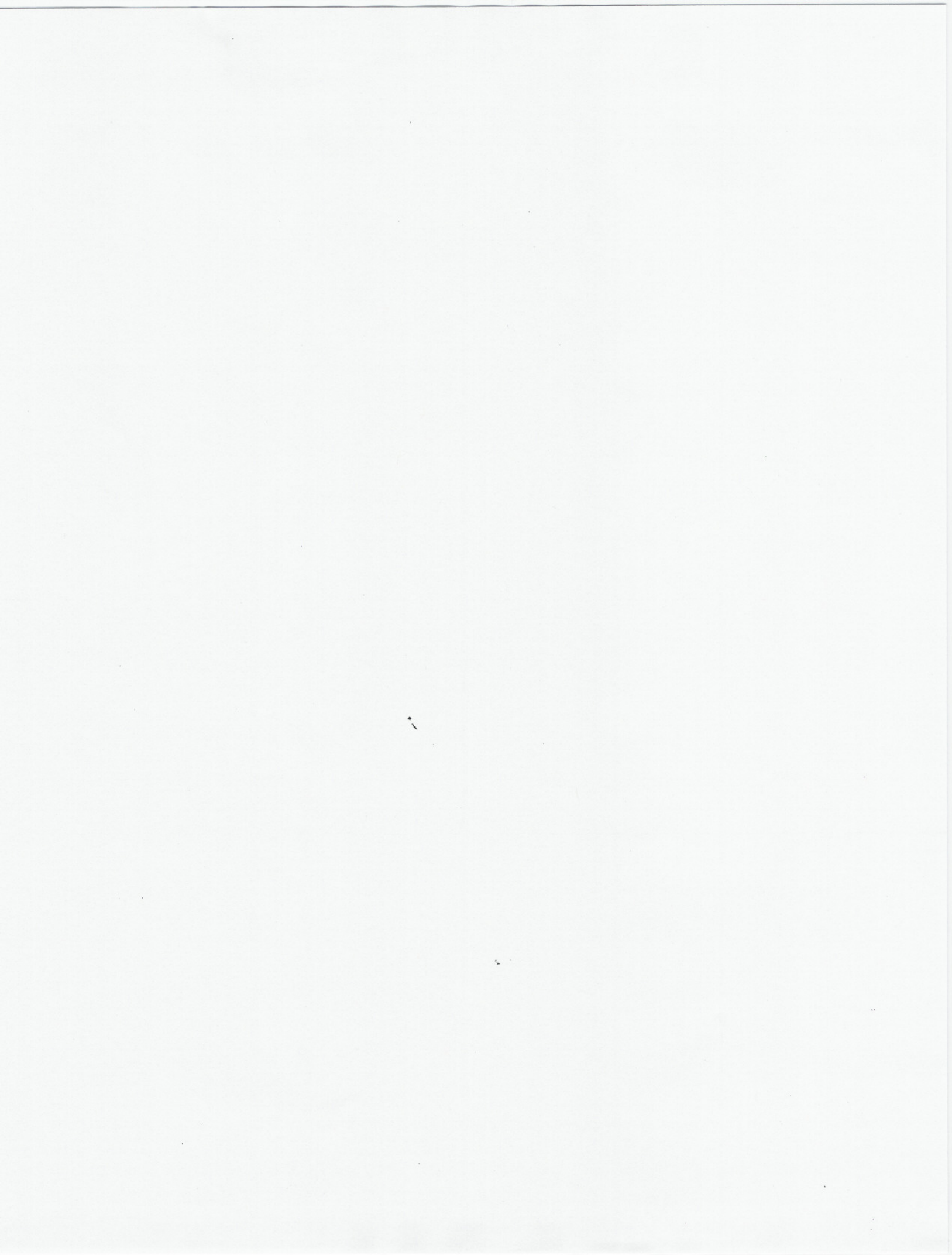
TITLE: **OUTRIGGER ASS'Y (HYDRAULIC)**

SCALE: **K** SIZE: **D** DRAWING NO.: **AW-480170** REVISION: **1**

WEIGHT: **1.1** SHEET: **1** OF **1**

OUTRIGGER ASSEMBLY (HYDRAULIC) - AW-480170

ITEM	QTY.	PART NO.	DESCRIPTION
1	1	480171	MAIN CROSS TUBE ASS'Y
2	1	480174	SLIDE, STREET SIDE
3	1	480176	SLIDE, CURB
4	2	480017	CYLINDER
5	4	012203	SCREW HX.HD. 5/8 NF x 1-1/4" LG.
6	4	013506	SCREW HX.HD. 5/8 NF x 2-1/4" LG.
7	12	023800	WASHER, SPLK 5/8
8	4	018302	NUT, HX. 5/8 NF
9	5	016500	NUT, HX. 5/16 NC
10	5	020600	WASHER, SP LK 5/16
11	4	003905	SCREW, SC.HD. 5/16-24 x 3-1/4" LG.
12	2	480230	VALVE, MANUAL - OUTRIGGER
13	2	480231	MANIFOLD - OUTRIGGER
14	5	480232	CLAMP HALVES
15	5	480233	PLATE, TWIN COVER
16	2	480220	TUBE ASS'Y - LEG
17	2	480221	TUBE ASS'Y - LEG
18	1	480222	TUBE ASS'Y
19	1	480223	TUBE ASS'Y
20	1	480224	TUBE ASS'Y
21	2	480225	HOSE ASS'Y O.R. - CURB
22	2	480226	HOSE ASS'Y O.R. - STREET
23	2	480227	HANDLE ASS'Y
24	1	480235	KIT, OUTRIGGER INSTALLATION
25	6	241343	ELL 90° #6 O-RING/# 6 JIC STD
26	2	480195	ELL 45° #6 O-RING/#6 JIC
27	4	200892	ELL 90° #6 PIPE/#6 JIC
28	2	360048	ELL 90° #6 PIPE M/#6 PIPE FM
29	1	480014	SEAL KIT (For 480017 - O.R. Cyl.)





AUTO CRANE COMPANY

P. O. BOX 581510 • TULSA, OKLAHOMA 74158

Limited Warranty

Auto Crane Company warrants to Consumer for a period of six (6) months from date of purchase, each new Auto Crane product sold by it to be free, under normal use and service, from defects in material and workmanship. Such warranty is expressly limited to the replacement or the repair of parts without charge exclusive of component accessories, which are returned, with all transportation charges prepaid, to Auto Crane Company's factory in Tulsa, Oklahoma, and are disclosed, upon the inspection and to the satisfaction of Auto Crane Company to be thus defective.

This warranty does not obligate Auto Crane Company to bear the cost of labor or parts or transportation charges in connection therewith when the replacement or repair of parts claimed to be defective is performed by a party other than Auto Crane Company; nor shall this warranty apply to an Auto Crane product upon which any alterations or repairs, other than normal maintenance, have been made without the approval of Auto Crane Company.

Auto Crane Company shall in no event be liable for consequential damages or contingent liabilities arising out of the failure of any Auto Crane product or parts to operate properly.

Auto Crane Company makes no warranty in respect to component accessories, same being subject to the warranties of their respective manufacturers.

AUTO CRANE COMPANY IS UNDER NO OBLIGATION TO EXTEND THIS WARRANTY TO ANY CUSTOMER FOR WHICH AN AUTO CRANE WARRANTY REGISTRATION CARD HAS NOT BEEN COMPLETED AND MAILED TO AUTO CRANE COMPANY WITHIN FIFTEEN (15) DAYS AFTER DATE OF PURCHASE.



AUTO CRANE SERVICE POLICY



Auto Crane's main service point is Tulsa, Oklahoma.
Other service points staffed by trained factory personnel.

REQUESTS FOR SERVICE

Requests for service and parts on Auto Crane products may be made with your nearest Auto Crane distributor or by calling Auto Crane Company at 918-438-2760.

PARTS

Parts orders may be placed through any authorized Auto Crane distributor or dealer. Parts returned to the factory by an authorized Auto Crane distributor or dealer for warranty adjustment, are to be prepaid. If, upon inspection at our plant, such part or parts are deemed to be defective, credit will be issued.

Authority to return special parts not carried in current stocks, may be granted by Auto Crane Company with credit being determined at that time. **PARTS MAY NOT BE RETURNED TO THE FACTORY FOR CREDIT WITHOUT THE EXPRESS AUTHORITY OF AUTO CRANE COMPANY.**

ALL returned parts, when authorized by Auto Crane Company must have transportation charges prepaid.

FACTORY SERVICE TRAVEL EXPENSE

Regular Field Service Vehicle — 0.30 per mile.
Air Lines — Regular Coach Fare when Available.
Other transportation prices upon application.

EXPENSES

All expenses incurred by factory serviceman while on customer's service job will be based upon the total of such expense to Auto Crane, except \$50.00 per man per day will be charged when serviceman remains away from home base overnight.

OVERTIME RATES

Overtime is all time other than regular time and holidays. Overtime and holiday rate is one and a half times regular time rates.

Regular time rates apply between the hours of 8:00 AM and 5:00 PM Monday through Friday, except on holidays.

Holidays are New Year's Day, Good Friday, Memorial Day, Independence Day, Labor Day, Thanksgiving Day, Friday after Thanksgiving Day, Christmas Eve, Christmas Day.

MISCELLANEOUS SERVICE CHARGES

Any miscellaneous expenses incurred in the repair of the unit, such as machining or welding work not performed by the serviceman — whether in the field or at a shop (other than Auto Crane's) — will be charged to the customer. Customer may, however, have such work done in their shops or on their own order if they so desire.

Special work desired by the customer such as changing a unit over from one truck to another, installing new accessories on old equipment, adapting booms to unit not originally constructed, may be arranged for and charges will be based on the nature of the work, the amount of engineering involved, etc.

REGULAR SHOP AND FIELD RATES

Shop rate	\$30.00 per hour
Field rate, experienced Serviceman	\$30.00 per hour

NOTE: Service rates start when Auto Crane's employee is assigned to the job or field activity pursuant to the customer's service request. Rates subject to change without notice.

(Rates Subject to Change Without Notice)

SERVICE PHONES

For Service or Parts, call the Service Department

Day-Time Calls — Local 438-2760
Day-Time Calls — Long Distance 918-438-2760

For fast efficient service call Auto Crane Company, (Mail address: P. O. Box 581510, Tulsa, Oklahoma 74158), or your nearest Auto Crane Distributor or Dealer.
