



Technical Manual

PERSONNEL BASKET

PBAF-350 Aluminum/Folding



Serial No. _____

(PATENT PENDING)

605001515-0318-A

Mailing Address:
P.O. Box 580697
Tulsa, OK 74158

Phone: 1-800-777-2760
Fax: (918) 269-6688
<http://www.autocrane.com>

Physical Address:
4707 N. Mingo Rd.
Tulsa, OK 74117-5904

At the time of publishing, this manual is accurate to the best of our knowledge. Auto Crane reserves the right to change any or all items, components, and parts, necessary for any reason. This right does not obligate Auto Crane to immediately update the manual. If in doubt, please call your local Auto Crane distributor for the most up-to-date information.

Auto Crane issues a limited warranty with each unit sold. See warranty pages at the end of the manual.

Table of Contents

| SECTION | | PAGE |
|-----------|---|-----------|
| 1 | Safety Tips And Precautions | 4 |
| 2 | Introduction | 6 |
| 3 | General Specifications | 7 |
| | 3.1 Dimensions | 7 |
| | 3.2 Capacity | 7 |
| 4 | Qualifications and Operating Practices | 8 |
| 5 | Personnel Basket Deployment | 9 |
| 6 | Maintenance and Inspection | 17 |
| | 6.1 General | 17 |
| | 6.2 Frequency | 17 |
| | 6.3 Test Procedure | 17 |
| | 6.4 Records | 18 |
| | 6.5 Adjustments and Repairs | 18 |
| | 6.6 Modifications | 18 |
| | 6.7 Brake Test/Adjustment | 18 |
| 7 | Personnel Basket Storage Installation | 20 |
| 8 | Adapter Kit Installation | 22 |
| 9 | General Dimensions | 24 |
| 10 | Decal Layout | 27 |
| 11 | General Assembly | 29 |
| 12 | Folding Alum. Assembly | 30 |
| 13 | Floor Assembly | 35 |
| 14 | Stalk Assembly | 38 |
| 15 | Crown Adapter Kit | 43 |
| 16 | Storage Kit | 44 |

1 Safety Tips and Precautions

DANGER

Indicates a hazardous situation which, if not avoided, will result in death or serious injury.

WARNING

Indicates a hazardous situation which, if not avoided, could result in death or serious injury.

CAUTION

Indicates a hazardous situation which, if not avoided, could result in minor or moderate injury.

NOTICE

Indicates information considered important, but not hazard-related.

NOTICE

Operators are required to read manual prior to operation and be familiar with crane operation.

WARNING

Auto Crane Personnel Basket is to only be used in conjunction with Auto Crane brand cranes.

WARNING

Do not weld, modify, or use unauthorized components on any Auto Crane unit! This will void any warranty or liability. Also failure of the personnel basket may result.

WARNING

Personnel platforms not to be used in winds in excess of 20 mph (32.2 km/h) at the hoisted platform height, electric storms, or other adverse weather conditions that could affect the safety of personnel.

WARNING

Do not allow the total weight of the lifted load, including rigging, platform, personnel, tools, and material, to exceed 50% of the crane's load capacity.

WARNING

Perform a trial lift prior to lifting personnel with the platform on each shift and after any change of setup location. These lifts shall be used to ascertain that the personnel basket setup and configuration is correct, load capacities are adequate, and no hazardous interferences exist and to further demonstrate the operator's competence. For rail-mounted cranes where travel of the crane is required during personnel lifting, the trial lift shall include all required travel of the crane.

WARNING

Do not lift any other loads, on any other load lines, while conducting a personnel lift.

WARNING

Have audible and visual alert devices in the platform for use in an emergency (i.e., air horns or strobe lights).

Safety Tips and Precautions 1

DANGER

Operating the basket without the locking pin engaged and secured may result in serious injury or death.

WARNING

Maximum lifting capacity of 350 lbs is not to be exceeded while operator is inside basket. This includes the operator along with any tools, parts, and equipment.

WARNING

Do not operate personnel basket without all proper decals in place and legible.

WARNING

Do not stand, sit on, or work from the top or intermediate rail, or use any other device to enhance vertical height working capability. Operator is to work from basket floor while inside personnel basket.

WARNING

Brake must be in ENGAGED position when personnel basket is stopped, and prior to beginning of work.

WARNING

Brake should be in the DISENGAGED or dampened position when moving the personnel basket in order to lessen the possibility for a non level standing surface.

WARNING

Basket personnel must wear a safety harness with a lanyard attached to anchor point provided. Personnel basket doors must be securely latched.

DANGER

Do not use crane or basket within 10 feet of electrical lines carrying up to 50,000 volts, one foot additional clearance is required for every additional 30,000 volts or less.

2 Introduction

NOTICE

Keep this manual with the personnel basket at all times.

Auto Crane products are designed to provide many years of safe, trouble-free, dependable service when properly used and maintained.

To assist you in obtaining the best service from your personnel basket and to avoid untimely failure, this manual provides the following operating and service instructions. It is specifically recommended that all operating and service personnel consider this manual as mandatory material for reading and study before operating or servicing Auto Crane products. It is highly recommended that equipment, equipment managers, and supervisors also read this manual.

For your convenience, the overall dimensions of the personnel basket are included on the General Dimension Drawing.

Auto Crane Company issues a limited warranty certificate with each unit sold. See last page for warranty.

It is Auto Crane Company policy to handle all warranty claims we receive as promptly as possible. If a warranty claim involves discrepant material or workmanship, Auto Crane will take immediate corrective action. It is understandable that Auto Crane cannot assume responsibility of liability when it is obvious that our products have been abused, misused, overloaded, or otherwise damaged by inexperienced persons trying to operate the equipment without reading the manual.

NOTICE

Auto Crane will not assume responsibility or liability for any modifications or changes made to unit, or installation of component parts without written authorization.

Auto Crane maintains a strong distributor network and a knowledgeable Customer Service Department. In most cases, an equipment problem is solved via phone conversation with our customer service department. The customer service department also has the ability to bring a local distributor, a regional sales manager, or a factory serviceman into the solution of an equipment problem.

Should you require any assistance not given in this manual, we recommend that you consult your nearest Auto Crane Distributor. Our distributors sell authorized parts and have service departments that can solve almost any needed repair. This manual does not cover all maintenance, operating, or repair instructions pertinent to all possible situations.

If you require additional information, please contact Auto Crane at the following telephone number: **1-800-777-2760**

The information contained in this manual is in effect at the time of this printing. Auto Crane reserves the right to update this material without notice or obligation.

Auto Crane's extensive Research and Development Program allows our customers to use the best equipment on the market. Our Engineering Staff and our knowledgeable sales people are always available to our customers in solving crane and winch-type application problems. When in doubt, call the Auto Crane factory.

3.1 DIMENSIONS

- Weight: 215 lbs
- Folded: 47-1/2" x 37-7/8" x 14-5/8"
- Unfolded: 45-7/8" x 30-5/8" x 31-3/4"

3.2 CAPACITY

- 350 lbs
- Maximum Capacity: 1 person

4 Qualifications and Operating Practices

NOTICE

Reference all applicable standards for complete qualification requirements.

Vehicle must be parked and outriggers must be fully deployed before installation and operation of the basket.

Operate all controls slowly for smooth basket motion. Verify controls return to neutral position after operation

Never operate the basket over ground personnel.

Never move vehicle until basket, crane, and outriggers are properly stowed and secure.

Never drop tools or materials from the basket

Store transmitter in holder when not in use.

Personnel platform not to be used in winds in excess of 20 mph (32.2 km/h) at the hoisted platform height, electric storms, or other adverse weather conditions that could affect the safety of personnel.

Do not allow the total weight of the lifted load, including rigging, platform, personnel, tools, and material, to exceed 50% of the crane's weight capacity.

Perform a trial lift prior to lifting personnel with the platform on each shift and after any change of setup location. These lifts shall be used to ascertain that the personnel basket setup and configuration is correct, load capacities are adequate, and no hazardous interferences exist and to further demonstrate the operator's competence. For rail-mounted cranes where travel of the crane is required during personnel lifting, the trial lift shall include all required travel of the crane.

Do not lift any other loads, on any other load lines, while conducting a personnel lift.

Have audible and visual alert devices in the platform for use in an emergency (i.e., air horns or strobe lights).

Keep all body parts inside the platform during raising, lowering, and positioning unless performing the duties of a designated signal person.

NOTICE

Highly recommended disabling hoist or running single axis during personnel basket operation.

Personnel Basket Deployment 5

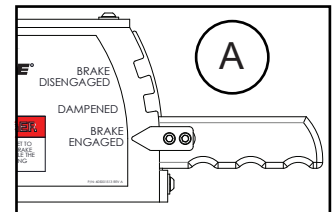
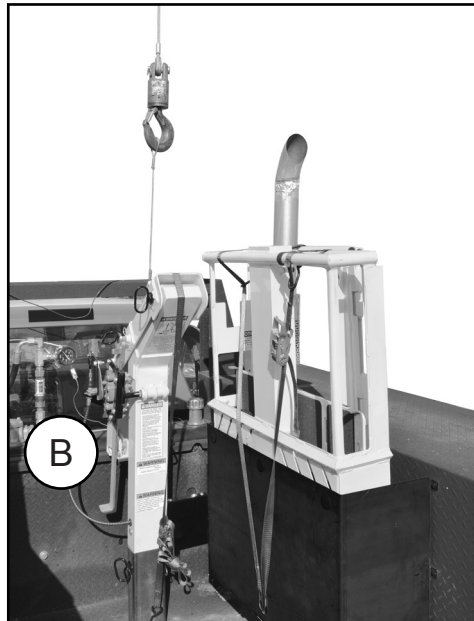
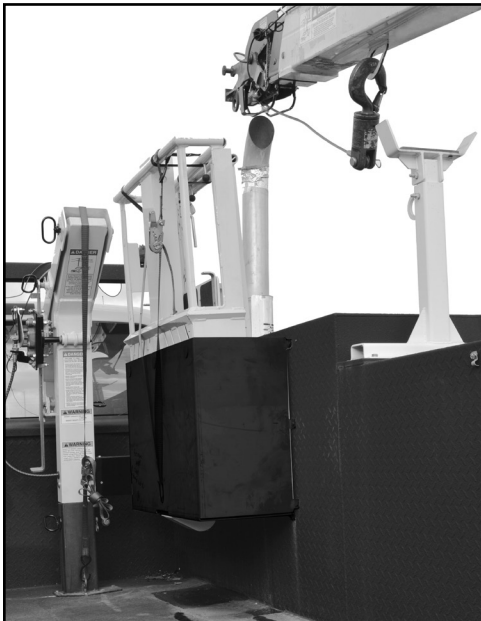
NOTICE

Reference crane manual for proper outrigger deployment.

1. Deploy outriggers and level out truck/crane.



2. Move crane above the top of the upper stalk and lower cable to reach the upper stalk lanyard. Tighten the slack out of the lanyard and make sure the (A) brake is engaged. (B) Remove adaptor locking pin from stalk.

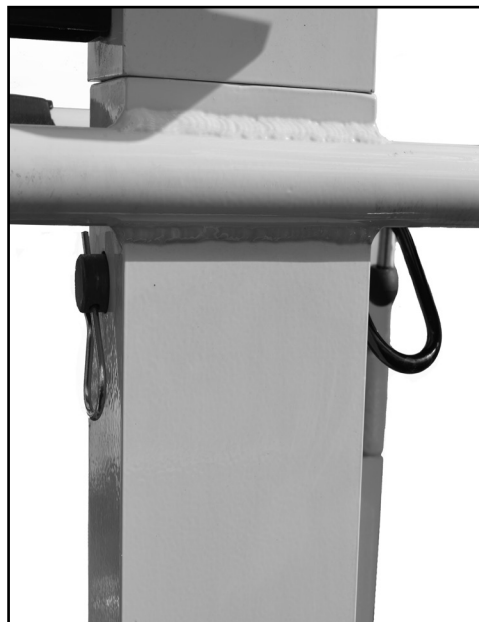
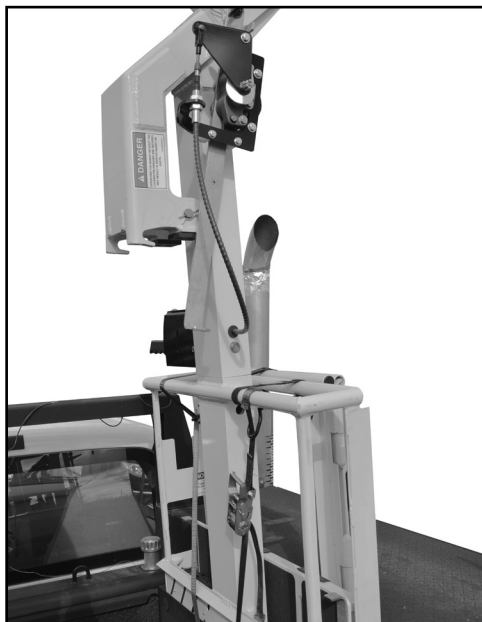


5 Personnel Basket Deployment

3. Remove the stowing ratchet strap and retaining pin from stalk assembly. Lift upper stalk out of stalk storage.



4. Attach stalk assembly to personnel basket with retaining pin.



Personnel Basket Deployment 5

5. Unstrap ratchet strap holding basket and lift from basket storage. Rotate crane and position outside bed area to proceed with deployment. Extend boom a minimum of four feet.

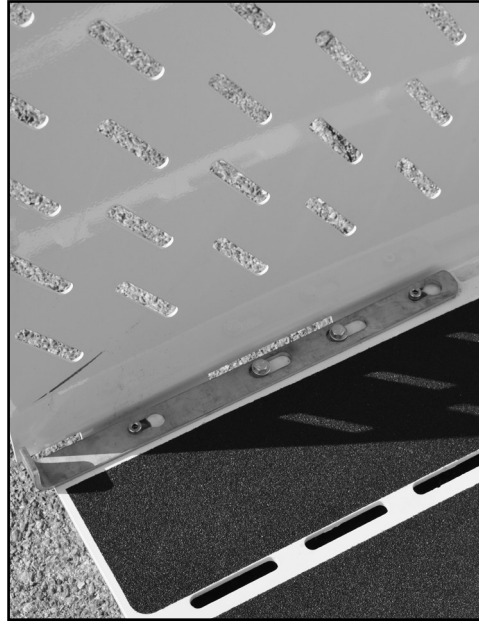


6. Lower basket approximately one foot above ground level. Unstrap velcro straps, unfold both sides, and lower floor slowly. Do not allow floor to fall under its own weight.



5 Personnel Basket Deployment

7. Lower basket onto ground, lock side panel locking bars, and lock floor with rail locks.

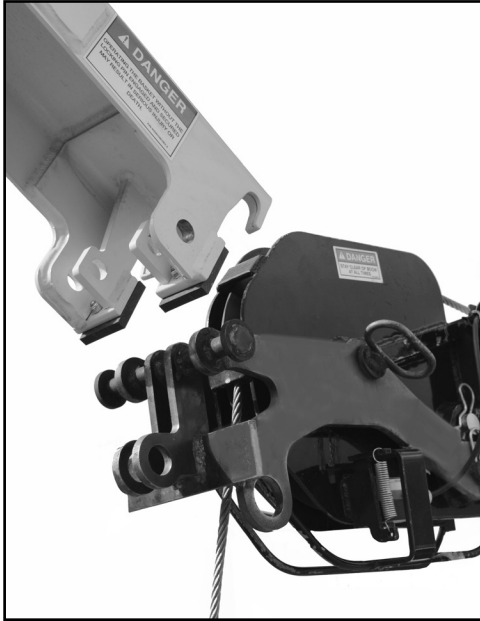


8. Close the door and insert safety pin. Disengage brake and raise stalk as high as possible, while keeping basket on ground, and engage brake. Lower cable and disconnect lanyard from crane.

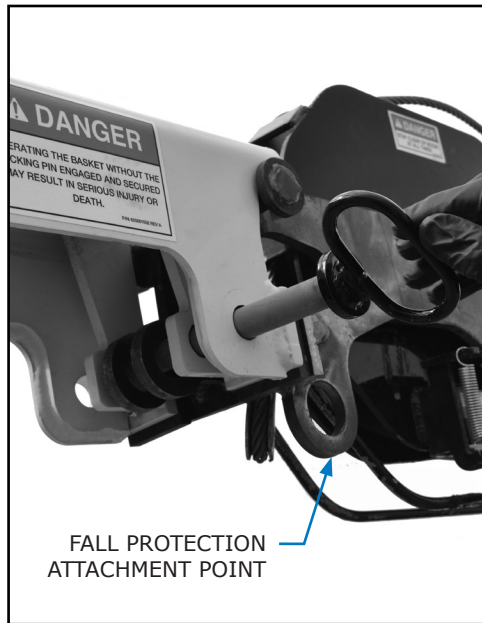


Personnel Basket Deployment 5

9. Align fixed pin on adapter with slots on stalk. Fully engage adapter with stalk.



10. Disengage brake and remove retaining pin from stalk/basket and remove stalk assembly from basket. Retract the boom and then lower to a workable height and install adapter locking pin into crown adapter.



5 Personnel Basket Deployment

11. Retract and lower crane to bottom. Pull sheave pin and remove sheave.



12. Retract cable and attach to cable stow anchor. Reinstall sheave and pin.



Personnel Basket Deployment 5

15. Reinstall stalk assembly into basket and reinstall stalk retaining pin.



16. Personnel basket setup complete. Place transmitter into transmitter storage when not in use.



NOTICE

Personnel Basket stowage will follow deployment instructions in reverse.

6.1 General

All equipment used in the lifting of personnel shall be inspected, tested, and maintained to protect against failure during lifting operations. All inspections shall be performed by a qualified operator. Any deficiencies identified shall be examined and a determination made as to whether they constitute a hazard.

6.2 Frequency

1. Initial Inspection:
 - A. Prior to initial use and at each new job site, all platforms shall be inspected to verify compliance with applicable provisions.
2. Regular Inspection:
 - A. Frequent
 1. The personnel basket, suspension system, attachment points, and any personnel basket motion controls shall be inspected at least once each day before use. The inspection is to identify conditions as potentially creating a hazardous operating condition. Any conditions found that constitute a hazard shall be corrected prior to lifting personnel.
 - B. Periodic
 1. At least once every 12 months, a periodic inspection of the personnel basket shall be performed. A personnel basket that has been out of service for 12 or more consecutive months shall receive a periodic inspection prior to use.
 - C. Records
 1. For frequent inspections, dated records for the personnel basket shall be made and kept by the personnel basket operator for the duration of the personnel lift operation.
 2. For periodic inspections, dated records for the personnel basket shall be kept by the personnel basket operator. The last periodic inspection shall be kept with the personnel basket and available for review.

NOTICE

Reference Appendix II at back of manual for pre-lift inspection check list.

6.3 Test Procedure

1. At each new job site, prior to hoisting people in the personnel platform, the platform and rigging shall be proof tested to 125% of the platform's rating. With the proof test load evenly distributed in the platform, the platform shall be hoisted and held in a suspended position for not less than 5 minutes.
2. Any damage revealed by the inspection shall be corrected and another proof test conducted.
3. After any approved structural repair or modification, a platform shall be proof tested to 150% of the platform's rating. Failure to obtain approved repair or modification may result in injury or death and will result in voiding warranty.

6 Maintenance and Inspection

6.4 Records

The record of the most recent proof testing shall be maintained at the job site.

The platform owner shall maintain records of any repairs to, or replacements of, the structural components of the platform.

6.5 Adjustments and Repairs

1. Any hazardous condition disclosed by any inspection shall be corrected before use of the platform is resumed. Adjustments and repairs shall be accomplished by designated personnel.
2. Adjustments shall provide for correct functioning of components.
3. Replacement parts used or repairs made shall be equal to or exceed the original equipment specification.
4. Any adjustment to braking system shall be done by a qualified operator.

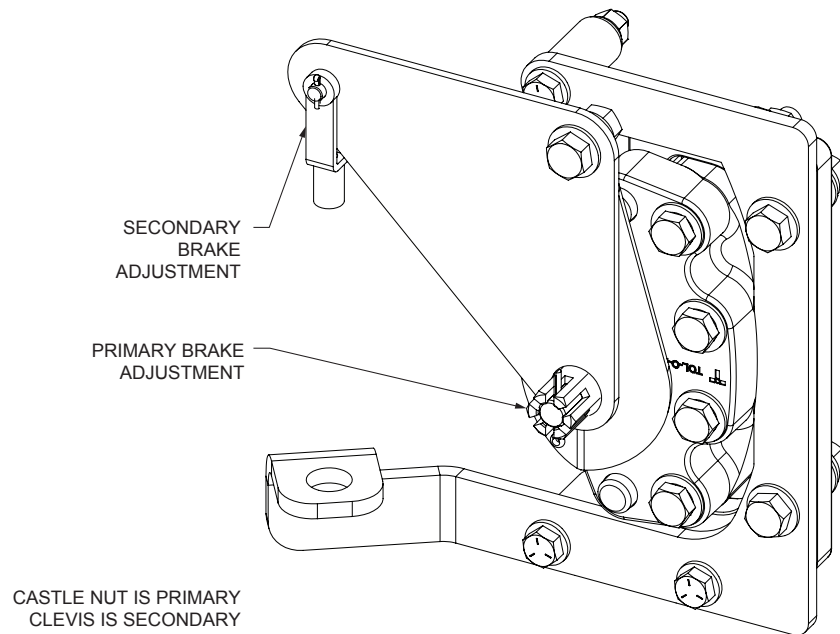
6.6 Modifications

Only modifications approved in writing by the manufacturer shall be accomplished.

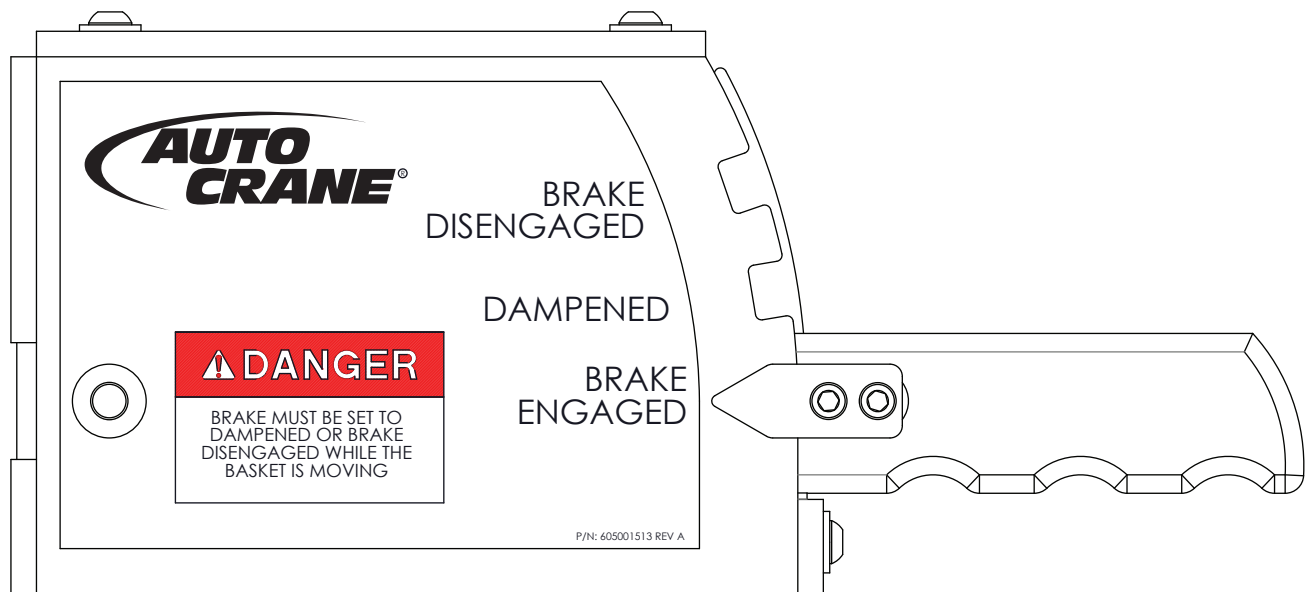
6.7 Brake Test/Adjustment

1. If brake will not hold load:
 - A. Adjust castle nut first by removing the cotter pin first, and then turning the castle nut clockwise one flat.
 - B. Reinstall cotter pin and retest brake operation by placing test weight in basket, pushing basket off of level, and setting brake to ON position.
2. If brake holds load:
 - A. Carefully bring basket back to level.
3. If brake does not hold load:
 - A. The castle nut adjustment can be performed again, and/or the clevis can be unpinned from the lever and turned clockwise to increase brake force.
4. After load holding has been established:
 - A. Place brake in dampened position.
 - B. Lift and lower basket to determine dampening level.
5. If dampening level requires adjustment:
 - A. The clevis can be unpinned and turned to increase/decrease brake force.
 - B. Repeat until dampening level is acceptable to operator.

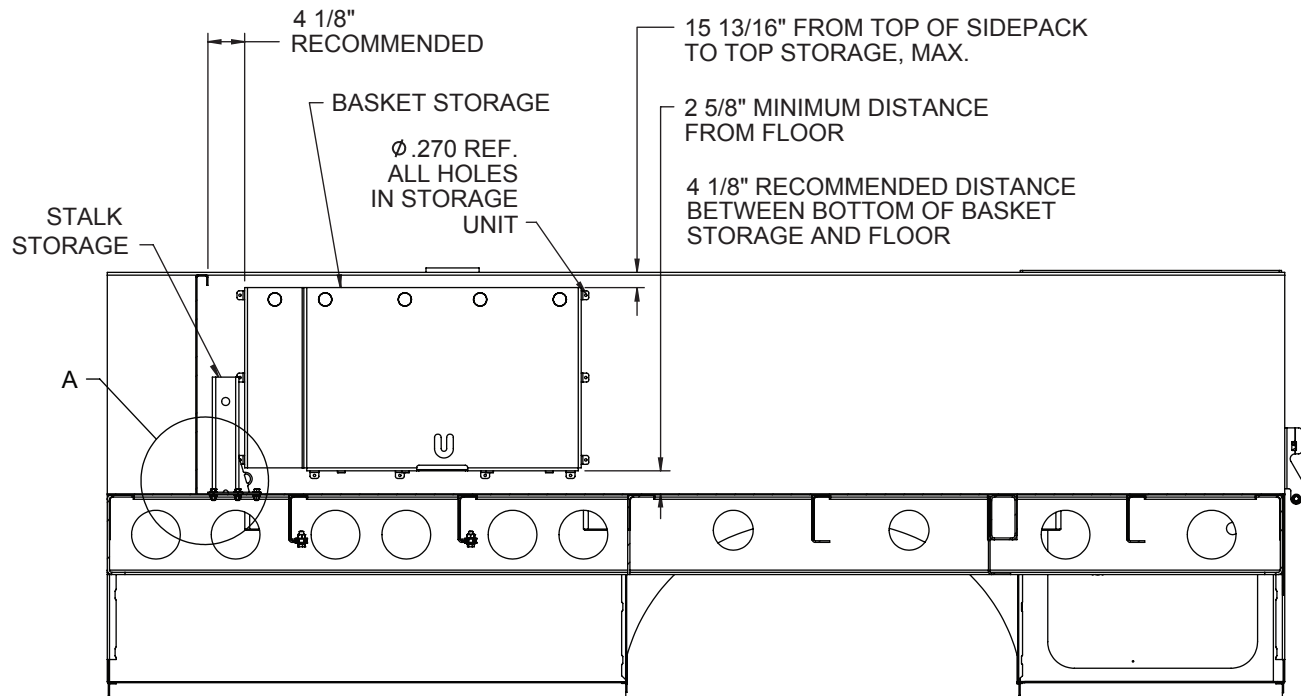
Brake Adjustment



Brake Function Diagram



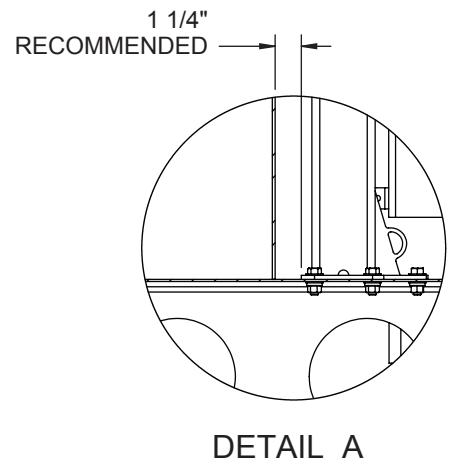
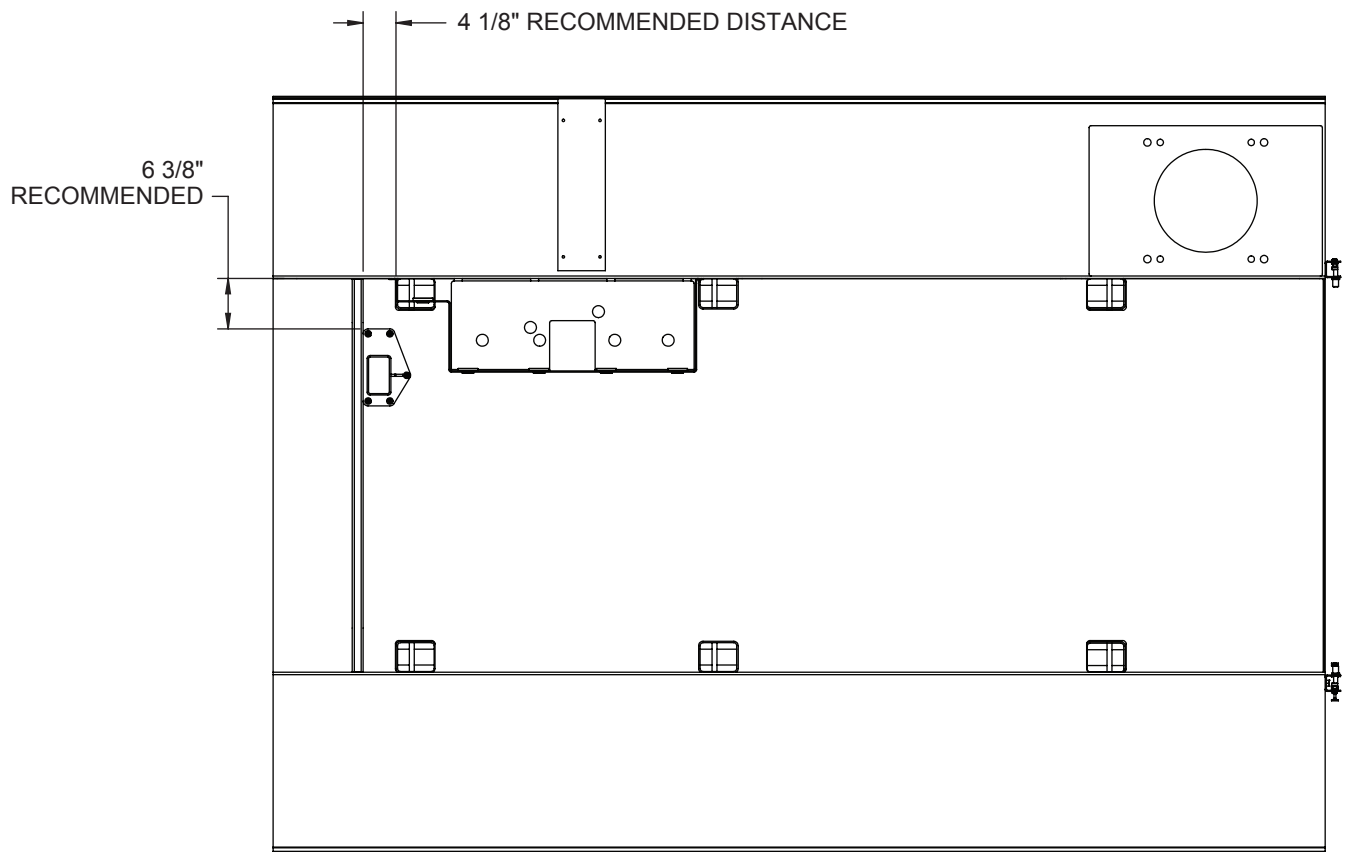
7 Personnel Basket Storage Installation



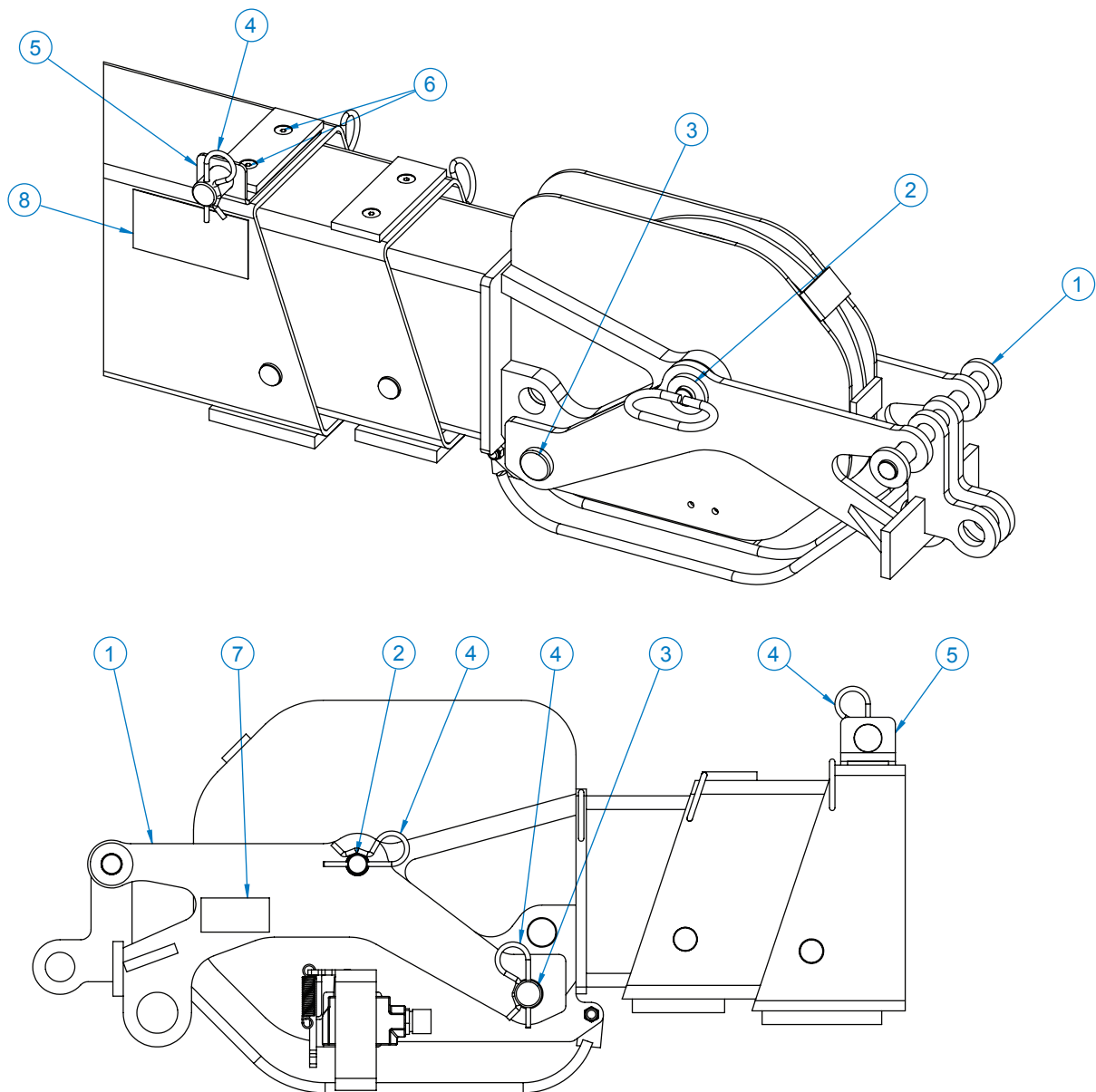
1. Basket storage to be placed on sidepack, minimum of 2-5/8" between bottom of unit and floor.
2. Once desired location is found, temporarily hold basket storage to sidepack and determine if any attachment point holes will interfere with structural members and adjust accordingly.
3. Using basket storage as template, transfer hole pattern to sidepack and drill 0.270" Holes to accept the hardware provided.
4. After holes have been drilled, seal around holes and attach basket storage with supplied hardware.

The stalk storage should be placed on the floor of the body, and used as a pattern to transfer its mounting hole pattern. It should be determined prior to drilling if any of the holes will interfere with existing equipment underneath the floor. Once this determination has been made, drill 0.400" holes into the floor. Seal around holes in floor and mount stalk storage with provided hardware.

Personnel Basket Storage Installation 7

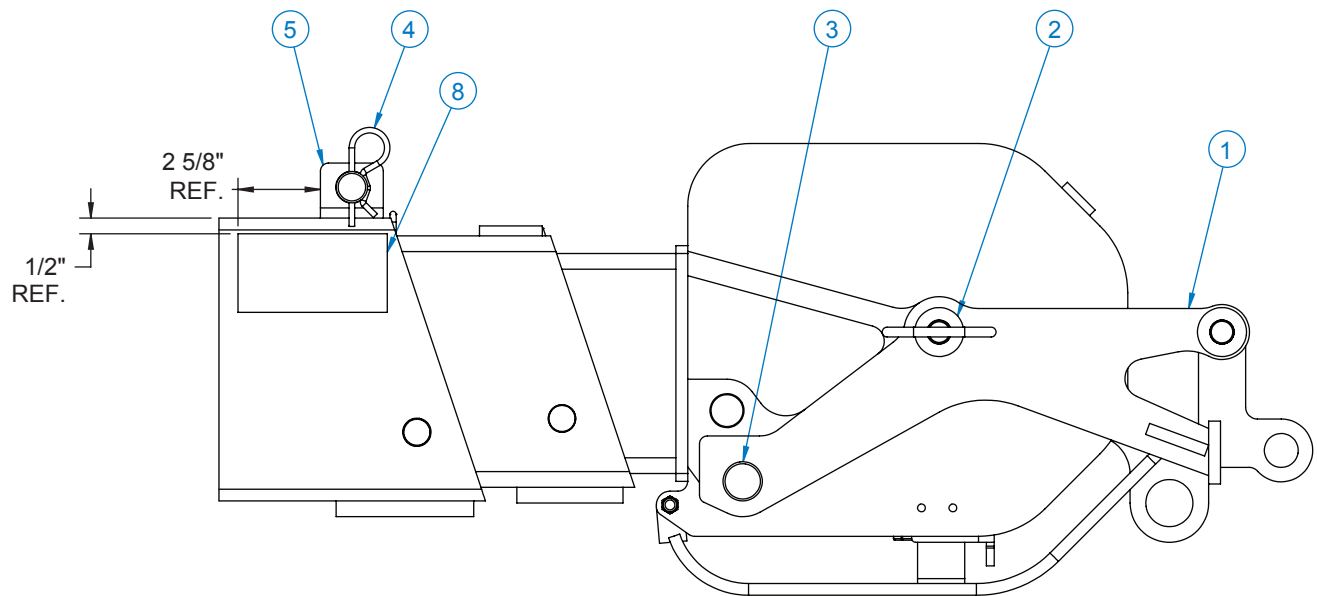


8 Adapter Kit Installation



| ITEM NO. | QTY | PART NO. | DESCRIPTION |
|----------|-----|-----------|--|
| 1 | 1 | 605001163 | WELDMENT, ADAPTER, PERSONNEL BASKET, CROWN, HC-7 THRU HC-9 |
| 2 | 1 | 605001174 | WELDMENT, PIN, SHEAVE, QUICK RELEASE, HC-7 THRU HC-9 |
| 3 | 1 | 605001178 | PIN, ROPE, HEADED, 1.00 DIA, 5.13 LG, W/ THRU HOLE |
| 4 | 3 | 360124000 | PIN HITCH |
| 5 | 1 | 605001171 | WELDMENT, CABLE STOW, 3/8 CABLE |
| 6 | 2 | 460083000 | SCREW SOC HD CTRSNK 5/16-24UNF X 3/4 LG |
| 7 | 1 | 605001505 | DECAL, ANCHOR POINT |
| 8 | 1 | 605001504 | DECAL, LOAD LINE STOW |

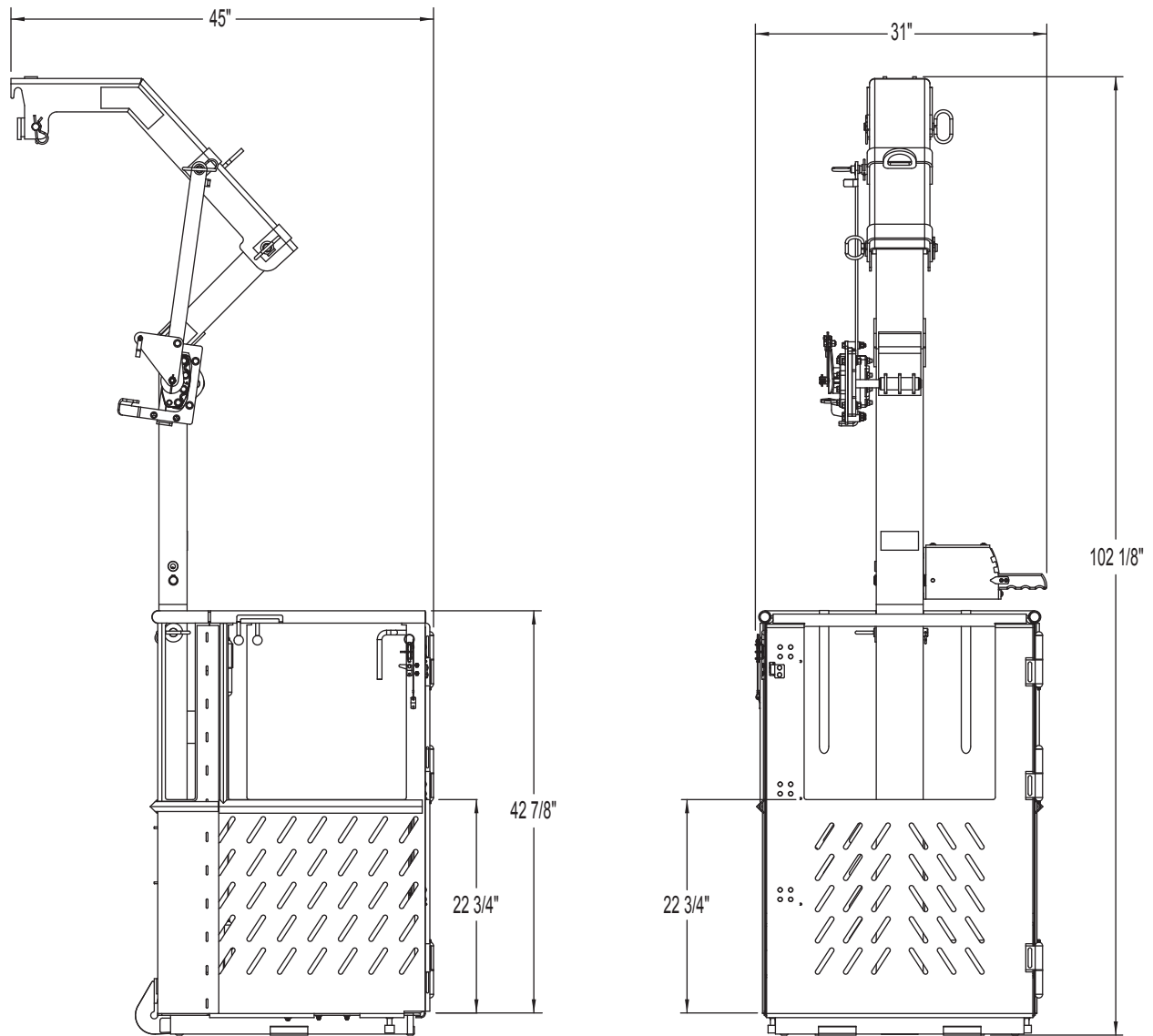
Adapter Kit Installation 8



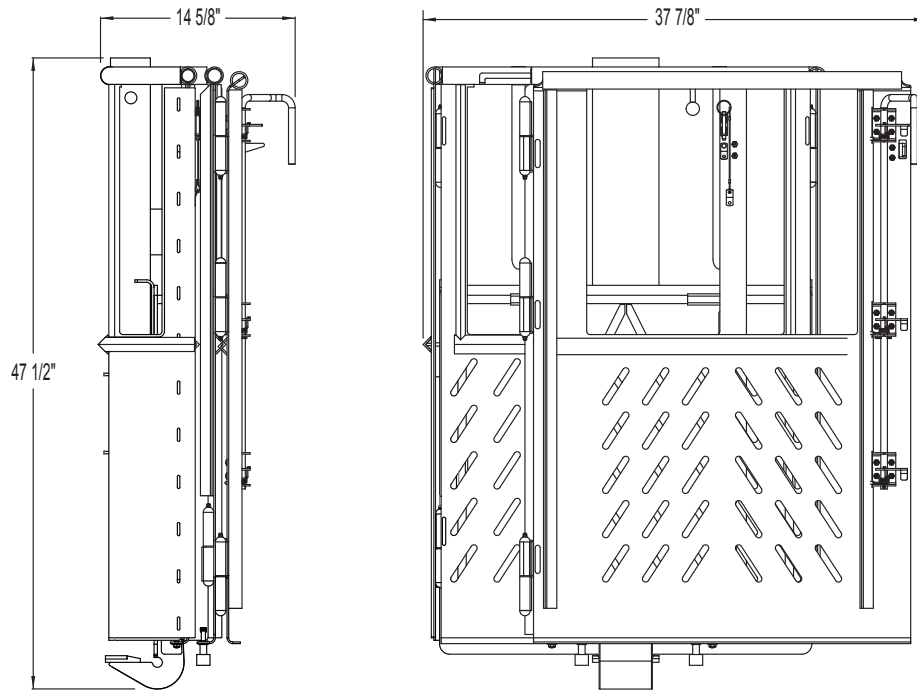
1. To install crown adapter, remove existing sheave bolt and dead end rope pin while holding sheave temporarily in place.
2. Slide adapter (605001163) around crown, as per diagram, and install new pin (605001174) through sheave and secure with hitch pin (360124).
3. Replace rope into crown and install new dead end rope pin (605001178). Install anchor point decal (605001505) next to anchor point per diagram.
4. To install cable stow weldment (605001171), remove existing flat head screws from lower boom cable guard And discard screws. Place cable stow under cable guard and install with new flat had screws (460083000).
5. Once cable stow is in place, install decal as close as possible to cable stow.

9 General Dimensions

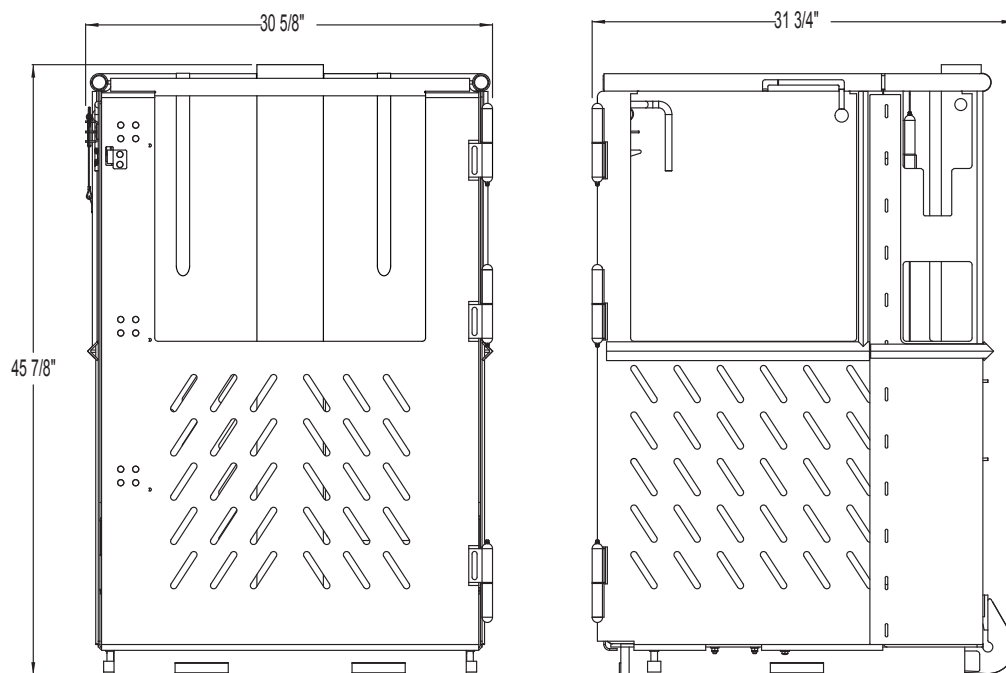
Personnel Basket Assembly



BASKET ASSEMBLY FOLDED

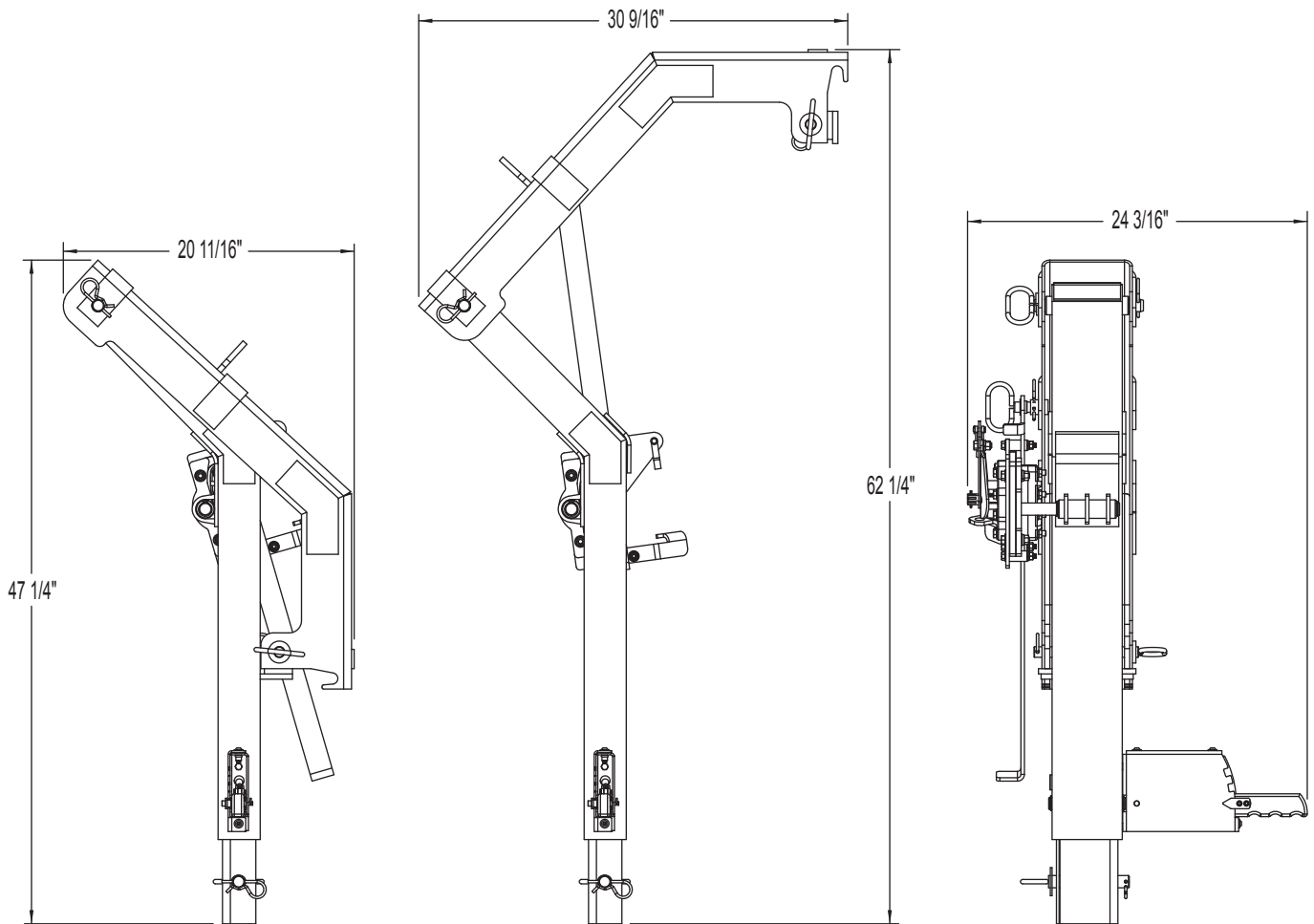


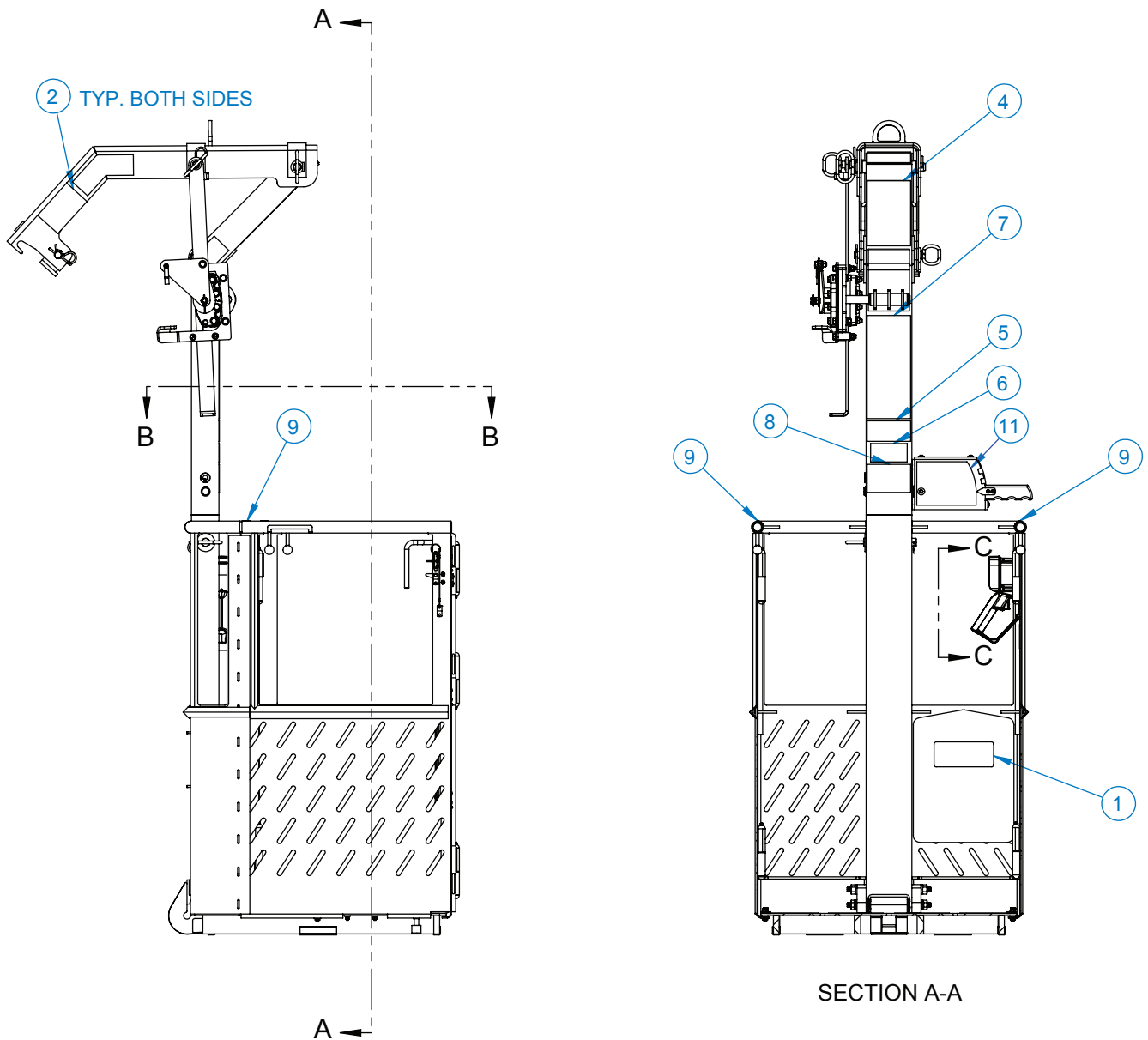
BASKET ASSEMBLY UNFOLDED



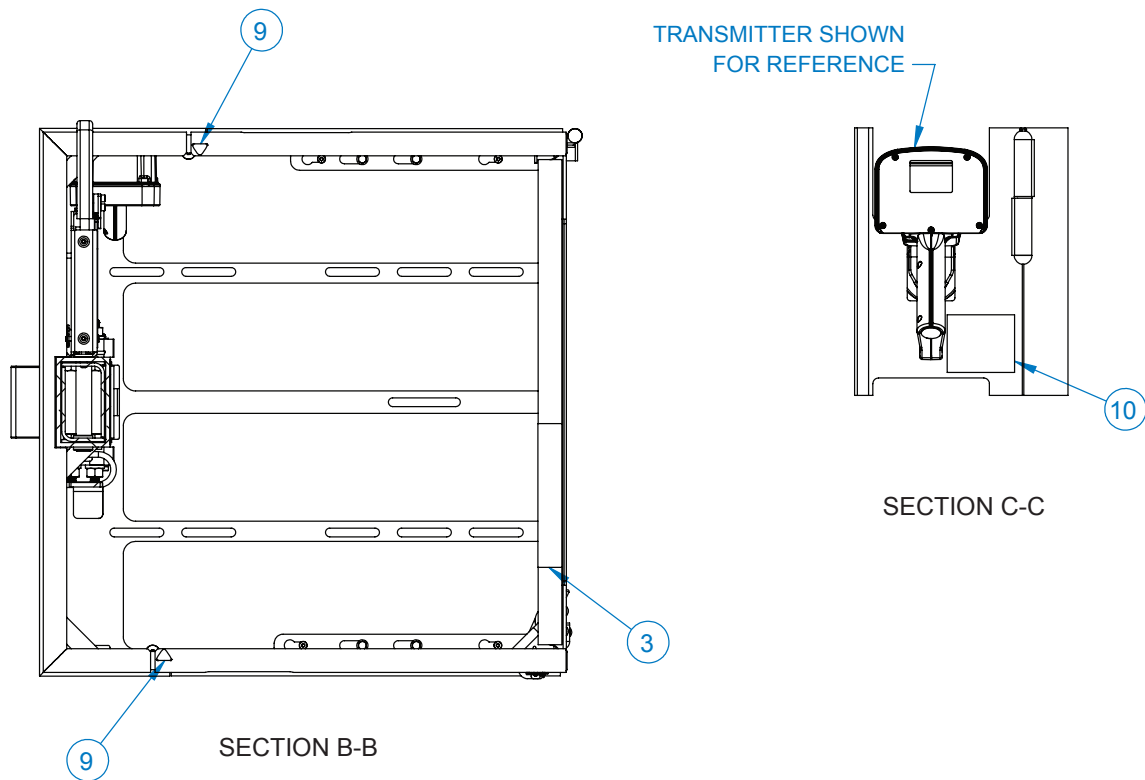
9 General Dimensions

Stalk Assembly

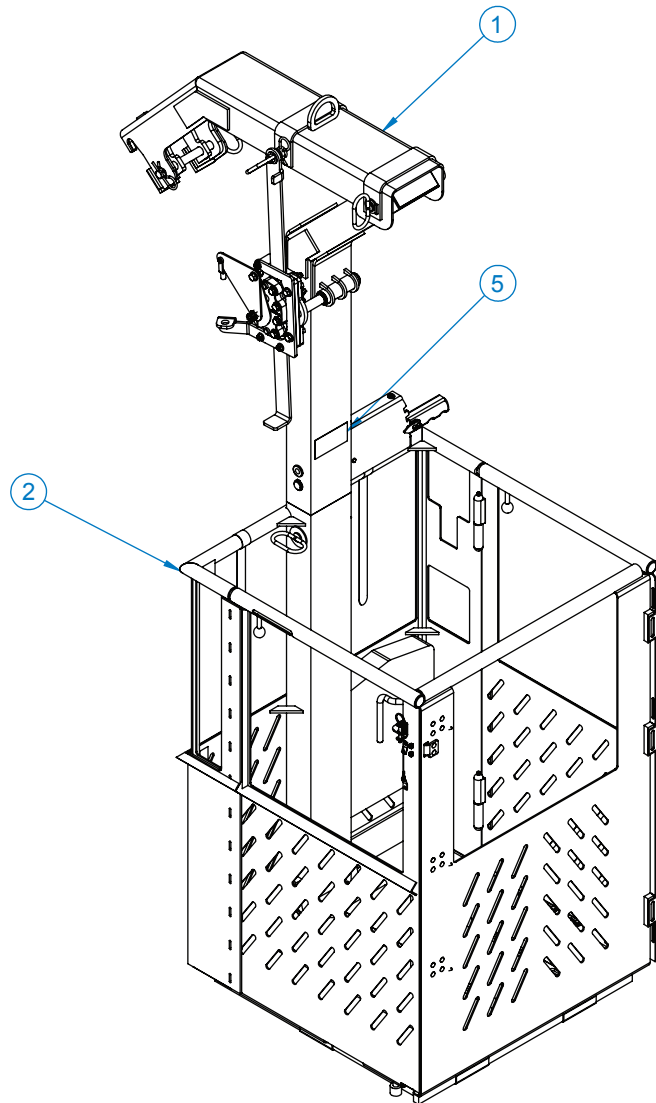




10 Decal Layout P/N: 605001500

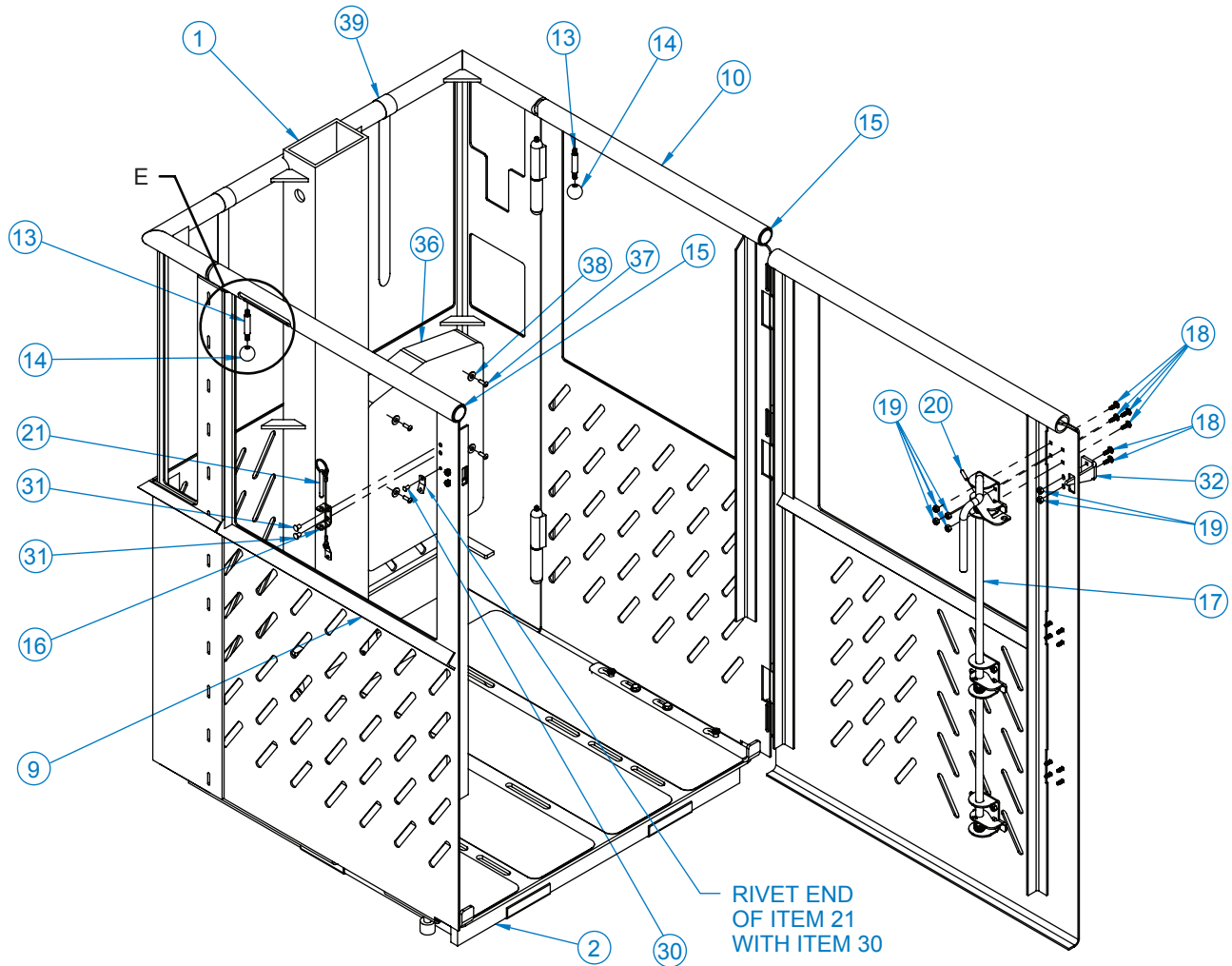


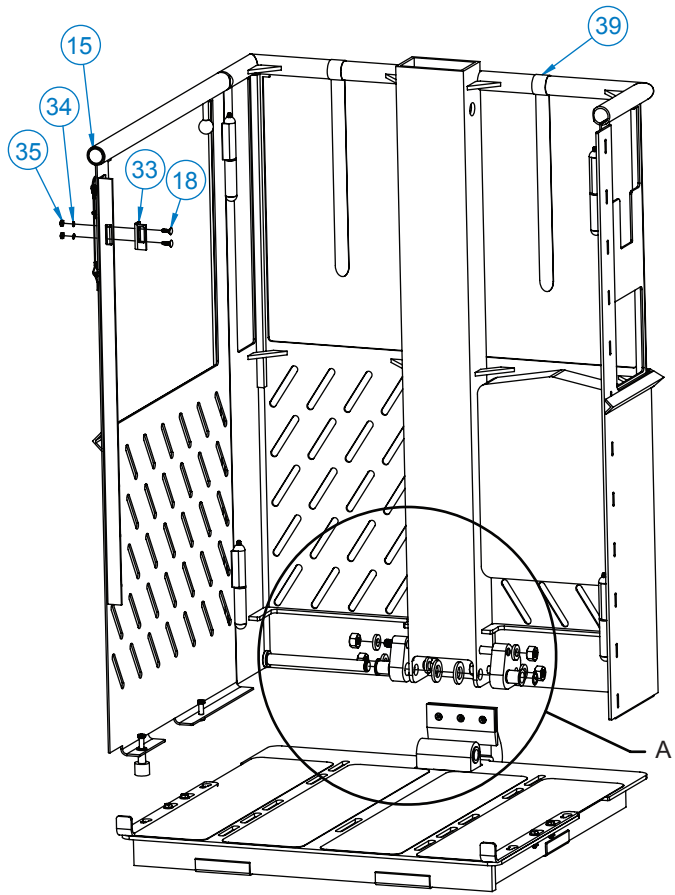
| ITEM NO. | QTY | PART NUMBER | DESCRIPTION |
|----------|-----|-------------|-----------------------------|
| 1 | 1 | 605001501 | DECAL, OWNER'S MANUAL |
| 2 | 2 | 605001502 | DECAL, LOCKING PIN |
| 3 | 1 | 605001503 | DECAL, HARNESS AND DOORS |
| 4 | 1 | 605001506 | DECAL, ELECTROCUTION HAZARD |
| 5 | 1 | 605001507 | DECAL, CAPACITY |
| 6 | 1 | 605001508 | DECAL, NAME PLATE |
| 7 | 1 | 605001510 | DECAL, GENERAL DANGER |
| 8 | 1 | 605001511 | DECAL, LOAD TEST |
| 9 | 2 | 605001512 | DECAL, PINCH POINT |
| 10 | 1 | 605001513 | DECAL, TRANSMITTER STORAGE |
| 11 | 1 | 605001514 | DECAL, BRAKE |



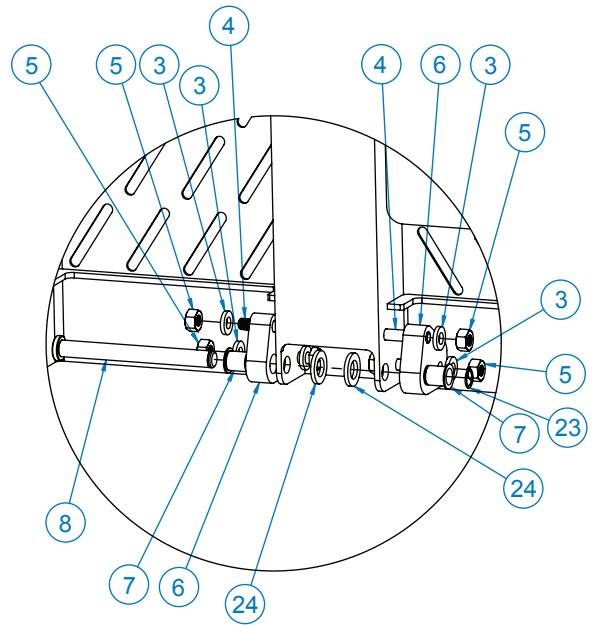
| ITEM NO. | QTY | PART NUMBER | DESCRIPTION |
|----------|-----|-------------|--|
| 1 | 1 | 605001007 | STALK ASSEMBLY, FOLDING, STEEL/ALUM, 350 LBS. CAP. |
| 2 | 1 | 605001009 | PERSONNEL BASKET, FOLDING, ALUM, 350 LBS. CAP. |
| 3 | 1 | 605001500 | KIT, DECAL, PERSONNEL BASKET |
| 4 | 1 | 605001515 | MANUAL, PERSONNEL BASKET, FOLDING, ALUM, 350 LBS. CAP. |
| 5 | 1 | 605001508 | DECAL, NAME PLATE |

12 Folding Alum. Assembly P/N: 605001009



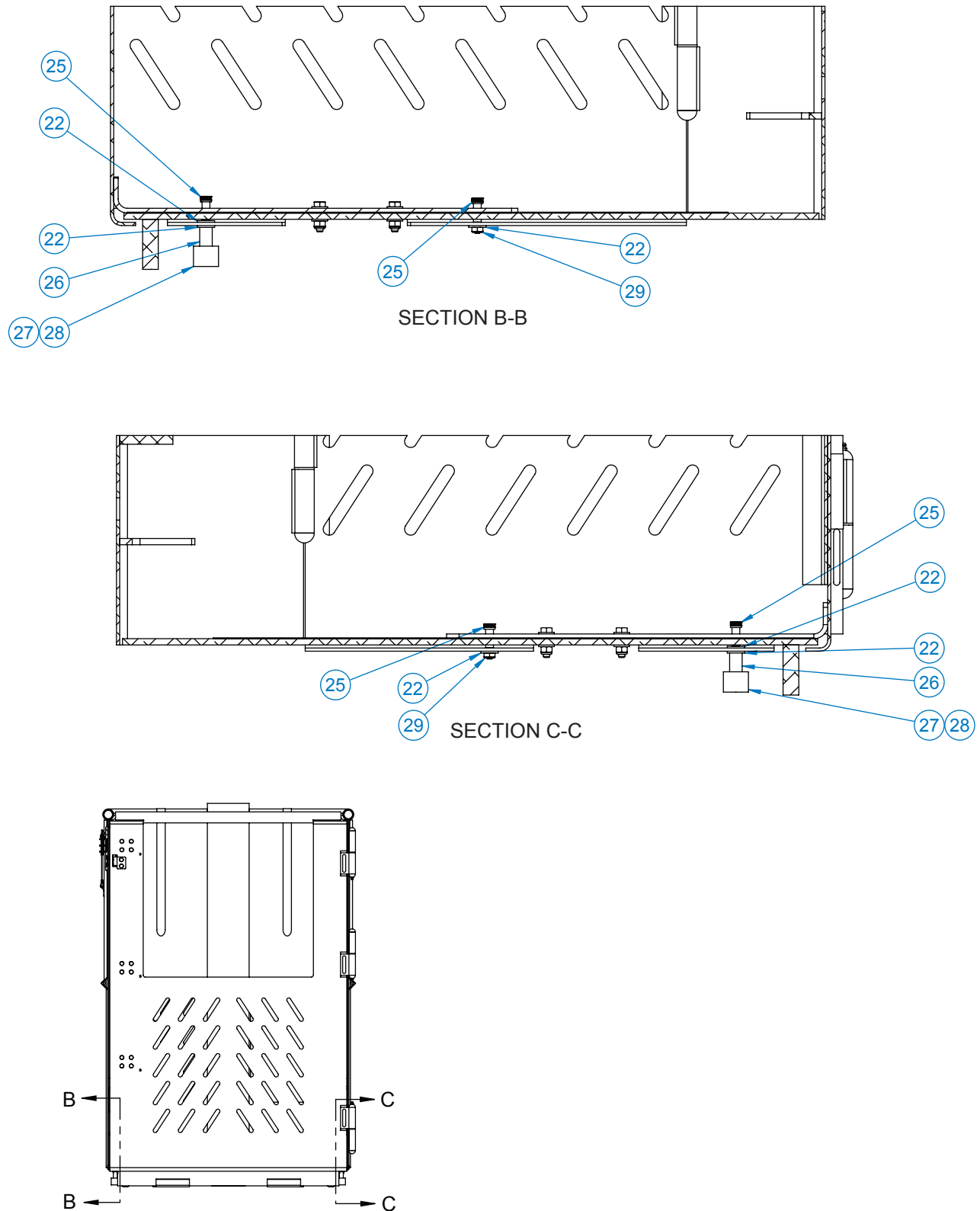


FLOOR HINGE DETAIL
SOME ITEMS REMOVED FOR CLARITY

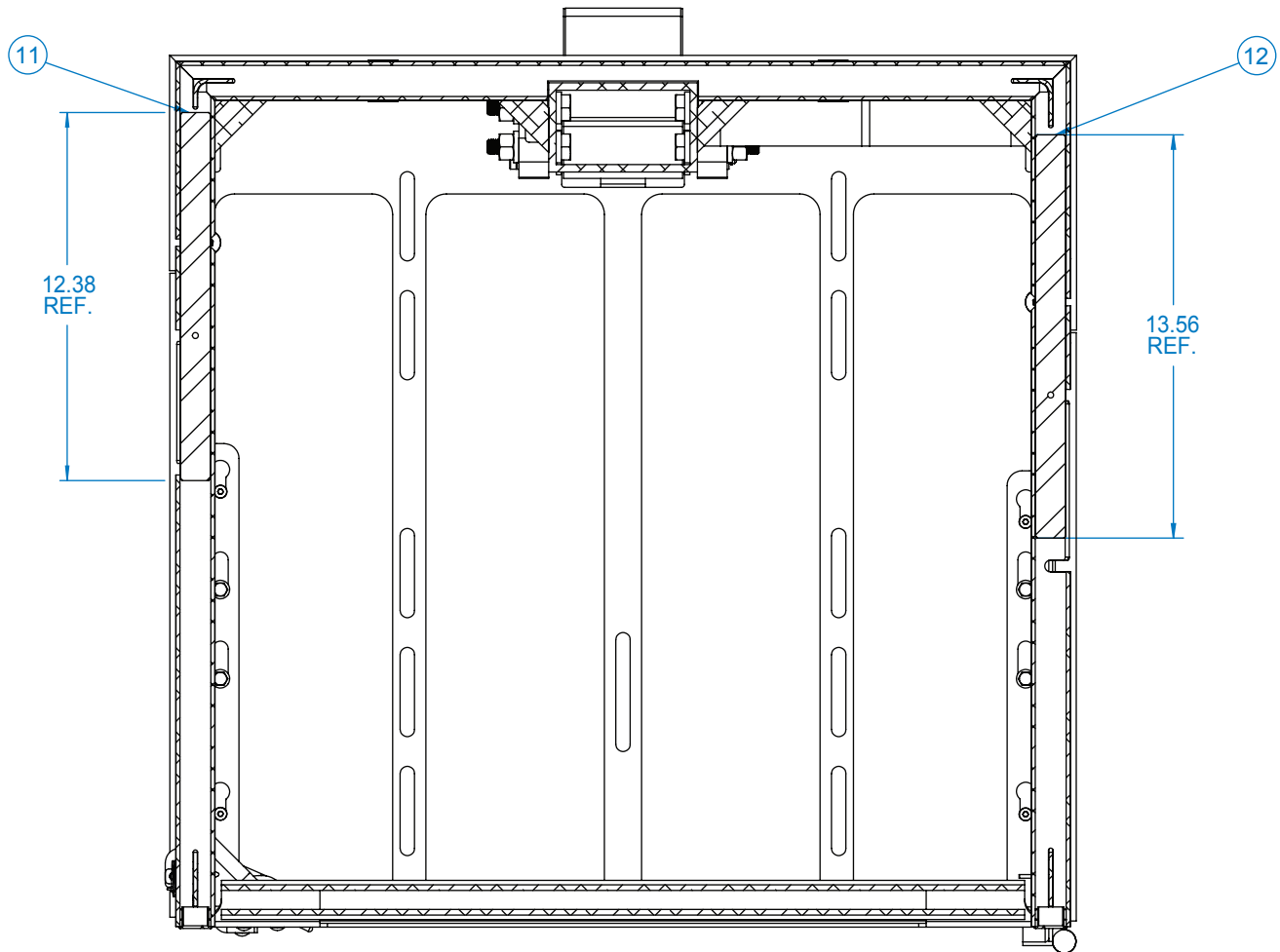


DETAIL A

12 Folding Alum. Assembly P/N: 605001009



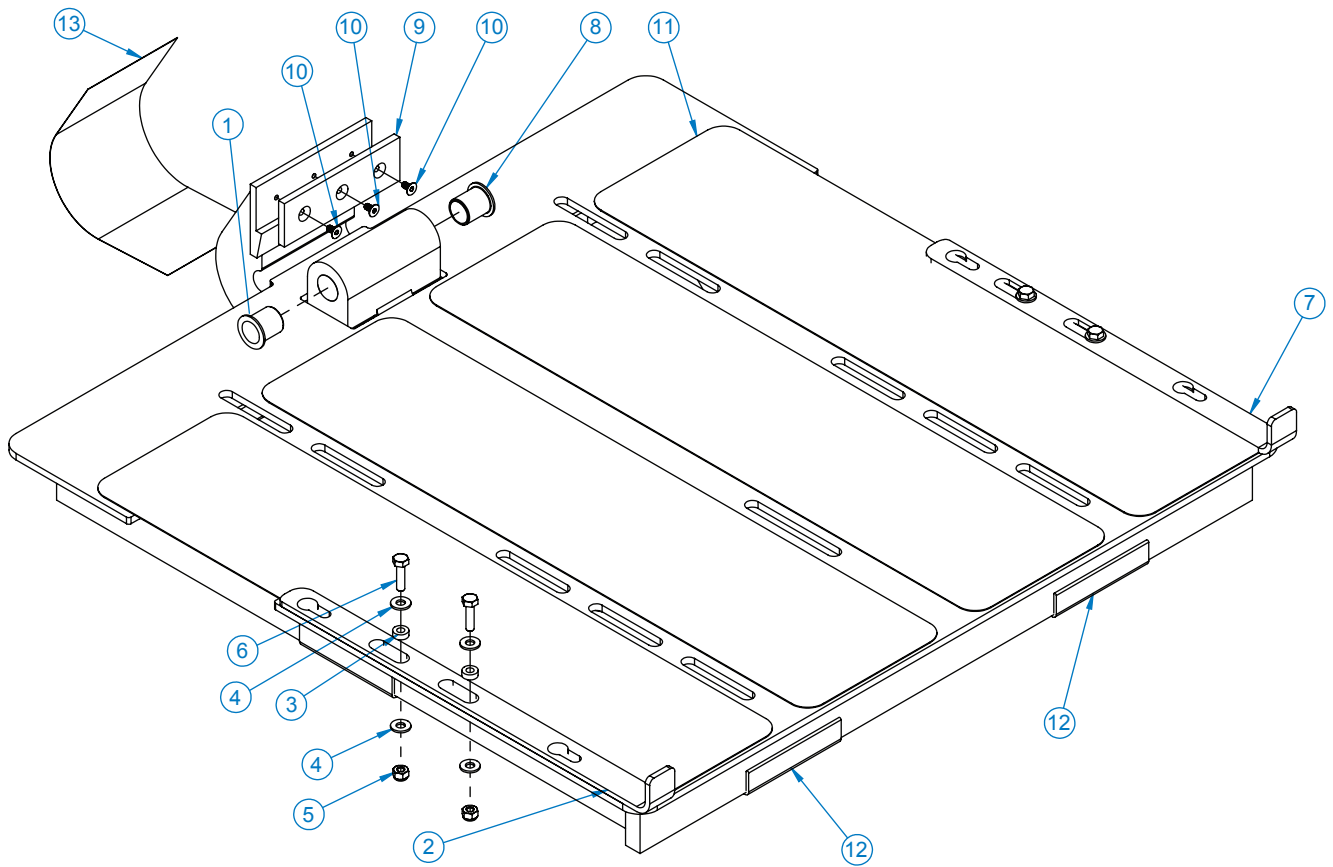
Folding Alum. Assembly P/N: 605001009 12



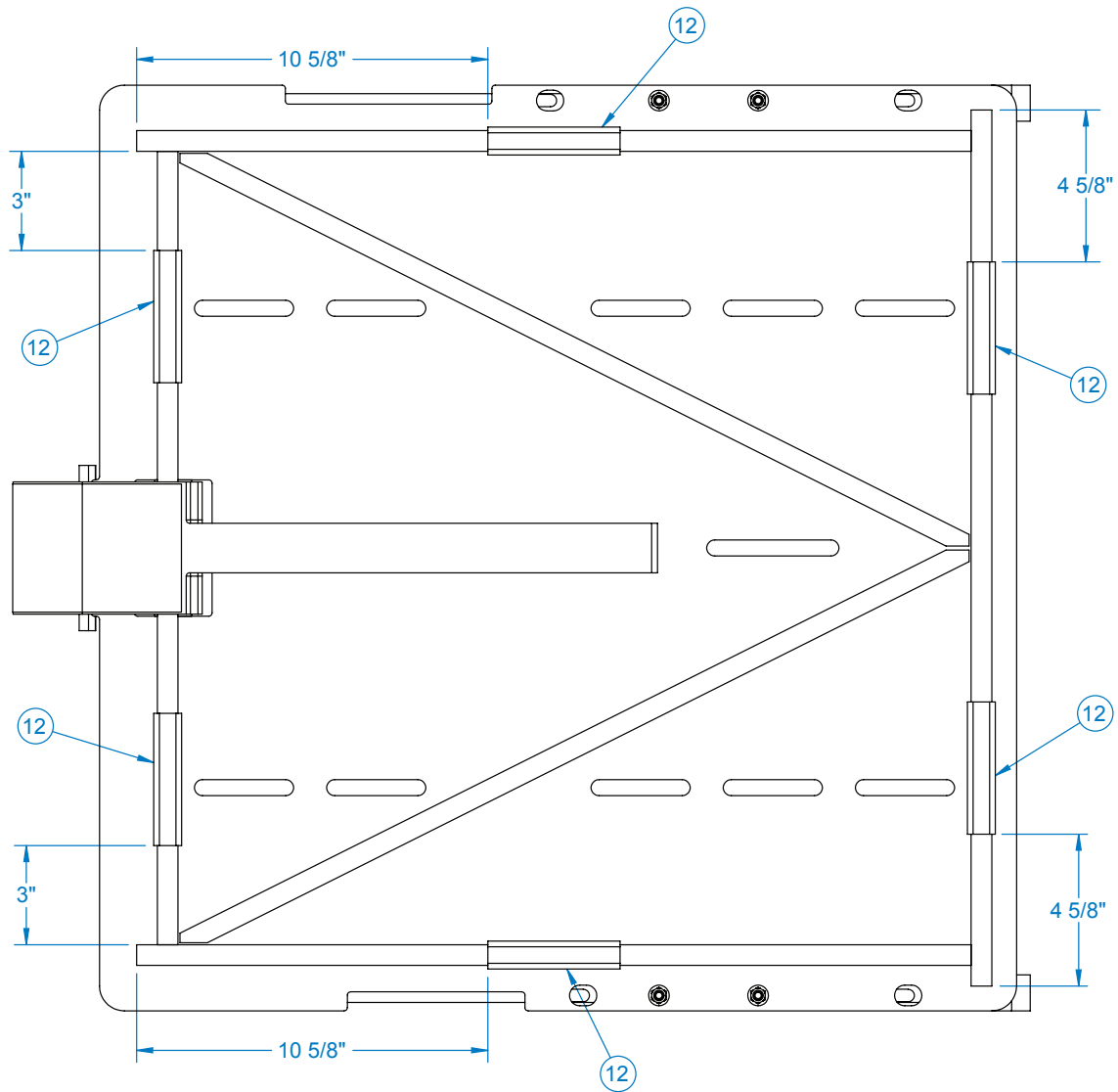
12 Folding Alum. Assembly P/N: 605001009

| ITEM NO. | QTY | PART NO. | DESCRIPTION |
|----------|-----|-----------|---|
| 1 | 1 | 605001010 | WELDMENT, FLOOR AND BACK, FOLDING, ALUM, 350 LBS. CAP. |
| 2 | 1 | 605001008 | FLOOR ASSEMBLY, FOLDING, ALUM, 350 LBS. CAP. |
| 3 | 8 | 605001048 | WASHER, FLAT, 1/2, F436, GALVANIZED |
| 4 | 4 | 605001046 | BOLT, 1/2-13, 2.50 LG, A325, GALVANIZED |
| 5 | 4 | 605001047 | NUT, 1/2-13, A563, GALVANIZED |
| 6 | 2 | 605001043 | HINGE BLOCK, ALUM |
| 7 | 2 | 605001044 | BEARING, 1.125 FLANGE, 1.00 LG, PLASTIC, FOR 0.75 OD SHAFT |
| 8 | 1 | 605001049 | PIN, HEADED, 0.749 OD, 7.625 LG, ZINC PLATED |
| 9 | 1 | 605001026 | WELDMENT, LEFT SIDE, FOLDING, ALUM |
| 10 | 1 | 605001070 | WELDMENT, RIGHT SIDE AND FRONT, FOLDING, ALUM |
| 11 | 1 | 605001038 | PIN, 1.019 OD, 12.38 LG, MOLY-FILLED NYLON |
| 12 | 1 | 605001039 | PIN, 1.019 OD, 13.56 LG, MOLY-FILLED NYLON |
| 13 | 2 | 605001040 | SHAFT, LEVER, 1/4-20 THREADED ENDS, 0.375 DIA, 2.375 OAL, SS |
| 14 | 2 | 605001041 | KNOB, BALL, PP, BLACK, 1/4-20 THREADED INSERT, 1.00 OD |
| 15 | 2 | 605001042 | PLUG, ROUND, SNAP-IN, PLASTIC, BLACK, FOR 0.96-1.07 ID |
| 16 | 1 | 605001034 | BRACKET, PIN, SS |
| 17 | 1 | 605001051 | LATCH ASSEMBLY, SS |
| 18 | 16 | 605001036 | BOLT, CARRIAGE, SQ NECK, 10-24, 0.625 LG, SS |
| 19 | 14 | 605001060 | NUT, NYLON LOCK, 10-24, SS |
| 20 | 3 | 605001058 | CAP, PUSH-ON, EPDM, BLACK, 1.0625 OAL, FOR 5/64 DIA |
| 21 | 1 | 605001033 | PIN, QUICK RELEASE, 0.25 OD, W/ LANYARD, SS |
| 22 | 6 | 605001064 | WASHER, FLAT, 0.69 OD, 0.26 ID, 0.07 THICK, NYLON |
| 23 | 1 | 605001050 | RETAINING RING, EXTERNAL, FOR 0.75 OD, ZINC PLATED |
| 24 | 2 | 605001045 | SPACER, UNTHREADED, 1.50 OD, 0.78 ID, 0.175 THICK, NYLON |
| 25 | 4 | 605001063 | SCREW, 0.75 LG SHOULDER, 0.313 DIA, 1/4-20, 1.41 OAL, SS |
| 26 | 2 | 605001065 | STANDOFF, ROUND, 0.50 OD, 0.75 LG, 1/4-20 FEMALE THREAD, ALUM |
| 27 | 2 | 605001066 | FOOT, 1.00 OD, 0.81 LG, W/ CS HOLE, NYLON, BLACK |
| 28 | 2 | 605001151 | SCREW, FLAT HEAD, 1/4-20, 1.125 LG, ZINC PLATED |
| 29 | 2 | 605001069 | NUT, THIN, NYLON LOCK, 1/4-20, SS |
| 30 | 1 | 605001032 | RIVET, SEMI-TUBULAR, .188 DIA, .375 LG, SS |
| 31 | 2 | 750783000 | RIVET HINGE SS |
| 32 | 1 | 605001059 | RAMP, LATCH, SS |
| 33 | 1 | 605001035 | BRACKET, LATCH RAMP |
| 34 | 2 | 605001037 | WASHER, LOCK, SPLIT, #10, SS |
| 35 | 2 | 750074000 | NUT #10 NC STAINLESS |
| 36 | 1 | 605001095 | HOLDER, DOCUMENT, PLASTIC |
| 37 | 4 | 754028000 | RIVET POP 3/16 DIA X 1/4 - 3/8 GRIP SS |
| 38 | 4 | 020400000 | WASHER FL SAE 1/4 |
| 39 | 1 | 605001181 | STRAP, HOOK AND LOOP, 18 IN X 1 IN, MARINE GRADE |

Floor Assembly P/N: 605001008 13

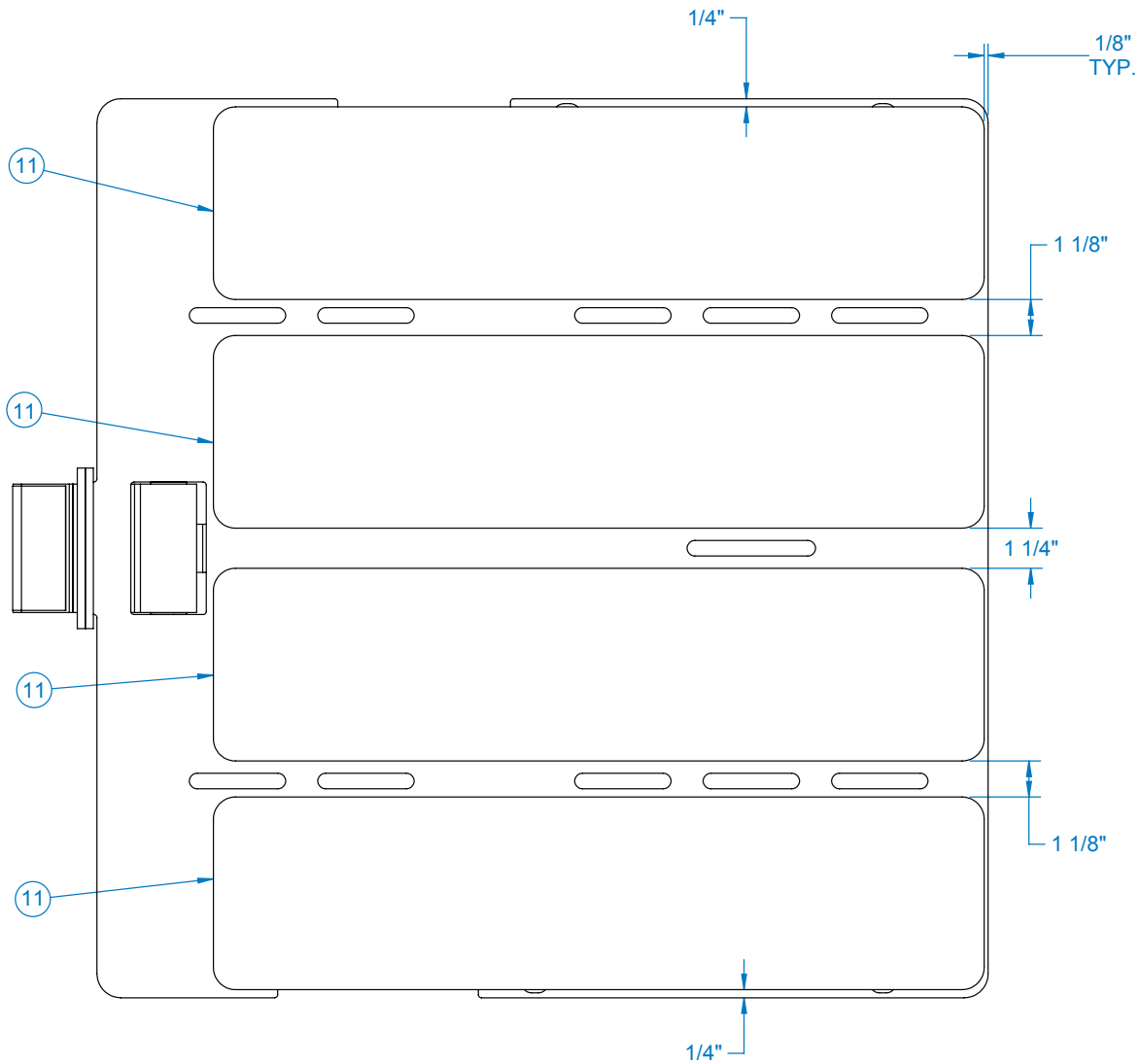


13 Floor Assembly P/N: 605001008



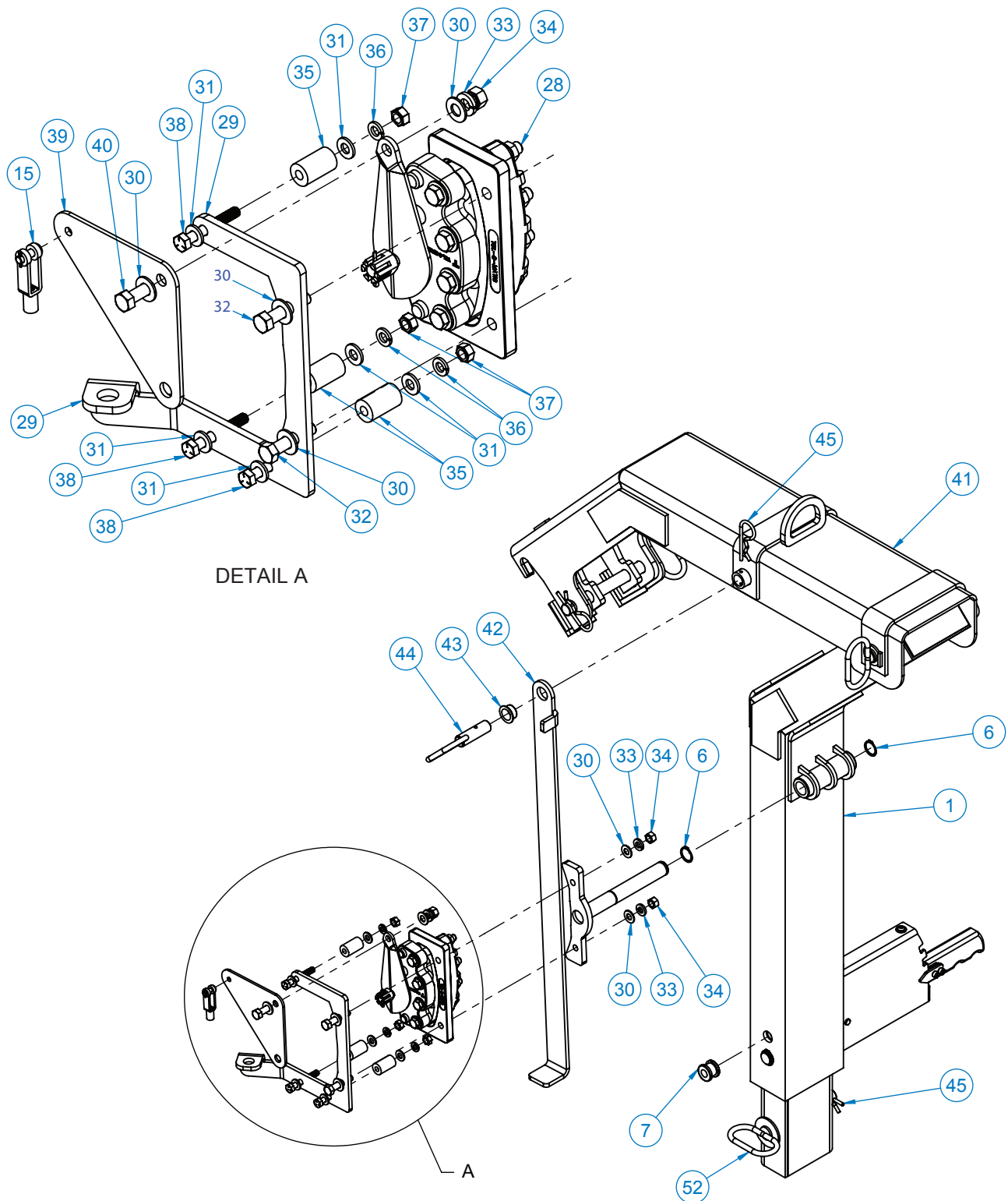
EDGE TRIM DETAIL
LOCATIONS APPROXIMATE

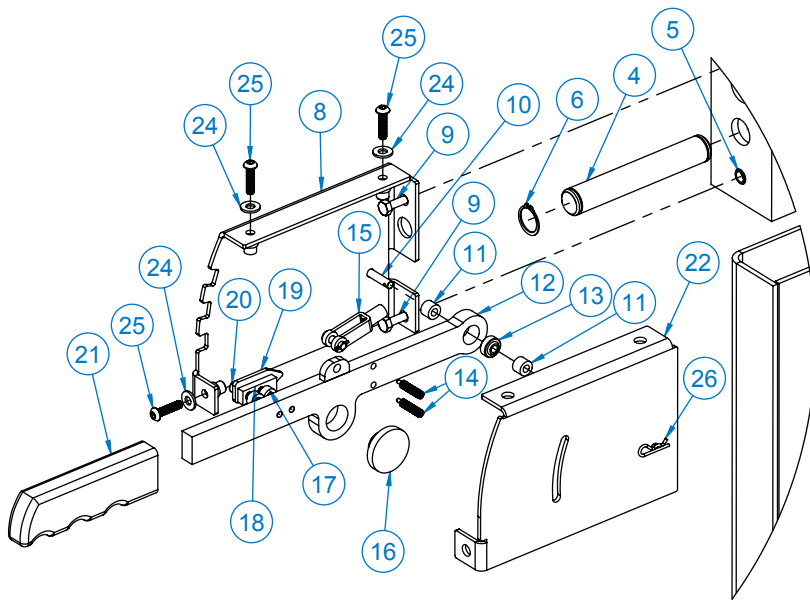
Floor Assembly P/N: 605001008 13



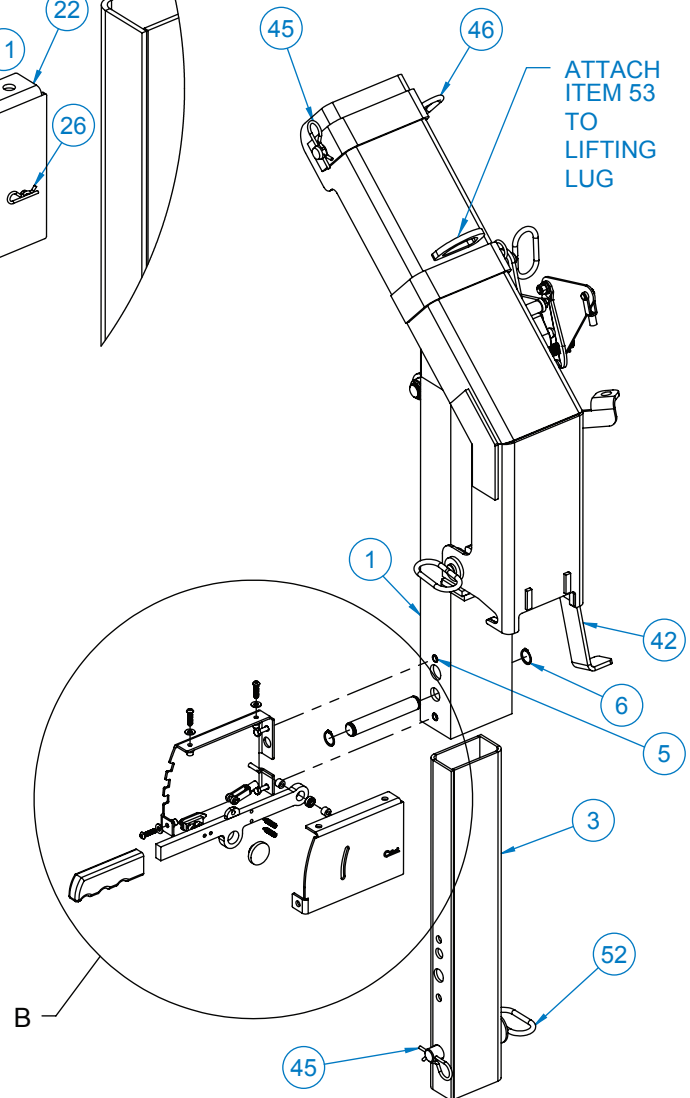
| ITEM NO. | QTY | PART NUMBER | DESCRIPTION |
|----------|-----|-------------|---|
| 1 | 1 | 605001083 | WELDMENT, FLOOR ASSEMBLY, FOLDING, ALUM, 350 LBS. CAP. |
| 2 | 1 | 605001061 | LOCKING BAR, SS, 16.143 LG, W/CUTOUTS |
| 3 | 4 | 605001068 | SPACER, UNTHREADED, 0.50 OD, .188 LG, FOR 0.25 SCREW, NYLON |
| 4 | 8 | 020400000 | WASHER FL SAE 1/4 |
| 5 | 4 | 016300000 | NUT HX NYLK 1/4-20 UNC |
| 6 | 4 | 005604000 | SCREW HX HD 1/4-20 UNC X 1 LG |
| 7 | 1 | 605001062 | LOCKING BAR, SS, 15.228 LG, W/CUTOUTS |
| 8 | 2 | 605001044 | BEARING, 1.125 FLANGE, 1.00 LG, PLASTIC, FOR 0.75 OD SHAFT |
| 9 | 1 | 605001091 | WEAR PAD, CAM |
| 10 | 3 | 605001092 | SCREW, FLAT HEAD, 10-24, 3/8 LG, SS |
| 11 | 4 | 766141000 | DECAL, SAFETY SURFACE |
| 12 | 24" | 605001093 | EDGE TRIM, 0.625 GRIP |
| 13 | 1 | 605001094 | ROCK GUARD, 3.875 X 10.00 |

14 Stalk Assembly P/N: 605001007

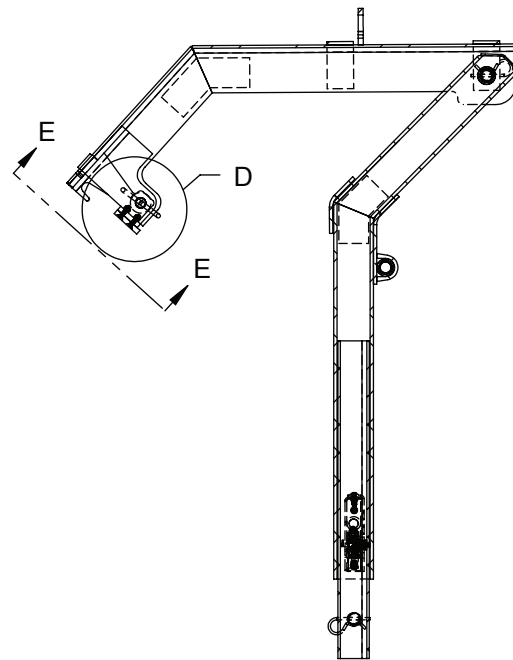
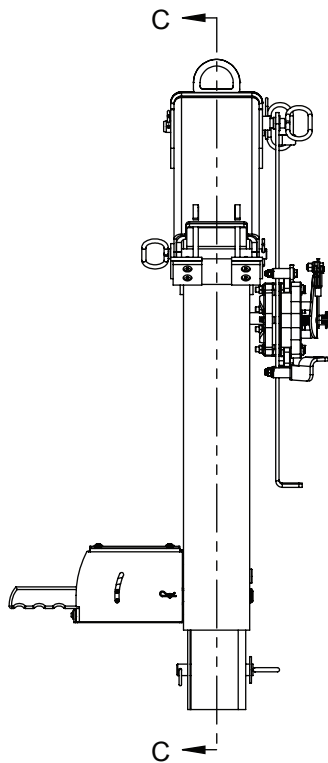




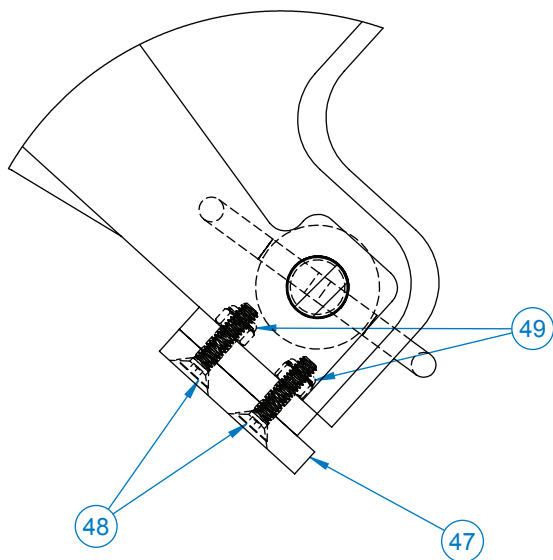
DETAIL B



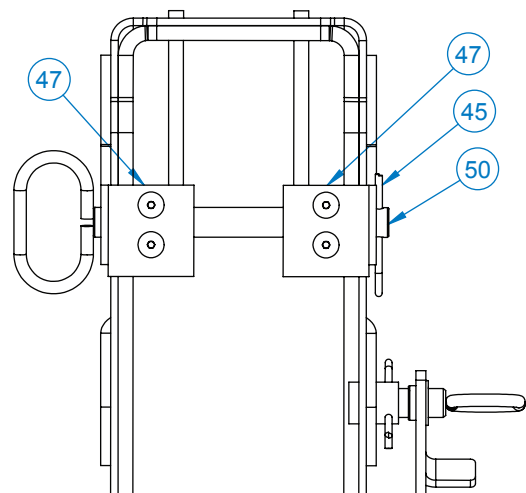
14 Stalk Assembly P/N: 605001007



SECTION C-C

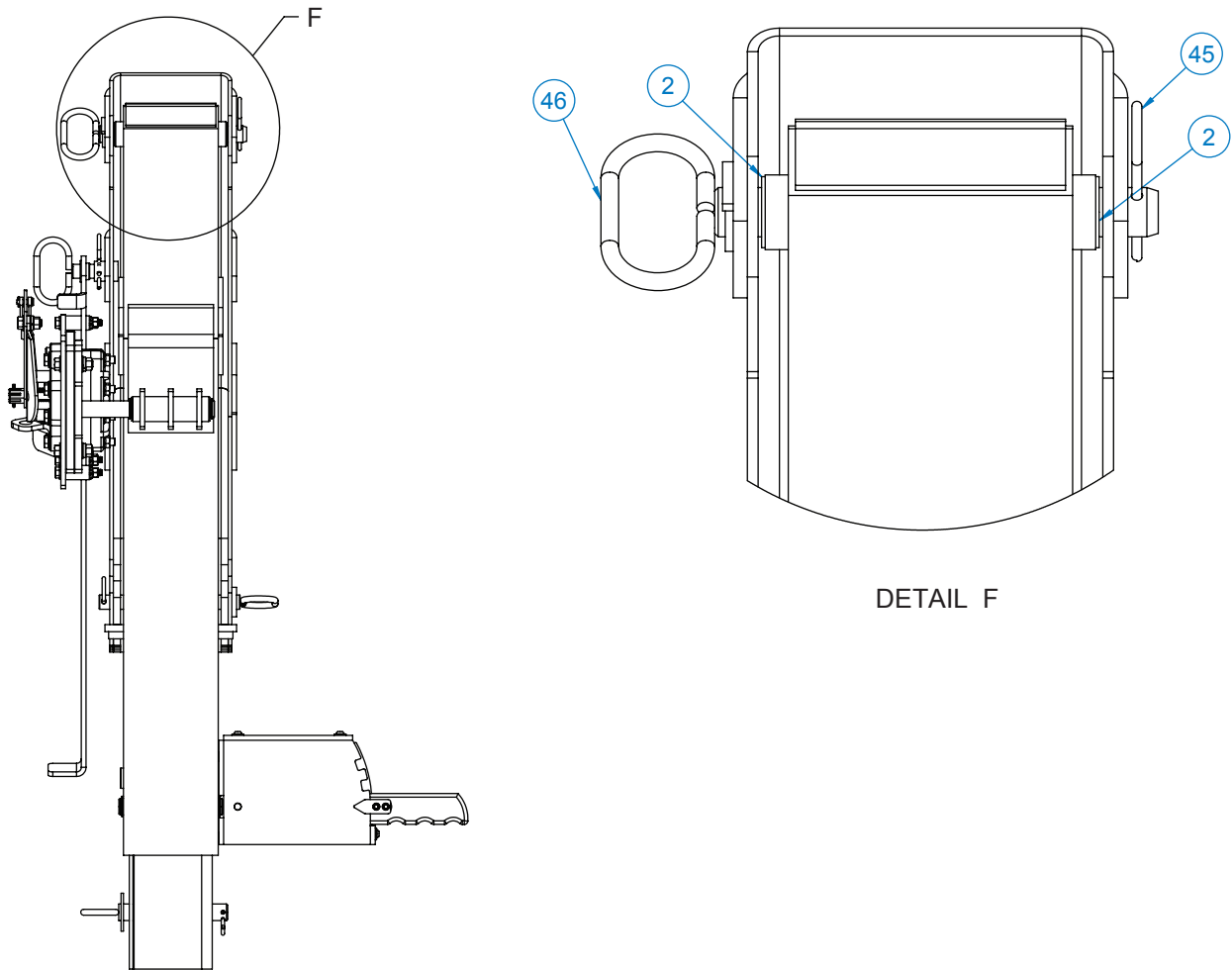


DETAIL D



SECTION E-E

Stalk Assembly P/N: 605001007 14

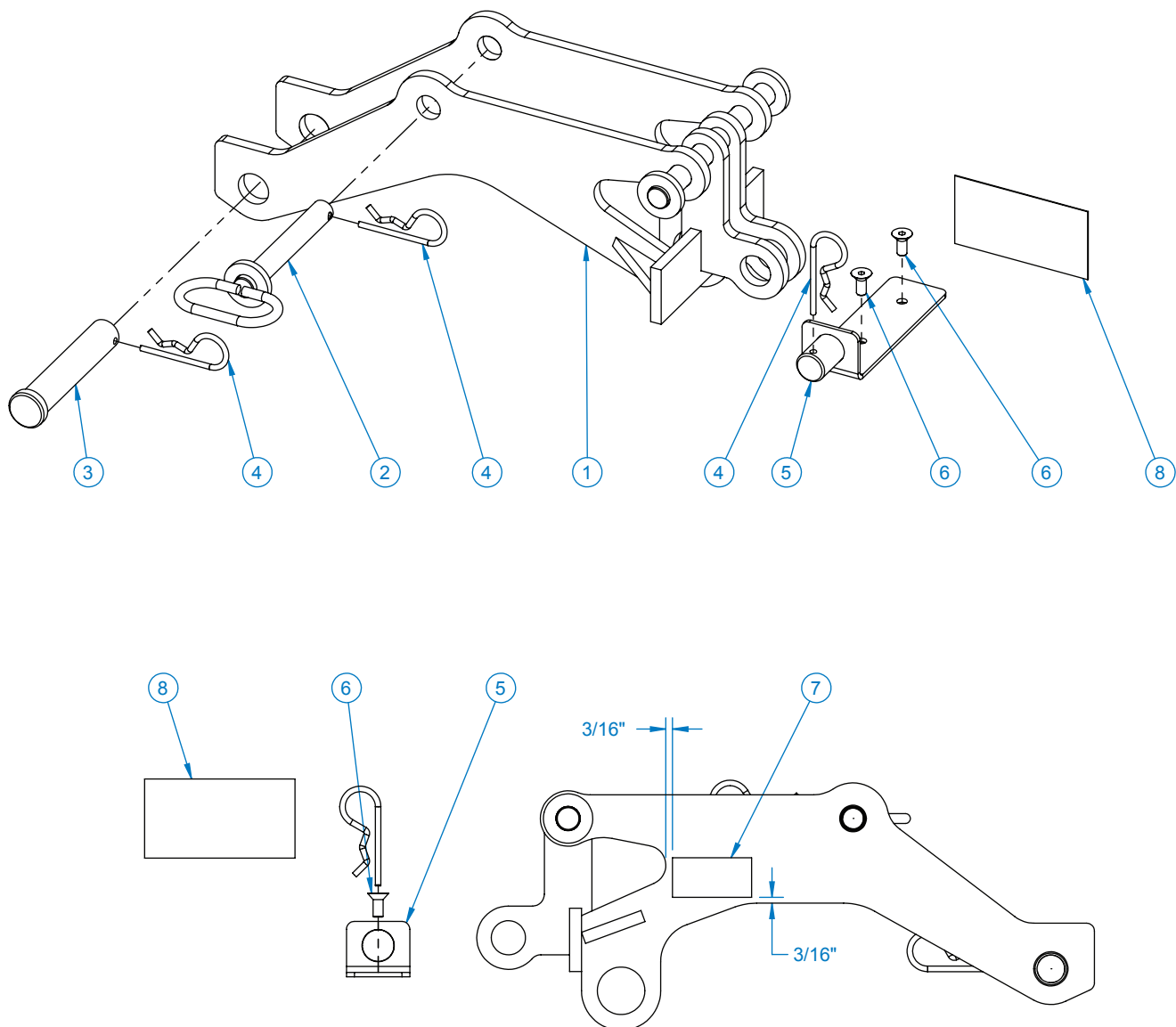


| ITEM NO. | QTY | PART NUMBER | DESCRIPTION |
|----------|-----|-------------|--|
| 1 | 1 | 605001096 | WELDMENT, STALK, ALUM, 350 LBS. CAP. |
| 2 | 4 | 605001109 | BEARING, 1.25 FLANGE, 1.50 LG, PLASTIC, FOR 0.875 OD SHAFT |
| 3 | 1 | 605001106 | WELDMENT, SLEEVE, STALK, ALUM, 350 LBS. CAP. |
| 4 | 1 | 605001123 | PIN, 0.874 OD, 5.48 LG, MACHINED |
| 5 | 2 | 736276000 | NUTSERT 1/4 NC X .165-.260 GRIP |
| 6 | 4 | 605001112 | RETAINING RING, EXTERNAL, FOR 0.875 OD, ZINC PLATED |
| 7 | 1 | 772027000 | GROMMET, RUBBER, 1/2" ID, 1/2" THICK PLATE |

14 Stalk Assembly P/N: 605001007

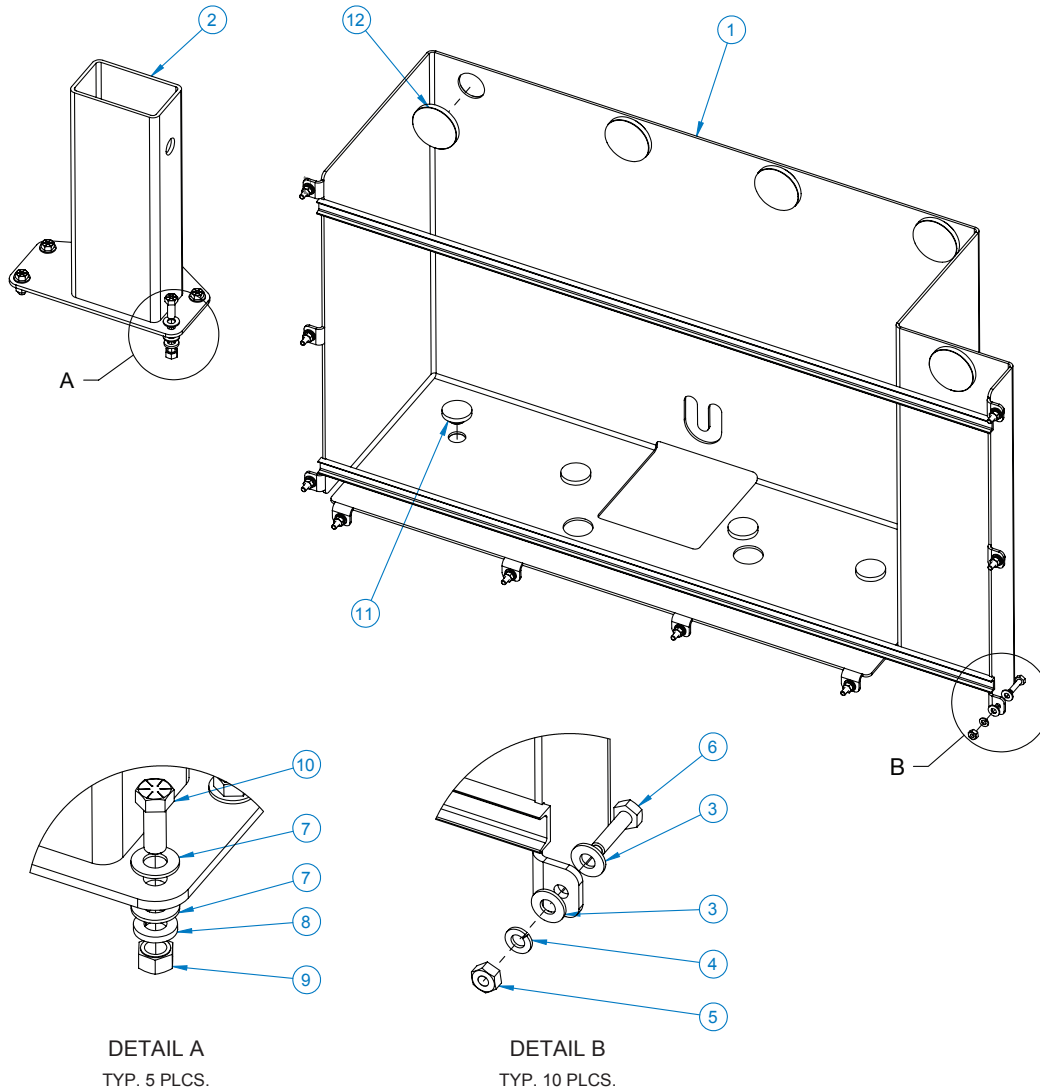
| ITEM NO. | QTY | PART NO. | DESCRIPTION |
|----------|-----|-----------|--|
| 8 | 1 | 605001124 | PLATE, COVER, FRONT, BRAKE |
| 9 | 2 | 005500000 | SCREW HX HD 1/4-20 UNC X 3/4 LG |
| 10 | 1 | 605001132 | PIN, CLEVIS, 0.25 DIA, 0.38 HEAD DIA, 1.563 USABLE LG, 1.75 OAL, SS |
| 11 | 2 | 605001131 | SPACER, UNTHREADED, 0.50 OD, 0.252 ID, 0.38 LG, NYLON |
| 12 | 1 | 605001126 | WELDMENT, LEVER, BRAKE |
| 13 | 1 | 605001130 | BEARING, SPHERICAL, 0.66 OD, 0.25 ID, 0.38 WIDE, NYLON |
| 14 | 2 | 605001129 | PLUNGER, SPRING, SS, LONG NOSE, HIGHTORQUE, 1/4-20, 1-4 LBS. NOSE FORCE, 1.19 LG |
| 15 | 2 | 605001119 | CLEVIS, STEEL, 0.25 PIN, 1/4-28, ZINC PLATED, 2.25 LG |
| 16 | 1 | 360767000 | PAD BOOM 1.5 O.D. |
| 17 | 2 | 605001134 | SPACER, UNTHREADED, 0.50 OD, 0.252 ID, 0.25 LG, NYLON |
| 18 | 1 | 605001135 | BAR, 0.50 WIDE, 0.25 THICK, 1.375 LG, W/ HOLES |
| 19 | 1 | 605001136 | INDICATOR, BRAKE, STEEL, W/ CUTOUTS |
| 20 | 2 | 005611000 | SCREW SOC HD 1/4 UNC X 1 ZP GR8 |
| 21 | 1 | 605001137 | HANDGRIP, W/ HOLES |
| 22 | 1 | 605001125 | PLATE, COVER, REAR, BRAKE |
| 23 | 3 | 736272000 | NUTSERT 1/4-20 UNC X .027-.165 GRIP |
| 24 | 3 | 020400000 | WASHER FL SAE 1/4 |
| 25 | 3 | 605001133 | SCREW, BUTTON HD, HEX SKT, 1/4-20, 1.00 LG, ZINC PLATED |
| 26 | 1 | 560093001 | HAIR PIN .080 DIA X 1 3/16 LG |
| 27 | 1 | 605001114 | WELDMENT, PIVOT, BRAKE CALIPER |
| 28 | 1 | 605001111 | CALIPER, DISC BRAKE, W/ FLOATING BRACKET |
| 29 | 1 | 605001117 | BRACKET, CABLE, BRAKE CALIPER |
| 30 | 6 | 021200000 | WASHER FL 3/8 |
| 31 | 6 | 020901000 | WASHER FL 5/16 |
| 32 | 2 | 460113000 | SCREW HX HD 3/8-16 UNC X 1-3/4 LG GR8 |
| 33 | 3 | 021100000 | WASHER SP LK 3/8 |
| 34 | 3 | 330372000 | NUT HX 3/8 NC GR5 |
| 35 | 3 | 605001120 | SPACER, UNTHREADED, 0.75 OD, 0.315 ID, 1.25 LG, NYLON |
| 36 | 3 | 020600000 | WASHER 5/16 LOCK SS |
| 37 | 3 | 016500000 | NUT HX 5/16-18UNC |
| 38 | 3 | 605001121 | SCREW, HX HD, 5/16-18, 2.25 LG, GR 5, ZINC PLATED |
| 39 | 1 | 605001118 | LEVER, BRAKE CALIPER, W/ HOLES |
| 40 | 1 | 008701000 | SCW HX 3/8 UNC X 1 GR5 |
| 41 | 1 | 605001139 | WELDMENT, STALK, STEEL, 350 LBS. CAP. |
| 42 | 1 | 605001113 | BAR, BRAKE, SS, W/ HOLE |
| 43 | 1 | 605001110 | BEARING, 1.125 FLANGE, 0.50 LG, PLASTIC, FOR 0.75 OD SHAFT |
| 44 | 1 | 605001157 | WELDMENT, PIN, BRAKE BAR |
| 45 | 4 | 360124000 | PIN HITCH |
| 46 | 1 | 605001152 | WELDMENT, PIN, PIVOT, STALK |
| 47 | 2 | 605001150 | WEAR PAD, STOP PLATE, W/ HOLES |
| 48 | 4 | 605001151 | SCREW, FLAT HEAD, 1/4-20, 1.125 LG, ZINC PLATED |
| 49 | 4 | 016300000 | NUT HX NYLK 1/4-20 UNC |
| 50 | 1 | 605001155 | WELDMENT, PIN, ADAPTER LOCK |
| 51 | 1 | 605001122 | BRAKE CABLE |
| 52 | 1 | 605001159 | WELDMENT, PIN, STALK, REMOVABLE |
| 53 | 1 | 605001006 | LANYARD, PERSONNEL BASKET, SS |

15 Crown Adapter Kit P/N: 605001179



| ITEM NO. | QTY | PART NUMBER | DESCRIPTION |
|----------|-----|-------------|--|
| 1 | 1 | 605001163 | WELDMENT, ADAPTER, PERSONNEL BASKET, CROWN, HC-7 THRU HC-9 |
| 2 | 1 | 605001174 | WELDMENT, PIN, SHEAVE, QUICK RELEASE, HC-7 THRU HC-9 |
| 3 | 1 | 605001178 | PIN, ROPE, HEADED, 1.00 DIA, 5.13 LG, W/ THRU HOLE |
| 4 | 3 | 360124000 | PIN HITCH |
| 5 | 1 | 605001171 | WELDMENT, CABLE STOW, 3/8 CABLE |
| 6 | 2 | 460083000 | SCREW SOC HD CTRSNK 5/16-24 UNF X 3/4 LG |
| 7 | 1 | 605001505 | DECAL, ANCHOR POINT |
| 8 | 1 | 605001504 | DECAL, LOAD LINE STOW |

Storage Kit P/N: 605001180 16



| ITEM NO. | QTY | PART NUMBER | DESCRIPTION |
|----------|-----|-------------|---|
| 1 | 1 | 605001001 | WELDMENT, FOLDING PERSONNEL BASKET STORAGE, VERTICAL, BOLT-ON |
| 2 | 1 | 605001005 | WELDMENT, STALK STORAGE |
| 3 | 20 | 020400000 | WASHER FL SAE 1/4 |
| 4 | 10 | 020200000 | WASHER SP LK 1/4 |
| 5 | 10 | 015900000 | NUT HX 1/4-20 UNC SS |
| 6 | 10 | 005604000 | SCREW HX HD 1/4-20 UNC X 1 LG |
| 7 | 10 | 021200000 | WASHER FL 3/8 |
| 8 | 5 | 021100000 | WASHER SP LK 3/8 |
| 9 | 5 | 330372000 | NUT HX 3/8 NC GR5 |
| 10 | 5 | 330371000 | SCREW HX HD 3/8-16 UNC X 1 LG GR8 |
| 11 | 4 | 360767000 | PAD BOOM 1.5 O.D. |
| 12 | 5 | 407203000 | PAD, BOOM, 2.50 O.D. x .563 THK |
| 13 | 2 | 725039000 | STRAP HOLD DOWN OXY/ACET |



P.O. Box 580697 Phone: (918) 438-2760
4707 N. Mingo Rd. Tulsa, OK 74158-0697

LIMITED WARRANTY 2 YEAR PARTS AND LABOR

Auto Crane will warranty to the consumer for a period of (2) years parts and labor from the date of purchase. Each new Auto Crane product sold will be free, under normal use and service, from defects in material and workmanship. Date of purchase will be honored as the date indicated on the Bill of Sale, which must accompany the Warranty Registration and be on file with Auto Crane. Absent a valid Warranty Registration and appropriate documentation, the original date of manufacture, as indicated by the serial number on the product, will be used to determine the effective date of the 2 year warranty.

The obligation of Auto Crane under this warranty is limited to the replacement or repair of parts that appear to the manufacturer after review and/or inspection to be defective and paid flat rate labor for replacing defective parts. This warranty does not obligate Auto Crane to bear the travel time charges in connection with the replacement or repair of defective parts. Responsibility for customer's claims arising from misapplication, abuse, misuse or alteration of equipment or parts lies with the distributor or user and no warranty obligation is assumed under these circumstances by Auto Crane.

Auto Crane will in no event be liable for any consequential damages or contingent liabilities arising out of the failure of any Auto Crane Product or parts to operate properly.

Auto Crane makes no warranty in respect to component accessories, it being subject to the warranties of their respective manufacturers.

If field service, at the request of the distributor, is rendered and fault is found not to be with Auto Crane's product, the distributor shall pay the time and expense of the field representative.

Claims for service labor or other expenses that have incurred by the buyer without approval or authorization from Auto Crane will not be accepted.

When applying for warranty, claims may be handled by contacting your nearest authorized Auto Crane Distributor. All claims are to be filed in writing on an Auto Crane Warranty Claim Form.

AUTO CRANE COMPANY IS UNDER NO OBLIGATION TO EXTEND THIS WARRANTY TO ANY CUSTOMER FOR WHICH AN AUTO CRANE DELIVERY REPORT FORM HAS NOT BEEN COMPLETED AND IS ON FILE WITH AUTO CRANE.

MANDATORY APPENDIX I
PERSONNEL LIFT PLATFORM PLANNING AND AUTHORIZATION FORM

1. Location: _____ Date: ____ / ____ / ____

2. Purpose of lift: _____

3. Hoisting eqpt. mfg: _____ Model#: _____ Serial#: _____

4. Expected radius: _____ (maximum): _____ (at work location)

5. (A) Rated load at radius: _____ (B) Maximum lift load: _____ [50% of 5(A)]

6. Platform ID: _____ Platform rating: _____

7. Platform weight: _____ Type: (Pin On) _____ (Suspended) _____

8. (A) Number of platform occupants: _____ (B) Approx. wt. (With equip): _____

9. Total lift weight: _____ [7 + 8(B)] [No more than 5(B) above]

10. Personnel lift supervisor: _____

11. What are the alternatives to this personnel lift? _____

12. Why are they not being used? _____

13. Pre-lift briefing held: _____ AM/PM

Attendees: _____

14. Anticipated hazards (wind, weather, visibility, power lines): _____

15. Lift accomplished date: _____ Time: _____

16. Remarks: _____

Personnel Lift Authorizer Signature / Date

MANDATORY APPENDIX II PERSONNEL LIFT PLATFORM PRE-LIFT INSPECTION

Inspector: _____ Date: ____ / ____ / ____

Platform ID: _____

Frequent Inspection

| Markings | Sat | Unsat |
|------------------------------------|-------|-------|
| Platform (all information legible) | _____ | _____ |
| Suspension system | _____ | _____ |

Structure

| | | |
|--|-------|-------|
| Load-supporting welds/bolts | _____ | _____ |
| Load-supporting members | _____ | _____ |
| Barrier from toeboard to intermediate rail | _____ | _____ |
| Handrail | _____ | _____ |
| Fall protection device anchorage points | _____ | _____ |
| Gate-locking mechanisms | _____ | _____ |
| Platform flooring | _____ | _____ |
| Suspension attachment points | _____ | _____ |

Attachment Mechanisms

| | | |
|------------------------------------|-------|-------|
| Pins/ears/bolt-ups/eyes (circle) | _____ | _____ |
| Wire rope/chain/rigid leg (circle) | _____ | _____ |
| Master links | _____ | _____ |

Periodic Inspection

| | | |
|------------------------|-------|-------|
| Greasing hinges | _____ | _____ |
| Proper Brake operation | _____ | _____ |

General comments: _____

Lift Director Signature

